

# DOWNHILLS PARK



<b>Section</b>	<b>Heading</b>	<b>Page number</b>
	<b>Forward</b>	4
	<b>Purpose of the management plan</b>	5
<b>1.0</b>	<b>Setting the Scene</b>	
1.1	Haringey in a nutshell	7
1.2	The demographics of Haringey	7
1.3	Deprivation	8
1.4	Open space provision in Haringey	8
1.5	Draft Open space vision in Haringey	8
<b>2.0</b>	<b>About Downhills Park</b>	
2.1	Site location and description	10
2.2	Facilities	11
2.3	Trees	16
<b>3.0</b>	<b>A welcoming place</b>	
3.1	Visiting Downhills park	17
3.2	Entrances	18
3.3	Access for all	18
3.4	Signage	18
3.5	Toilet facilities and refreshments	19
3.6	Events	19
<b>4.0</b>	<b>A clean and well-maintained park</b>	
4.1	Operational and management responsibility for parks	21
4.2	Current maintenance by Parks Operations	22
4.3	Asset management and management of projects in parks	23
4.4	Scheduled maintenance	25
4.5	Setting and measuring service standards	28
4.6	Monitoring the condition of equipment and physical assets	30
4.7	Tree maintenance programme	30
4.8	Graffiti	30
4.9	Maintenance of buildings, equipment and landscape	30
4.10	Hygiene	31
<b>5.0</b>	<b>Healthy, safe and secure place to visit</b>	
5.1	Smoking	32
5.2	Alcohol	32
5.3	Walking	32
5.4	Health and safety	32
5.5	Reporting issues with the Love Clean Streets app	33
5.6	Community safety in parks	34
5.7	Extending Neighbourhood Watch into parks	34
5.8	Designing out crime	34
5.9	24 hour access	34
5.10	Dogs and dog control orders	34
<b>6.0</b>	<b>Sustainability</b>	
6.1	Greenest borough strategy	36
6.2	Pesticide use	36
6.3	Sustainable use of materials	36
6.4	Recycling	37
6.5	Pollution reduction	37
6.6	Water efficiency	37
<b>7.0</b>	<b>Community involvement</b>	
7.1	Volunteering in parks	38
7.2	Haringey Friends of Parks Forum	39
7.3	Friends of Downhills Park	39
7.4	Other community involvement	40
<b>8.0</b>	<b>Conservation and heritage</b>	

<b>Section</b>	<b>Heading</b>	<b>Page number</b>
8.1	Biodiversity and the Biodiversity Action Plan	40
8.2	Habitat representation and nature conservation interests	40
8.3	Designation status	41
8.4	Conservation Action Plan	41
8.5	Site history and heritage	46
<b>9.0</b>	<b>Marketing and communications</b>	
9.1	The marketing approach	49
9.2	Websites	49
9.3	Social media	49
9.4	Publications	49
9.5	Noticeboards	50
9.6	Campaigns	50
9.7	Awards	50
9.8	Tree and bench sponsorship	51
9.9	Consultation and market research	51
<b>10</b>	<b>Management of the park</b>	
10.1	Setting the financial scene	52
10.2	Management structure	53
10.3	Borough Plan 2019-2023	53
10.4	Parks and Open Spaces Strategy	54
10.5	The Greenest Borough Strategy	54
10.6	The Health & Wellbeing Strategy	55
10.7	Finance and funding	55
<b>11</b>	<b>Improving Downhills Park</b>	
11.1	Future improvements	57
<b>12</b>	<b>Action Plan</b>	
	Action Plan 2019-2022	59

## Foreword

Dear residents and park users,

I am pleased to share with you the management plan for Downhills Park. This plan has been developed by Haringey Council, in partnership with the Friends of Downhills Park, stakeholders in and around the park and with input from your local ward councillors.

Residents have told us that our parks and green spaces are one of the things they love the most about Haringey, and as a council, we agree. We are proud of our green spaces and are committed to doing all we can to make our parks the very best they can be.

Most of Haringey's district and local parks have been nationally recognised through the Green Flag Award scheme, and we continue to work with Friends groups to maintain and improve our parks for our community and visitors alike. In a recent resident survey 80% of people told us they were satisfied with parks and greenspaces in the borough.

It is no secret that Haringey – like all local authorities – has been affected by austerity, but we continue to work hard to fund and maintain our parks, as well as bringing in external investment to provide a much-needed boost.

Green spaces in Haringey play so many different roles - from a retreat from the busy city, or a place for sport and play, to sites for nature conservation and world-renowned events. Each management plan seeks to balance the many competing demands for each park to allow our community to enjoy the park their way.

This management plan looks to show how the council is meeting and addressing the criteria of the Green Flag Award scheme and sets out the priorities for action and improvement of the park over the coming years.

I hope you find this document useful and I would encourage you to make the most of your local park. If you want to get more involved in the future management of the park why not consider joining a friends group, attending an event or simply just send us some of your thoughts?

Thank you,



Cllr Kirsten Hearn  
Cabinet Member for Climate Change and Sustainability

## Open space vision in Haringey

Our vision is that by 2023 Haringey's parks and green spaces will be places where:

- Residents' lives are being improved by access to quality green space.
- Communities take an active role in the decisions about the future of parks and green spaces.
- Civic pride and community ownership of parks are encouraged, through a diverse range of volunteering opportunities.
- A diverse range of events is offered, providing a backdrop for communities to celebrate together and enhance the borough's cultural offer.
- Wildlife flourishes and habitats are maintained, expanded and connected.
- Spaces are protected and future-proofed for the next generation.
- Funding for parks is sustainable and at no cost to the Council.

The strategy is in development and will be subject to consultation with a range of partners and stakeholders before the Council is asked to formally adopt it during 2020-21. More details are set out in sections 10.4 and 10.5.

## **Purpose of the Management Plan**

This management plan details and guides the management, maintenance, development and improvement of Paignton Park now and over the next three years.

In developing this management plan, we particularly want to stress the importance we place on our commitment to involve the whole community in shaping the future of Paignton Park. This is because we recognise that open space affects the lives of almost everyone who lives and works near the park. We believe that the combination of effective management and community involvement of all our open spaces offers considerable potential for helping to make Haringey a thriving and more cohesive community.

This management plan should be treated as a living and evolving document. It is open to review and adaption in an ever-changing environment.

This document is the primary location where all those with a connection to Paignton Park - council staff and members, Friends and community groups, partners and residents - should be confident that everything about Paignton Park can be found and is set out here.

It also tells a little of the history of the park, how it is today and describes the plans and aspirations and how these are to be achieved.

## Setting the scene

### 1.1 Haringey in a nutshell

Haringey is one of 33 London boroughs, and is located to the north of the capital covering 11 square miles (28km<sup>2</sup>) in total. The borough population in 2020 is estimated to be 289,000 which is 15% more than ten years ago.



Overall Haringey is the seventh most deprived borough in London (out of 32). However, the borough has extreme contrasts. Areas such as the high hilly communities of Highgate, Muswell Hill and Crouch End in the west are some of the most prosperous locations to live in London, while some wards in the east are classified as being amongst the more deprived in the country.

### 1.2 The demographics of Haringey

The population is very diverse and very youthful. Around a quarter of the borough population is aged 0-19 and only a tenth of residents are over 65. Nearly two fifths of the borough population are from black, Asian or minority ethnic (BAME) groups and 26% identify as “white other”.

Downhills Park is in West Green ward. The population density in West Green ward is over 10,504 residents per km<sup>2</sup> (compared to an average of 10,264 in Haringey and 8,697 in London). This highlights the importance of access to parks and open spaces in the neighbourhood.

The Haringey website has detailed information about the population of the borough and individual wards within the borough. This can be found at <http://www.haringey.gov.uk/local-democracy/about-council/state-of-the-borough>

### 1.3 Open space provision in Haringey

Haringey Council manages most of the public open space within the borough, except for Alexandra Park, Highgate Woods and Tottenham Marshes.

Although much greener than some other London boroughs, Haringey is deficient in all types of open space, including public parks.

In 2014 just over a fifth (21.8%) of the area of West Green ward (in which Downhills Park is located) was described as “amenity open space”. This is below the average open space across Haringey (28%) and London (39%).

This fact underlines the importance of providing and maintaining sites like Downhills Park.



**Image 1:** This bench is flanked by metal sculptures of local heroes: Olympic gold medallist Nicola Adams; first black Spurs footballer and Tottenham war hero Walter Tull, and the ‘father of meteorology’ Luke Howard.



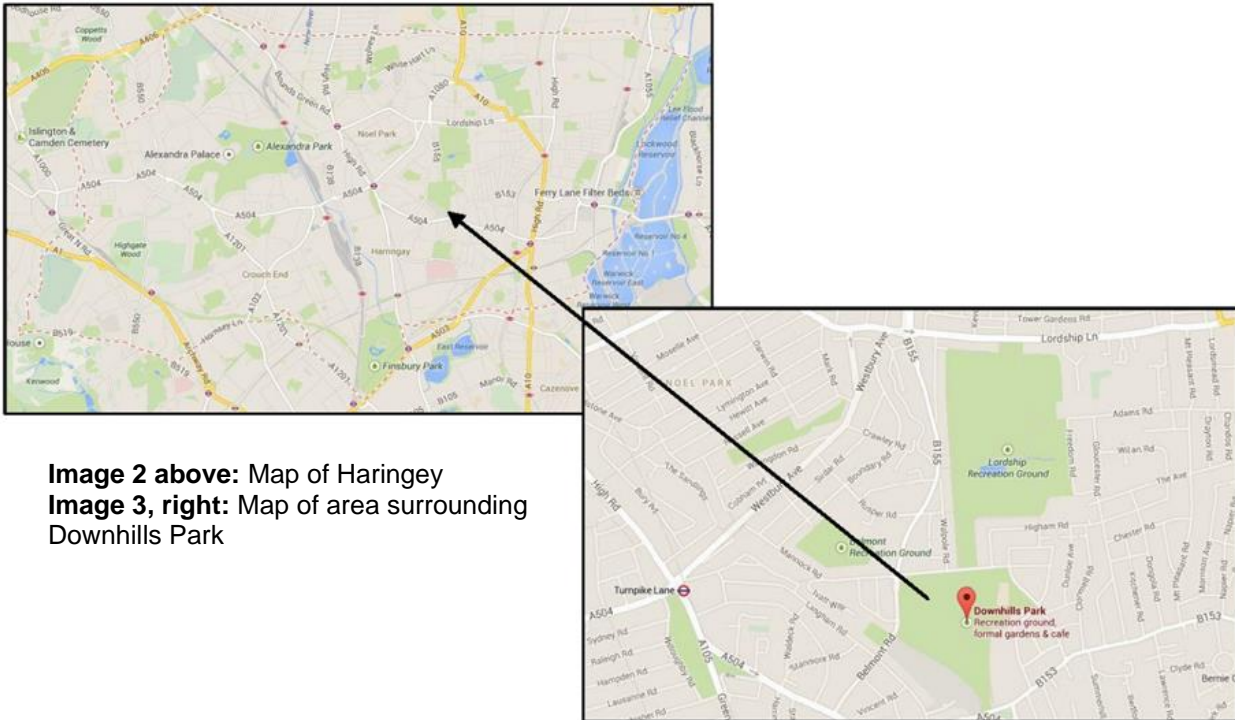
## 2. About Downhills Park

Downhills Park is a park in the West Green w of Haringey.

The park covers 12 hectares (30 acres); it includes an open recreation space and a managed garden area that includes a rose garden, tennis courts and basketball courts. It received the Green Flag Award in 2006.

### 2.1 Site location and description

Downhills Park covers an area of 120,208m<sup>2</sup>. It is in the ward of West Green, one of 19 wards within the London Borough of Haringey and is located within a densely populated area.



**Image 2 above:** Map of Haringey  
**Image 3, right:** Map of area surrounding Downhills Park

Downhills Park is an amenity park bounded by housing, schools and residential streets. The park is situated in Tottenham with a diverse community of different cultures.

Downhills Park Road skirts the northern end of the park, with West Green Road to the south, Keston Road to the east and Belmont Road to the west.

To the north of the park, just across the road, lies Lordship Recreation Ground, a park of approximately 234,000m<sup>2</sup>. To the north west of Downhills Park lies Belmont Recreation Ground covering 31,000m<sup>2</sup>.

Two schools sit on the boundary of Downhills Park: Park View Academy, a secondary school, and Harris Primary Academy.

Together Downhills Park and Lordship Recreation Ground form an area of Metropolitan Open Land, both also contain areas designated as Local Sites of Importance for Nature Conservation.

### **Downhills Park, West Green Road / Downhills Park Road, N17**

The coordinates of Downhills Park are 532457 / 189563 and grid reference TQ324895

## 2.2 Facilities



**Image 4: Map of Downhills Park showing its facilities**

Downhills Park contains the following;

**Play Area;** Divided into 2 parts with facilities for up to 8 years old and over 8's



The play area is located to the south eastern area of the park. Here the play opportunities are split into two distinctive areas aimed at different ages and abilities.

The area aimed at children up to 8 years of age was refurbished in 2012 using £40,000 funding from the London Marathon Fund. Here there are two bouncers, a slide, a couple of baby swings and a multipurpose climbing frame incorporating ropes, bars, climbing poles and a slide

There are two additional swings aimed at older children and a multipurpose wooden climbing frame incorporating climbing logs, ropes, swing bridges and monkey bars, and there are a number of benches and picnic benches located in the play area for parents and carers to sit and watch the children, with shade provided by the variety of trees nearby.

### **Tennis Courts; 3 full sized courts**



There are three full sized tennis courts within Downhills Park. These have always been very popular and usage has increased since the introduction of the cafe and toilet provision. In 2006 the surface to these was re-laid and the fencing replaced. However, at the time, the issue of encroaching tree roots was not addressed, and the courts are now in need of a complete redesign and rebuild.

There is a Tennis Development Programme in place hosted on these courts and run by a Tennis Development Office who is employed by Fusion and White Hart Lane Tennis Club.

Tennis for Free are a community sports charity that provide free coach led tennis sessions and FREE access to tennis courts in local parks around the UK. They target all members of the community, especially children from low income and workless families. We have worked with them this year to bring sessions to Downhills Park. These will launch on Saturday June 1<sup>st</sup> 2019, with sessions taking place from 11am – 12.30pm.

As part of this programme regular adult drop in sessions are provided, as well as a full range of kid's lessons, holiday programmes and quite a bit of disability provision. The programme is very sustainable and is currently operating at a small surplus.

The tennis sessions are currently promoted onsite by posting banners and notices up on the tennis court fencing but a more permanent, dedicated notice board is due for installation in the future.

**Multi Use Games Area;** Set out and equipped for Football and Basketball.

**Café ;** a well-run and popular small café on the site of the old bowls pavilion. Downhills Cafe now sits where the old bowling pavilion once did. The pavilion was knocked down in 2007 following dwindling membership to the bowls club.

The prefabricated structure that houses the cafe and toilets was installed in 2011 and now provides a community focal point for users of Downhills Park that was desperately lacking.

The cafe is open daily, from 9am to 5pm and provides drinks and food that is produced on site.

The previous bowling green can still be seen today and provides the perfect outside seating area in the summer.



The Café



Gaelic Football Club

**Natural Play / combined ecology features;** a number of felled trees placed strategically around the park to offer opportunities for play and “bug nesting”

**Ecology Zone;** a strip of natural woodland on a sloping hill, complete with a small pond. This area has potential to be developed as an ecology zone. The main area of this woodland is made up of Oaks, Hornbeams and Hawthorn.

**Table Tennis area;** A table tennis table was installed in 2013, supplied for free by the English Table Tennis Association. The table was installed on concrete plinths with reinforced matting at each end to minimise wear and tear on the grass. The table is incredibly popular and damage to the surrounding surface has been more than anticipated. Ways to reduce this are currently being considered.

**Outdoor Gym;** An outdoor gym was installed in March 2019. It has 9 pieces of equipment, including a fully accessible hand bike. It was funded through the Active Communities budget and has been well used since installation.

**Recreation Ground and Sport Pavilion;** a well-used sports field with 2 full sized rugby / Gaelic football pitches, managed in partnership with Finsbury Park Rugby Club. The junior pitch is currently being used casually by pupils from Park View Academy. Council officers are currently looking to get a permanent junior team in place (under 14 / 15s), who will work with the other clubs on site to facilitate matches. The Parks Service would work with this team to produce a development plan, progressing towards Charter Standard, girl’s development and inclusion.

The Gaelic Football and Rugby pitches are used by a sports consortium (The Downhills Park Sports Partnership) made up of Finsbury Park Rugby Club, Eire OG and Holloway Gaels Gaelic Football Clubs. Each team plays and trains in the park on a weekly basis, offering rugby/Gaelic football for adults. The Holloway Gaels are an exclusively female Gaelic football team.

They have a formal agreement with Haringey Council to use the sports pavilion, providing them with changing facilities. A one-year lease is currently in place and we will be working with the club to try and agree a five to ten-year lease, which will give the Council and the Club greater scope for applying for funding to improve the pitches and the club house and changing facilities. The club currently use their own resources to make repairs and refurbishments; working together we have recently identified a range of drainage improvements for the pitches; ranging in scope and scale from localised verti-draining, to the installation of lateral drains and potential SUDS schemes. The club themselves are currently implementing some of the “quick-fix” recommendations (such as digging localised soakaways and top-dressing the field), whilst the investigation of the pro’s and con’s, costs, implications, and funding identification for further improvement projects will form part of the ongoing actions for the park improvement plan.

Local football teams and Park View Academy (school next to the park) use the football pitch in the park to train and play football matches on a weekly basis. There isn’t currently a team that use Downhill’s Park as their home pitch, (though the pitch is used occasionally).

**Italian Gardens;** a formal “Italianesque” garden area, popular for “quiet” relaxing by users. The Italian Gardens are the most formal part of Downhills Park and are a throwback to the days of the large house that once stood, thought to be constructed in the eighteenth century.

The fountain that once stood at the centre of these laid out gardens was filled in and planted many years ago. A low standing fence separates the Gardens from the rest of the park, with access gates on either of the four fence lines.

The beds contain some palms, ornamental seasonal bedding and lavender, but with resources being restricted it is becoming more and more difficult to maintain these as they used to be.

We are exploring ways to revive these gardens; potentially change the planting scheme to minimise maintenance, or introducing more sustainable and appropriate planting, with a view to this area being “gardened” as a community volunteering project.



Quantified Assets	Length (Metre)	Number	Square Metre
Bench		52	
Bulb Planted Areas			290.8
Children's Playground			253.13
Dog Bin		9	
Fencing	2105.75		
Football pitch - senior			1122.1
Grass All Types			88665.03
Green Flag and Pole		1	
Hedge - all types			0
Lighting Columns		16	
Litter Bin		30	
Memorial Bench		1	
Ornamental Water Feature		1	
Park Gate		23	
Park Sign		27	
Parks Building - General		1	
Path			13096.18
Picnic Tables		4	
Recycling Bin		3	
Rose Bed			759.34
Shrub Bed			10827.13
Spring and Summer Bedding			114.53
Wall	859.23		
Woodland Area			6428.7

### 2.3 Trees

Parks and open spaces are of significant arboricultural importance as they contain some of the largest and oldest trees in the borough. Trees are an essential feature in parks providing shade and structure, making them a more attractive environment to visit.

There is a planned inspection programme for which we aim to inspect each tree every four years. Trees in parks usually only require maintenance to mitigate risks to site users and adjacent properties.

There is a high density of trees in Downhills Park, including some small wooded areas. The recreation side of the park and pathways are lined with avenues of London Planes, some dating back one hundred years or so and were part of the original planting scheme of the old house that once stood. The main area of woodland in the middle of the park is made up of Oaks, Hornbeams and Hawthorn. There are a number of interesting individual trees including a Turner's Oak located to the northwest of the play area and two Cork Oaks just within the West Green Road gate.

There has been some more recent planting of trees by the Friends Group and Parks Service including Limes and Oaks.

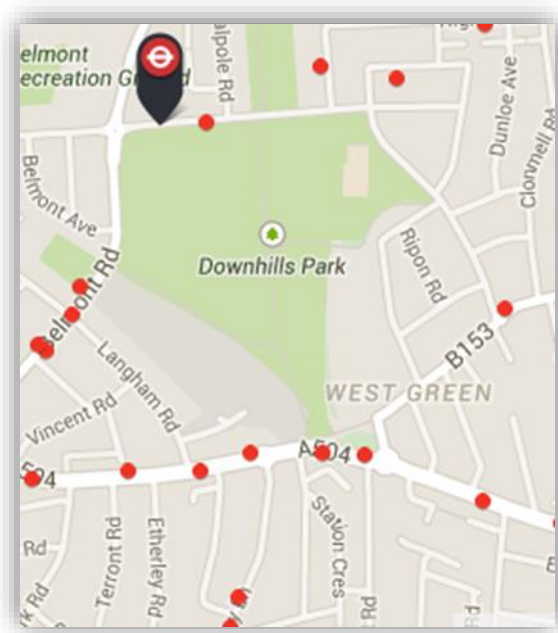
### 3. A welcoming place

#### 3.1 Visiting Downhills Park

##### 3.1.1 Public transport

Downhills Park is approximately half a kilometre from Turnpike Lane tube station, on the Piccadilly line and one kilometre from Seven Sisters tube station, located on the Victoria line.

##### Bus stops around Downhills Park



##### 3.1.2 Vehicles

There are no parking facilities within Downhills Park. Much of the surrounding roads to the northwest, west and southwest of the park are covered by Controlled Parking Zones which are in operation on Monday to Friday / Saturday, between the hours of 8am to 6.30pm. For short stay parking without a resident's or visitor's permit there are pay and display machines located in a number of bays. There are no parking restrictions in the roads to the north east, east and south east of the park.

##### 3.1.3 Bicycles

Bicycles are permitted in Downhills Park though cyclists are expected to be attentive to other park users on the shared use paths. One national cycle network runs through Downhills Park along Midnight Alley and another runs along Downhills Park Road to the north of Downhills Park. There are nine bike stands located at four locations around the park, further encouraging sustainable travel. These are at:

- 4 x Cafe
- 2 x MUGA
- 2 x Tennis Courts
- 1 x Italian Gardens



### 3.2 Entrances

There are eight entrances into Downhills Park. All entrances are identified by individual gate names, making meeting points and identification for maintenance easier for the user and operative staff. All entrances are step free.



### 3.3 Access for all

The Equality Act 2010 defines a disabled person as someone with ‘a physical or mental impairment, which has a substantial and long-term adverse effect on their ability to carry out normal, day-to-day activities’.

Haringey Council and its partners are required by law to ensure that disabled people are not discriminated against with regard to access to public places, such as Downhills Park. The council is also committed to meeting its obligations under the Public Sector Equality Duty with regard to ensuring that those with and without protected characteristics under the Equality Act are able to enjoy the park’s facilities.

This commitment is considered whenever changes or improvements are made to the park. This not only benefits disabled users of the parks and their carers/companions, but also benefits those with small children and older people.

### 3.4 Signage

The welcome signs at each entrance to the park show an individual gate name for ease of identification as well as contact numbers for the council, police emergency and non-emergency numbers and for the Friends of Downhills Park.

Symbols are also shown to highlight initiatives and make users aware of restrictions in place. These include:

- shared use walking / cycling symbols (with pedestrian priority)
- no unauthorised vehicles
- keep your park tidy
- three dog control orders with potential penalty for failing to adhere

The entrance signs also include the Neighbourhood Watch logo to show the partnership the council has with the Haringey Neighbourhood Watch Association (see section 5.7).

As well as the entrance gate signs, the play areas have signs which include:

- contact details for the Council
- any relevant age restrictions
- no alcohol symbol
- no smoking symbol
- no dogs allowed
- no glass bottles
- a message that children must be accompanied at all times

Some signage has the 'old' Haringey Council logo and branding. As signs need to be replaced or renewed the new branding will be incorporated into the signage. Signage for new facilities will carry the new branding.

### **3.5 Toilet facilities and refreshments**

The recently refurbished café within the park has proven very popular and offers a range of reasonably priced sandwiches, small dishes, a range of coffee's and many other refreshments. The toilet facilities within the café are available for park users, and the café even has a large selection of children's toys for use by visiting families.

### **3.6 Events**

The council welcomes and encourages events put on for the community in Downhills Park. The [outdoor events policy](#) sets out the types of events that are encouraged and those we do not allow. The Park has the potential to host events in the designated event area on the sports pitches. Those interested in holding an event of any size can refer to the [Events Brochure](#).

Small community events and activities are particularly encouraged so we have made the application process easier and events for under 100 people are free of any charge.

As well as the organised sporting activities that take place in Downhills Park, one of the top annual highlights is Art in the Park.

Hosted by the Friends of Downhills Park this offers local residents and park users the opportunity to take part in a number of artistic projects. For the past few years it has been supported by the Parks Service through the Small Grants Scheme.

The Cafe also does their own, small events within the cafe, and local schools book the recreation field for the annual sports days.

Money generated from events contributes to providing support for community events to take place in parks. This includes more than £20,000 from the [Parks and Open Spaces Small Grants](#) 'community events' theme which is available for anyone to apply for.

The  
Friends of  
Downhills Park

# ART IN THE PARK

**SUNDAY 22nd JULY 2018**  
1-5pm DOWNHILLS PARK

Supported by The Tottenham Grammar School Foundation and Haringey Council



**TOTTENHAM  
PLOUGHMANS  
DAY OF THE  
DEAD**

Sunday 2nd November  
Downhills Park Cafe  
11am-5pm




Celebrating the very best of Tottenham;

Live music, Redemption Brewery, Wildes Cheese, Living Under One Sun, Downhills Café, Filling the Gap, Peel and Chimney, Craving Coffee cocktails, dressing up box, Day of the Dead art, Photo booth & more

An Environmental Impact Fee is set out within the events fees and charges. This is charged to hirers on a sliding scale with the price dependent on the size and scale of the event. For 'major' events – with attendance or 10,000 people - a fee of £10,600 is charged. This is specifically set aside for the Friends and recognised stakeholders of the park the event took place in, to bid for.

Event management training is also held each year for groups who want to learn how to put on a safe and exciting event in a park.



Art in the park 2018

## 4. A Clean and Well-Maintained Park



Mixed shrub planting border near Downhills Avenue entrance

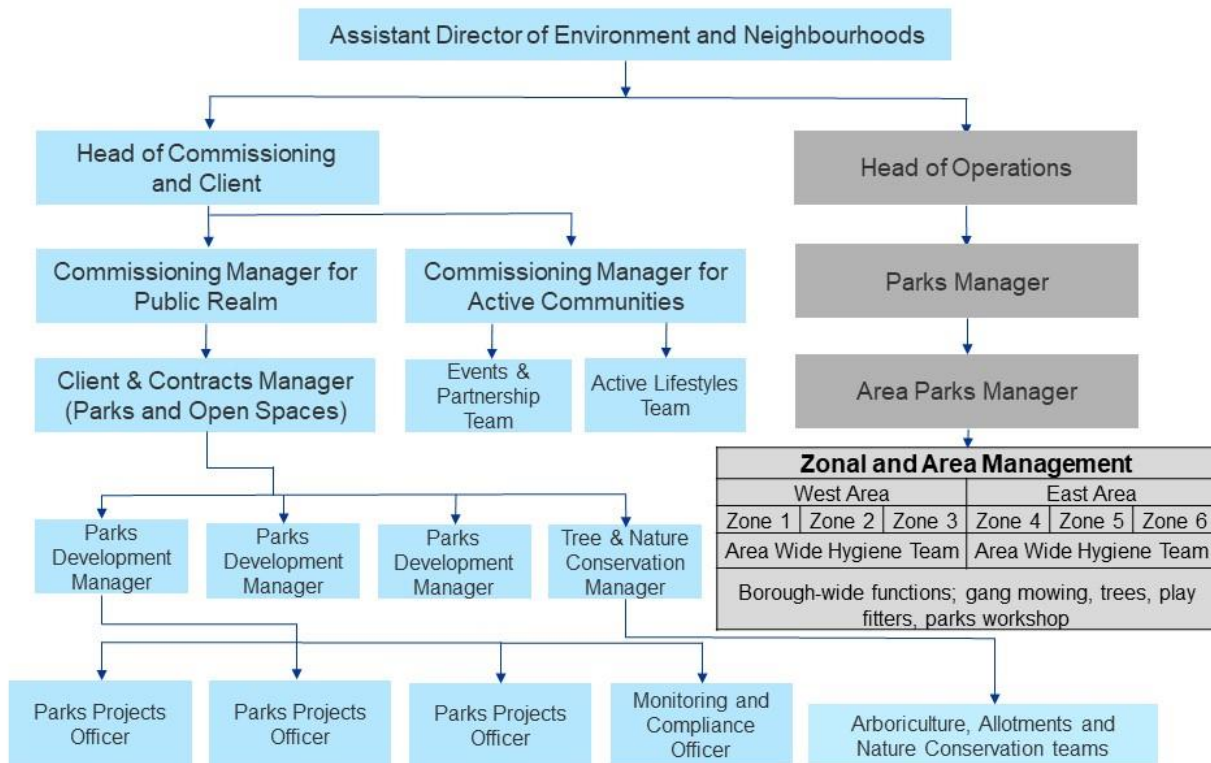
### 4.1 Operational and management responsibility for parks

Responsibility for the management of maintenance of all the borough's parks is split between three council teams.

The Parks Operations team is responsible for the ground's maintenance and management of litter and hygiene within the park, while the Client and Commissioning Team is responsible for the physical assets within parks, arboriculture, allotments, nature conservation and the management of projects within parks.

The Active Communities Team is responsible for the management of events in parks, activation of parks through cycling, walking, and other fitness initiatives. The team is also responsible for the management of the council's small grant scheme and its partnerships with Neighbourhood Watch and The Conservation Volunteers.

## Haringey park structure chart (April 2019)



1

### 4.2 Current maintenance by Park Operations

The structure chart in section 4.1 shows a simplified overview of the work of the Park Operations Team (shaded in grey).

As shown, the borough is divided into two geographic sections (east and west), each of which is divided into three zones, giving a total of six zones across the borough. The zones are shown in the map overleaf.

Each zone has a six grounds maintenance staff: a team leader, a senior operative and four gardeners, but team sizes are altered to meet operational demands by transferring staff between zones and by bringing in seasonal agency resource as necessary. Downhills Park is in operational zone 5.

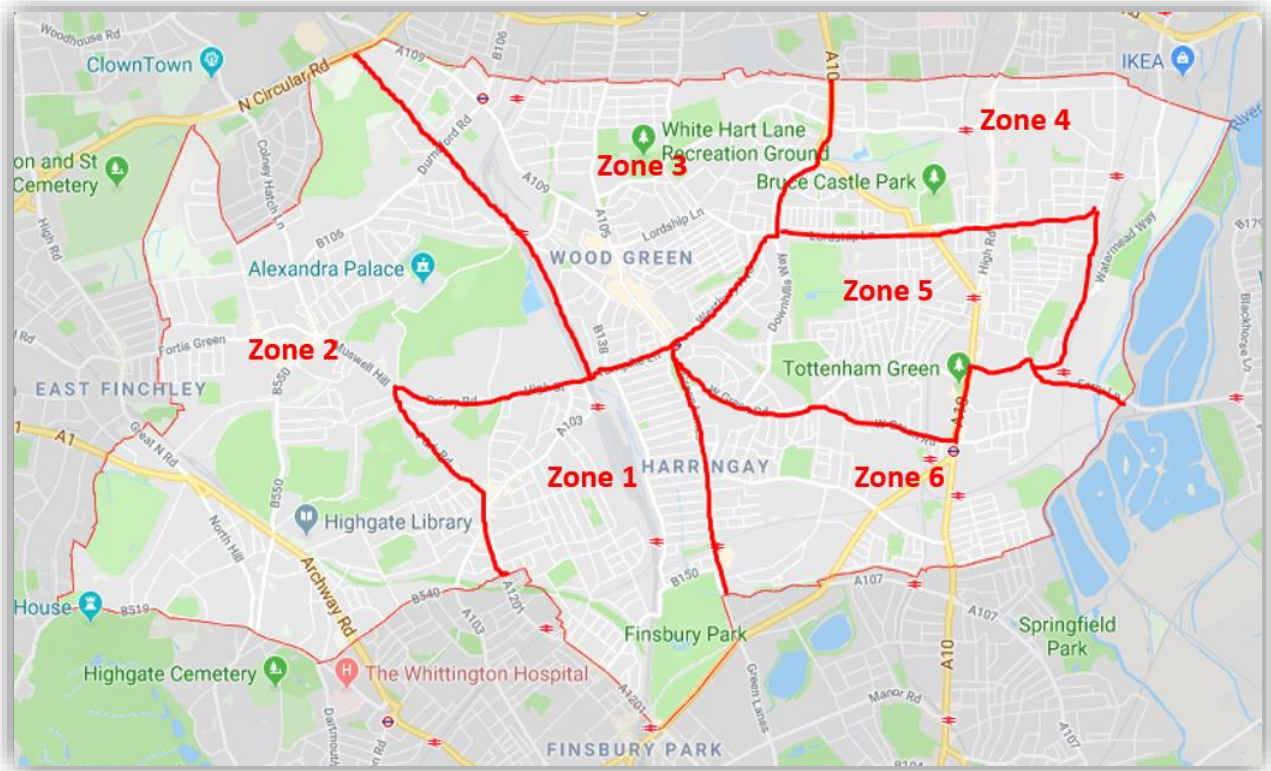
The Parks Operations structure is the total resource available for all parks and open spaces. This not only includes council parks and open spaces, but also all the Homes for Haringey sites across the borough.

In addition to the zonal operations, the hygiene function is organised at a section-wide basis, one team operating in the east section of the borough and the other in the west. The hygiene teams empty litter bins across all parks and open spaces to an agreed schedule. They also respond to emergency cleansing and hygiene requests.

At a borough-wide level there are also two play fitters who undertake maintenance and repair of playground equipment and outdoor gyms, and a team of two in-house arboricultural staff who carry out tree planting and supplement the use of external contractors for tree maintenance and responsive arboricultural work. Tractor-based mowing of larger areas of grass is also carried out as a borough-wide activity.

There are two parks workshop fitters who carry out regular servicing of equipment and reactive repairs to parks machinery. They are based in a dedicated parks workshop at Finsbury Park Depot.

Most park operatives work Monday – Thursday 7.30am – 3.30pm and Friday 7.30 to 1.30pm. However, limited weekend work also takes place with pitch marking and hygiene activities for example



**Map showing zones for operational management of parks in Haringey**

### **4.3 Asset management and management of projects in parks**

The Parks and Open Spaces team now works to the same six zones as the Operations team. One officer has been allocated to lead on projects, asset management and community liaison in each zone. Each zonal officer has responsibility for:

- Regular asset inspections
- Asset related enquiries
- Non-emergency asset repairs
- Management Plan input
- Project identification
- Friends Groups liaison
- Support for Friends-led development work
- Councillor liaison
- Identification of volunteering opportunities

The allocated officer for Downhills Park, which sits in Zone 5, is Chris Poore, Parks Zonal Officer.

A Nature Conservation Officer and a Monitoring and Compliance Officer have responsibility for parks and open spaces across the whole borough, including Downhills Park.

#### **4.3.1 Park asset inspections and Spotlight visits**

In 2018 the council adopted the Mayor of London's typology for parks. Under this typology Downhills Park is described as a local park (category A3) as it is between 2-20 hectares in area.

Since January 2019 the council has also instigated a programme of park asset inspections with the frequency dependent on the type of park. As a local park Downhills Park is inspected quarterly.

The inspections cover hard assets, including (where applicable):

- Bins, benches, bollards, lighting columns
- Signage, noticeboards, interpretation
- Paths, steps, handrails, areas of hardstanding, car parking and roadways
- Railings, fencing, gates, walls
- Play area safety surfacing and minor repairs
- Outdoor gyms
- MUGAs, tennis courts, hard sports courts
- Football goalposts
- Paddling pools
- Historic/heritage features/War memorials
- Fountains, artworks, structures, pergolas
- Waterbodies, SUDs, water leaks, drain covers
- Cycle stands, raised beds
- Bird & bat boxes

Parks assets are inspected and rated according to their condition, as follows:

A: Excellent: No action required

B: Good: No action required

C: Acceptable: No action required

D: Improvement required: Defects will be addressed as budgets allow

E: Emergency repair required: Make-safe within 24 hours. Full repair within 28 days.

From 2019-20 we will use the Confirm database system to record the outcomes of all inspections, defects and customer enquiries. Confirm Connect handheld devices will be the main tool for recording site inspections.

Defects can also be reported by the public, Friends, councillors and stakeholders online via the Council's website at [www.haringey.gov.uk/park-problem](http://www.haringey.gov.uk/park-problem) or by using the Love Clean Streets smart phone app or by calling the council.

As part of our zonal approach we have also started to hold Spotlight meetings with councillors, Friends and key stakeholders of Downhills Park every 2-3 months. This is an opportunity to look at the park together to identify issues and opportunities within the park and by the stakeholders.

#### **4.3.2 Capital projects**

A parks capital project commences once a project brief has been approved by the council's Parks & Leisure Board and a capital budget and project manager has been allocated. The project manager is a member of the Parks Development team's 'projects' team.

Capital projects for Priory Park are listed in the Action Plan in section 12

#### 4.4 Scheduled Maintenance

The following table provides a summary of the maintenance regime within Downhills Park.

##### Scheduled maintenance in Downhills Park

Activity	Frequency	Notes/comments
<p><b>Grass cutting:</b></p> <p>To achieve grade A at each maintenance visit:</p> <ul style="list-style-type: none"> <li>• Grass has been uniformly cut and is 35mm or less.</li> <li>• Edges are trimmed and not growing onto hard surface or bedding.</li> <li>• Litter picking prior to mowing.</li> </ul> <p>Grass remains at grade B or above prior to maintenance visit:</p> <ul style="list-style-type: none"> <li>• Grass is 35-60mm long but looks tidy.</li> <li>• Edges are slightly untidy</li> <li>• Litter picking as per hygiene schedule.</li> </ul>	<p>Approximately Fortnightly</p>	<p>During the growing season (Mar-Oct approx.). May extend into November subject to prevailing climatic conditions.</p>
<p><b>Bulb areas in Grass</b></p> <p>To achieve grade A:</p> <ul style="list-style-type: none"> <li>• Areas where bulbs are present should remain uncut from time of bulb emergence, until 6 weeks after flowerings ceases, or when foliage dies back or turns brown.</li> <li>• Litter picking as per hygiene schedule.</li> </ul>	<p>One occasion plus regular litter picking</p>	<p>Works required where bulbs are present in grass on site.</p>
<p><b>Meadows</b></p> <p>To achieve grade A:</p> <ul style="list-style-type: none"> <li>• Meadow grass is cut at correct times of year for species type.</li> </ul>	<p>One or more occasions subject to type. Plus regular litter picking.</p>	<p>Guidance on maintenance schedule to be drawn from the conservation management plan for each park.</p>



Activity	Frequency	Notes/comments
<ul style="list-style-type: none"> <li>• Area surrounding the meadow is well maintained.</li> <li>• Litter picking as per hygiene schedule.</li> </ul>		
<p><b>Shrub and Rose bed maintenance</b></p> <p>To achieve grade A at each maintenance visit:</p> <ul style="list-style-type: none"> <li>• Bed free of weeds.</li> <li>• No litter.</li> <li>• Mulched where appropriate.</li> <li>• Wide variety of plants.</li> <li>• Roses deadhead as required.</li> <li>• Shrubs pruned as required.</li> <li>• Edging well maintained.</li> </ul>	<p>Two – four occasions as required per location.</p>	<p>Herbicide application will take place on two occasions a year via controlled droplet application.</p>
<p><b>Summer Seasonal Flower Beds</b></p> <p>To achieve grade B at each maintenance visit:</p> <ul style="list-style-type: none"> <li>• Bed free of weeds.</li> <li>• No litter.</li> <li>• Adequate variety of plants (more could be added – excluding beds that have plants that are not yet established).</li> <li>• Edging maintained.</li> <li>• No deadheads.</li> </ul>	<p>Up to ten occasions</p>	<p>Gapping up of bedding to take place in response to vandalism.</p> <p>Drought tolerant planting to reduce need to water.</p>
<p><b>Hedge Maintenance</b></p> <p>To achieve grade A at each maintenance visit:</p> <ul style="list-style-type: none"> <li>• Well shaped and trimmed hedge.</li> </ul>	<p>Two occasions per year except Privet hedges requiring three occasions.</p>	<p>Account of bird nesting to be taken each year and site specifics.</p>

Activity	Frequency	Notes/comments
<ul style="list-style-type: none"> <li>• Level sides and top.</li> <li>• No missed areas.</li> <li>• Base weed free.</li> <li>• No arisings present</li> </ul>		
<p><b>Staked Tree Maintenance</b></p> <p>To achieve grade B at each maintenance visit:</p> <ul style="list-style-type: none"> <li>• Growth is healthy and vigorous with little sign of disease.</li> <li>• Branches have been correctly pruned for species, purpose and location.</li> <li>• No dead or hanging branches.</li> <li>• Small amount of basal or sucker growth.</li> <li>• Base has been mulched where applicable.</li> <li>• Tree stake in good condition, firm in ground and</li> <li>• not rubbing tree where applicable.</li> <li>• Tree tie holding tree firmly but not tightly to stake where applicable.</li> <li>• No damage to base of tree during maintenance.</li> <li>• No dead material or cuttings left in area.</li> </ul>	<p>One occasion per year plus watering for new trees during first two seasons</p>	
<p><b>Sports Pitch Maintenance</b></p>	<p>A minimum number of visits as required to</p>	<p>Seeding and fertilising as required.</p>

Activity	Frequency	Notes/comments
<p>To achieve grade B at each maintenance visit:</p> <ul style="list-style-type: none"> <li>• Surface in good condition.</li> <li>• Grass is cut to standard.</li> <li>• Line markings are well maintained and may be slightly faded.</li> <li>• Where net supports exist, in good condition.</li> <li>• Leaf fall removed.</li> <li>• Litter picking as per hygiene schedule.</li> </ul>	<p>achieve the grass height required for football / rugby.</p> <p>Weekly line marking during playing season</p> <p>Winter season work as required to optimise playing period.</p>	
<p><b>Bins, Litter and Dog Fouling</b></p> <p>To achieve grade B at each maintenance visit:</p> <ul style="list-style-type: none"> <li>• All bins are emptied</li> <li>• The site is litter picked but may have a small amount of scattered litter in low traffic areas.</li> <li>• Predominately free of detritus except for some light scattering.</li> </ul>	Daily	Dog fouling dealt with when reported.
<b>Fly tips and other hygiene issues</b>	Reactive	In response to emergency call-outs
<b>Sweeping of hard surfaces (e.g. tennis courts, hard standing etc)</b>	Reactive	
<b>Gate locking</b>	Daily	Not applicable to all parks

#### 4.5 Setting and measuring service standards

The quality of grounds maintenance and cleanliness of parks and open spaces is assessed via a simple four-point assessment system, called the Parks Quality Scoring system. The scoring categories are:

- A – Excellent
- B – Good
- C – Acceptable
- D - Unacceptable

These service standards are set out in a booklet that is made available to all grounds maintenance and hygiene operatives. The aim of the booklet is to clearly and visually illustrate

the different standards. Photographs, alongside brief and simple text, provide staff with a clear means of assessing the standards they are expected to achieve.

This system has since been adopted by the London Parks Benchmarking Group who have updated the manual and are working hard to get this recognised as an industry standard within the grounds maintenance trade both on a London-wide and on a national level.

The key performance indicators (KPIs) within this scoring system are for three main areas of activity and a fourth more seasonal category:

- Grass (which includes the grass cut height, follow up and final finish)
- Shrubs (which includes pruning, weeding of beds and general appearance)
- Hygiene (which is made up of 3 separate scores of litter and bins, detritus and graffiti)
- Seasonal and other categories (horticultural seasonal work such as hedges, leaf clearance, rose bed maintenance and seasonal bedding as well as nature conservation and some infrastructure points such as pathways).

The Monitoring and Compliance Officer visits each park and open space on a regular basis to assess these aspects of the park against the service standards.

An overall score is calculated based on the percentage of A (Excellent) and B (Good) scores achieved across all categories.



### Illustrative service standards for grass cutting

The boroughwide targets and performance for these KPIs are as follows.

Category	Target A/B	Achieved 2018-19
Overall Site Standard	90%	61%
Grass	90%	83%
Shrubs	60%	71%
Hygiene	55%	65%

#### 4.6 Monitoring the condition of equipment and physical assets

Since January 2019 a Parks Project Officer also carries out a monthly site inspection of the physical assets in Downhills Park. The condition of each item is noted and where applicable repairs (or replacements) are requested. Any grounds maintenance or hygiene issues that are observed, such as overflowing bins or dumped rubbish are raised with the appropriate officer within Parks Operations.

The asset inspections do not include play and outdoor gym equipment which are inspected by the RPII registered Play Inspection Company on a quarterly basis. They conduct detailed quarterly inspections on all play equipment and outside gym equipment to ROSPA standards. Each item of equipment is risk assessed and a written report is provided to the council. Where equipment is deemed to represent a medium or high risk it will be repaired, and if necessary taken out of use until the repairs are completed.

Two council officers within Parks Operations are also trained and qualified ROSPA inspectors and can sign off any repair to play and gym equipment.

#### 4.7 Tree maintenance programme

From 2016 a four-year planned inspection programme was introduced to identify any necessary works. Such works are prioritised and carried out within available resources.

Tree works in parks, open spaces and woodlands are usually undertaken to mitigate risks to site users and adjacent properties. For example works to trees in Downhills Park have in the past been carried out to improve security on site by raising the canopies of the trees to increase sight levels and reducing overhanging branches into adjacent roads.

#### 4.8 Graffiti

All graffiti of an obscene or offensive nature is removed within 24 hours of being reported. We aim to remove all other graffiti within three working days. Small bits of graffiti can be removed by parks operatives who have access to specialised graffiti removal kits.

Park users can report graffiti using the Love Clean Streets smart phone app, and the council website. The Council also has a 'hotline' number (020 8885 7700) direct to Veolia (the council's waste management contractor) to report obscene or offensive graffiti in parks and other public places.

#### 4.9 Maintenance of buildings, equipment and landscape

Building maintenance in parks is shared between lease holders and the council. Most modern leases in the parks have been let on a full repairing and insuring basis relieving the council of this ongoing obligation.

Older leases are internal repairs only and along with the operational buildings in parks are maintained by the council's facilities management service. The budget for building maintenance is held by them and they are responsible for maintaining the buildings and ensuring compliance with legislation.

Equipment maintenance is carried out internally by the parks service for all types of equipment. Play inspections are undertaken internally and through external specialist on a quarterly basis.

Landscape maintenance is carried out by the parks service.

#### **4.10 Hygiene**

The Hygiene Team is managed by Parks Operations, covering borough wide hygiene responsibilities. Within Downhills Park waste bins are emptied on a daily basis, and any dumped rubbish that is reported to the service will be removed.

## 5. Healthy, Safe and Secure

### 5.1 Smoking

Smoking is permitted (though discouraged) in Downhills Park although priority 2 of the council's Health and Wellbeing Strategy identifies smoking as a key factor in reducing life expectancy.

However there is a borough wide smoking ban in place in all children's playgrounds including in Downhills Park. Signage at playground entrances highlights this.

### 5.2 Alcohol

Alcohol is permitted in Downhills Park but an Alcohol Control Public Spaces Protection Order (PSPO) for West Green ward includes the entire area covered by the park.

PSPOs are intended to deal with "nuisance or anti-social behaviour in a particular area that is detrimental to the local community's quality of life". Failure to comply with a request from an authorised person to cease drinking or surrender alcohol within the boundary of the PSPO can result in a fine. An authorised person is a police officer, a police community support officer or an authorised member of council staff.

The West Green PSPO has been operation since October 2020 and last for three years. It may be renewed for another three years after it expires.

Further details can be found at <https://www.haringey.gov.uk/community/community-safety-and-engagement/anti-social-behaviour/public-spaces-protection-orders-pspos>

### 5.3 Walking

Walking is an excellent way to adopt a more active lifestyle and the health benefits can really make a difference. It's also a great way to get out and meet people.

The parks service in partnership with other agencies such as NHS Haringey offer regular organised walks in many of the borough's parks.

In 2018 a booklet called *A Walk in the Park* showcases several walks through Haringey parks including the "Linear" Trail which passes through Downhills Park.

Further details on walks and walking groups can be found at <https://www.haringey.gov.uk/parking-roads-and-travel/travel/walking>

### 5.4 Health and safety

The health and safety of visitors to, and staff and contractors working in Downhills Park is given the highest priority. Health and safety within the park is managed by ensuring that:

- play and outdoor gym equipment is installed safely and inspected regularly, with any repairs identified and prioritised through the inspection process.
- infrastructure items (including games areas, water features and so on) are inspected regularly as detailed elsewhere in this document.
- planting and landscaping is designed to minimise the risk to park users, and the operational maintenance programme keeps these risks managed
- park lighting is kept in a working condition, adequately illuminates the main thoroughfares and is regularly inspected and reviewed

#### **5.4.1 Raising health and safety concerns**

Anyone visiting a park, and everyone involved in the parks maintenance and management are encouraged to report any health and safety concerns.

Contact phone, email and web details for the Council appear on all welcome signage, as well as the police emergency and non-emergency numbers.

When people call the Council with a concern, these are logged, assessed and assigned to a relevant team/member of staff to deal with and respond to in an appropriate timescale, using the Confirm system.

#### **5.4.2 Friends**

Members of the Friends of Downhills Park are able to report issues within the park in exactly the same way as members of the public, but they also have close links with the Parks Project Officer and with Operations staff, so will usually approach them directly.

Council officers regularly attend the Friends meetings where issues can be raised and discussed.

Friends are also encouraged to report issues of anti-social behaviour and other issues through the Neighbourhood Watch Coordinator who will direct these to the most relevant person within the police to deal with them.

The Friends of Downhills Park have been instrumental in driving up the quality of the park by reporting incidents and monitoring the quality of the park, as well as starting to coordinate volunteering input.

#### **5.4.3 Safety representatives**

The parks operations service holds a quarterly Health and Safety Working Group, which is chaired by a council health and safety specialist. It is attended by representatives of operational management, staff from both east and west areas, and trades unions. These quarterly meetings provide the opportunity to raise issues that have not been fully addressed elsewhere. The group is also a place to discuss health and safety issues and legislation, and their implications on working practices and plays a key role in generating continual improvement in health and safety standards.

#### **5.4.4 Staff reporting**

All staff are encouraged to raise health and safety issues with their manager or with the health and safety representative who can raise concerns at the quarterly Health and Safety Forum.

#### **5.5 Reporting issues with the Love Clean Streets app**

The Love Clean Streets app makes it quick and easy to report problems when people are out and about in the borough. Once the app has been downloaded to a Smartphone, the public can take photos of the problem and send it directly to the team responsible for fixing it using the Confirm system. They will then receive progress updates and will be told when the reported issue has been fixed.

Unlike other 'report it' style apps, Love Clean Streets asks the user to choose from a list of Haringey specific categories for the problem, which ensures the report goes to the right team, first time and will be dealt with as quickly as possible.

#### **5.6 Community safety and policing**

Parks in Haringey remain relatively safe places, especially during the hours of daylight. Over the whole of 2020 there were 767 reported crime or incidents reported to the police across all the parks and open spaces in Haringey – an average of 63 incidents per month.



The breakdown of stats for 2021 is only available for January to September. During this period a total of 492 incidents were reported to police across all parks in Haringey – an average of 54 per month. This is a decrease of 16% and could be due to parks being much busier and therefore deterring some criminal and asb activity.

The most commonly reported crime in parks in 2021 remains robbery, which accounts for about 22% of reported crimes, but this is a seven percent decrease from the previous year. The majority of these took place after dark. Reports nearly trebled over the spring/summer months compared to the rest of the year due to the higher footfall in parks.

Between January and April 2021 in Downhills Park there were 27 reported crimes. Downhills Park accounted for 5.4% of all reported crimes in Haringey parks.

### **5.7 Extending Neighbourhood Watch into parks**

Neighbourhood Watch groups across the borough are encouraged to adopt a local park or green space. Members are encouraged to proactively report issue or concerns they have relating to crime or safety in the park.

The Neighbourhood Watch officer has also set up a Haringey Dog Watch scheme. This is an initiative for dog walkers to meet with other dog owners and police in an enjoyable, relaxed atmosphere.

The walks are held in a different Haringey park every month and everyone is welcome to come along.

### **5.8 Designing out crime**

It is widely recognised that key factors in ensuring park safety and the perception of safety are to ensure high usage, adequate onsite staffing presence, good maintenance of buildings and infrastructure and a high level of community involvement and 'ownership'. These matters are dealt with in other sections.

Sensitive landscape management can also assist in reducing crime. Assessing accessibility and potential crime spots, known as 'designing out crime' may result in the removal of inappropriate tall shrubs and their replacement with a more suitable low growing species. In other instances entrances may be redesigned, or lighting installed.

### **5.9 24 hour access**

Downhills Park is not locked overnight.

### **5.10 Dogs**

Dogs and dog walking are a valuable part of the park scene, and dog carers are probably the main daily user group in many green spaces. Their collective presence is a key ingredient of green spaces being populated and safe to use, especially at quieter times of the day and year. Dog walkers are often described as 'eyes and ears' of a green space.

We recognise that the vast majority of dog owners are responsible and respectful to their local community. However, we receive complaints from residents about dog fouling and the behaviour of some dogs (and their owners).

A Public Spaces Protection Order (PSPO) is in place across the borough to control the behaviour of dogs. The prohibitions have been designed to be as simple as possible, giving clarity and outlining expectations.

Well behaved dogs can be walked or exercised freely off lead in all large parks (over half a hectare) including Downhills Park. This promotes healthy exercise for dogs and takes into consideration the needs of the borough's dog owners and the welfare of dogs.

The Public Spaces Protection Order (PSPO) covers five areas of dog control:

- Dog fouling
- Keeping dogs under control
- Putting dogs on a lead if directed
- Keeping dogs out of designated areas (such as playgrounds)
- Limiting to six the number of dogs that one person can bring to the park

Failure to comply with the requirements of the order can result in a fine or to court if the fine is not paid within a specified timeframe.

The PSPO is in force for three years from October 2017 and can be extended for a further three years. Full details can be found at [www.haringey.gov.uk/sites/haringeygovuk/files/pspo\\_-\\_dog\\_control\\_-\\_with\\_seal\\_0.pdf](http://www.haringey.gov.uk/sites/haringeygovuk/files/pspo_-_dog_control_-_with_seal_0.pdf)

These powers came into effect on the 20 October 2017, introduced under the Anti-Social Behaviour, Crime and Policing Act 2014. The Public Space Protection Order will remain in force for three years.

## **6. Sustainability**

### **6.1 Greenest borough strategy**

Haringey's Greenest Borough Strategy was adopted in 2008 in response to growing concerns around climate change.

The Strategy sets out the Council's and its partners commitment to tackle climate change under seven environmental policies to ensure achievement of their 'green' vision over a ten-year period, and details what the council, its partners and the public can do to contribute.

- Improving the urban environment
- Protecting the natural environment
- Managing environmental resources efficiently
- Leading by example
- Encouraging sustainable design and construction
- Promoting sustainable travel
- Raising awareness and involvement

The management and maintenance of parks and how they are used relate back to many of the individual targets within the strategy. Where possible these have been instilled in everyday working practices in and relation to Downhills Park.

### **6.2 Pesticide use**

The council uses a range of herbicides to control weeds in parks. It remains the most effective in terms of the required resources – with two treatments per year often sufficient to prevent weed growth, as opposed to regular treatment by hand or other means.

Chemicals are stored, handled, used and disposed in accordance with manufacturer/supplier requirements, and a COSHH assessment is prepared for each of the substances used.

Reliance on mechanical methods of weed control (e.g. strimming) is reducing as this has an impact on both the operator and also does not address the weed at its roots.

The use of herbicides as a principal form of weed control is increasingly under scrutiny, and the parks department is routinely considering alternatives. This is particularly true of weedkillers containing the component glyphosate. This has received a lot of press coverage subsequent to court cases in the United States, but it remains licensed for use in the UK and Europe.

Officers of the council monitor developments in scientific findings. At this stage, glyphosate appears not to cause harm to humans or any animals larger than micro-organisms.

### **6.3 Sustainable use of materials**

The parks service refrains from the use of non-sustainable peat-based products and challenges nursery suppliers to provide alternative supplies. Where plants are obtained from private nurseries we request plants grown in a peat free environment.

Our infrastructure procurement policy is to use recycled materials where possible. We aim to acquire recycled plastic benches where possible; or where timber is required we seek to use those from sustainable sources.

### **6.4 Recycling**

Although some parks have dedicated onsite recycling bins, all waste collected from parks be it from standard waste bins, or recycling bins is taken to the North London Waste Authority (NLWA) depot. Materials that can be recycled are extracted and processed accordingly.

Where possible green waste is recycled on-site; grass cuttings are left on the grass; and hedge cuttings are mulched and placed under the hedge or in other areas of the park.

In autumn when a large amount of green waste is generated, that which cannot be used or composted on site is taken to the NLWA depot for recycling. The resulting compost is then collected for use in the parks.

A monitoring system is in place to record the amount of green waste that is mulched on site and the amount that goes to NLWA for recycling, as well as recording the percentage of green waste that is recycled. The system aims for 100% recycled green waste. Leaf litter is already composted or mulched on site.

After Christmas the borough has a number of advertised sites where people can drop off their used Christmas trees. One of these is Downhills Park. The old trees are stored in the park before being transported to the NLWA depot where they are recycled.

### **6.5 Pollution reduction**

All new machinery used in parks is required to have low vibration levels and low emissions. Machinery is serviced on a regular basis by our in-house parks workshop, helping to ensure low emission and pollution levels. Vehicles meet current emission requirements, and the fleet will comply with the requirements of the London-wide Ultra Low Emission Zone when that is introduced in October 2021 to include Haringey.

We also aim to reduce vehicle emissions through increasing the amount of on-site composting; and through reducing downtime caused by excessive travelling.

Bonfires are not used for safety reasons as well as health concerns due to the smoke.

### **6.6 Water efficiency**

Drought resistant plants and trees are increasingly being chosen by managers to ensure that they survive the drier and warmer months and require less watering during these periods.

## **7. Community Involvement**

### **7.1 Volunteering in parks**

Haringey Council actively supports and encourages volunteering in our parks and green spaces. There are a range of mechanisms to support volunteering and community involvement.

Downhills Park has utilised volunteering in the past (for example in planting the wildflower orchard area). There is currently an ambition from the Friends group (and the council) to start planning and formulating some more volunteering activities on site. The Friends have recently been in contact with Trees for Cities and have identified potential tasks which we are hoping to see co-ordinated on-site this year.

#### **7.1.1 Volunteer Partnerships**

The Conservation Trust Volunteers (TCV) Haringey are based at Railway Fields, N4. They deliver conservation volunteer days across the borough on behalf of Haringey Council. They also support delivery of training opportunities as well as development of site-specific conservation action plans.

During 2018-19, TCV delivered 155 conservation days across parks in Haringey, involving over 1,200 volunteers. In addition, 6 training days were provided for volunteers on the following subjects: leadership training, leading guided walks, winter tree identification, environmental education volunteers, wildlife garden design and hedgelaying.

At Downhills Park, TCV delivered 3 conservation days involving 8 volunteers from the local community. Conservation activities included pond maintenance, dead hedge creation and vegetation management.

During 2019-20, TCV delivered 4 volunteer conservation days at Downhills Park

We are currently working with the Friends to identify, plan, and ultimately undertake a number of volunteer led improvements within the park, specifically around the Italian Gardens and the wilder woodland area.

New Community Engagement Officer and Volunteering Officer posts have been created and will be recruited in 2022

#### **7.1.2 Corporate volunteering**

Haringey Council actively supports companies and corporate volunteers within our parks and green spaces. Corporate volunteering provides an opportunity for employees to be involved in a different experience whilst supporting our management and improvement of green spaces.

During 2018-19, TCV supported 14 corporate volunteer days across the borough with tasks ranging from habitat creation and vegetation management, to creating countryside furniture and nature trails. Additional corporate volunteer days were delivered at parks across Haringey, facilitated by Friends groups.

Specific opportunities for corporate volunteers are included within the site Conservation Action Plan (section 8.4) to ensure that the sessions support wider management of the site whilst providing an engaging and rewarding opportunity for the volunteers.

## **7.2 Haringey Friends of Parks Forum**

The borough-wide Haringey Friends of Parks Forum was set up by Friends groups as an independent network in 2002. It is a coalition of over 40 Friends of parks groups and is committed to protecting and improving open space within the borough. The Friends of Parks Forum meets six times a year.

The Forum provides an opportunity for Friends Groups to work together for the benefit of Haringey's green spaces and green space users. The Forum's ['What We Do and How We Do It'](#) document describes the work of the forum and of individual friends' groups.

Amongst other things the Forum has been effective in lobbying and campaigning for:

- better planning policies as they affect open spaces
- more ambitious and effective open space standards
- greater levels of on-site staffing
- giving support to individual Friends' groups

Friends Groups communicate and co-ordinate through the Forum's email list. The Friends Groups liaise closely with all council park services and have been key agents in helping to bring in millions of pounds in external funding to improve facilities for local people.

Over the years they have worked with the Council on achieving Green Flag status for many parks and open spaces. The Forum is supported by the Council and park officers attend a session during the Forum's meetings to take note of each local Friends group's issues, and to discuss wider issues of common concern. The Council is publicly committed to active partnership working with Friends groups and the Forum. Minutes of all Forum meetings are published on the Forum website.

The Forum also works with Haringey Federation of Residents Associations and the Haringey Allotments Forum. It also links up with similar grass-roots residents' Forums and networks throughout the UK through the London Friends Groups Network and the National Federation of Parks and Green Spaces.

## **7.3 Friends of Downhills Park**

Established in 1999, this is one of the original parks friends groups in Haringey.

Downhills Park Friends Group has become a very important link between Haringey Park Services and the local community. Members have been instrumental in helping to improve the facilities within the park and in helping to obtain funding.

The Friends support and participate in bulb and tree planting sessions, the annual Art in the Park festival and various other activities.

The Friends have a website [www.downhills.org.uk](http://www.downhills.org.uk)

The Group functions through an elected committee of officers which include the Chair, Vice Chair, Secretary, Treasurer and ordinary members as well as ad hoc or permanent sub-committees established under the Constitution. The group meet formally in the Pavilion Café 4 times a year throughout the year.

Friends Groups across the borough do a huge amount of work and put in thousands of hours of volunteer time each year to:

- Help develop maintenance and management plans for our parks and green spaces
- Raise funds for improvements needed
- Prevent inappropriate development in parks and green spaces

- Plant trees, shrubs and flowers and help create play areas, seating etc
- Conduct regular walkabouts with parks staff and produce maintenance updates
- Organise activities that encourage local residents to safely use their local open spaces, including festivals involving hundreds of local people

#### **7.4 Other community involvement**

The café has made a significant contribution to the community cohesion within the park, acting as a hub and a venue for community meetings, as well as coordinating Arts events, providing children's toys and play equipment free of charge.

Tennis for Free – a local charity, host free tennis training events for local users during the summer holiday period

## 8. Conservation and Heritage

### 8.1 Biodiversity and the Biodiversity Action Plan (BAP)

The term biodiversity refers to the variety of life around us, including plants, animals and the ecological interactions that take place in our environment. Haringey supports a wide diversity of wildlife and habitats ranging from woodland and wildflower meadows to ponds, streams and wetlands.

Haringey's Biodiversity Action Plan (BAP) is currently under review. During 2019-20 a new BAP will be produced, aligned with the new Parks and Open Spaces Strategy. The new BAP will include detail on priority habitats, development of high value ecological corridors and the integration of biodiversity conservation into wider council initiatives.

Priorities within the BAP will help support updating or developing Conservation Action Plans for parks in Haringey including Downhills Park. See section 8.4

### 8.2 Habitat representation and nature conservation interests

Downhills Park covers 12ha ha of green space with a range of habitat types represented. Table below sets out the different types of habitat.

Table: Habitat types in Downhills Park

Habitat type*	Coverage (%)	Coverage (ha)
Amenity grassland	63.6%	7.61ha
Scattered trees	21.5%	2.57ha
Bare artificial	5.5%	0.66ha
Shrubbery	5.3%	0.64ha
Semi-improved grassland	2.3%	0.27ha
Non-native hedging	1.1%	0.13ha
Other (including standing water)	0.7%	0.09ha

Note: Habitat type defined as per the London Survey Methodology. See [www.gigl.org.uk](http://www.gigl.org.uk) for information.

Of key nature conservation interest is the diverse number of habitats available to local wildlife. These include the pond and bog garden, the central area of woodland, perimeter shrubs and avenues of mature trees. The formal garden of bedding plants provides a good source of nectar for insects in the north of the park whilst in the south there is a wildflower meadow and orchard area.

### 8.3 Designation status

Natural England and Local Authorities have a system of designating greenspace depending on certain characteristics and their value - locally, regionally and nationally. Downhills Park is:

Designation	Information
Local SINC (Site of Importance for Nature Conservation)	6.6ha of Downhills Park (not including playing fields area). The park has excellent tree cover including in places forming a woodland structure over dense shrubberies. Native species, including hornbeam, hawthorn and oak, predominate.

There are additional designated sites close to Downhills Park:

Site	Area (ha)	Location	Designation
Lordship Lane Recreation Ground	12.12ha	Directly North of site (14 metres away)	Local SINC (Site of Importance for nature conservation)



Chestnuts Park	5.16ha	South of site (330 metres away)	Local SINC (Site of Importance for nature conservation)
----------------	--------	---------------------------------------	---

#### 8.4 Conservation Action Plan (CAP)

Conservation Action Plans (CAP) provide a framework for ongoing management of sites for their biodiversity value. They provide guidance on conservation actions and activities that can be carried out throughout the year and form a basis for the conservation work of TCV, Friends groups and other community organisations.

CAPs detail site specific opportunities as well as supporting borough wide conservation efforts and requirements, such as contributing to habitat creation targets or demonstrating the positive management of SINC.

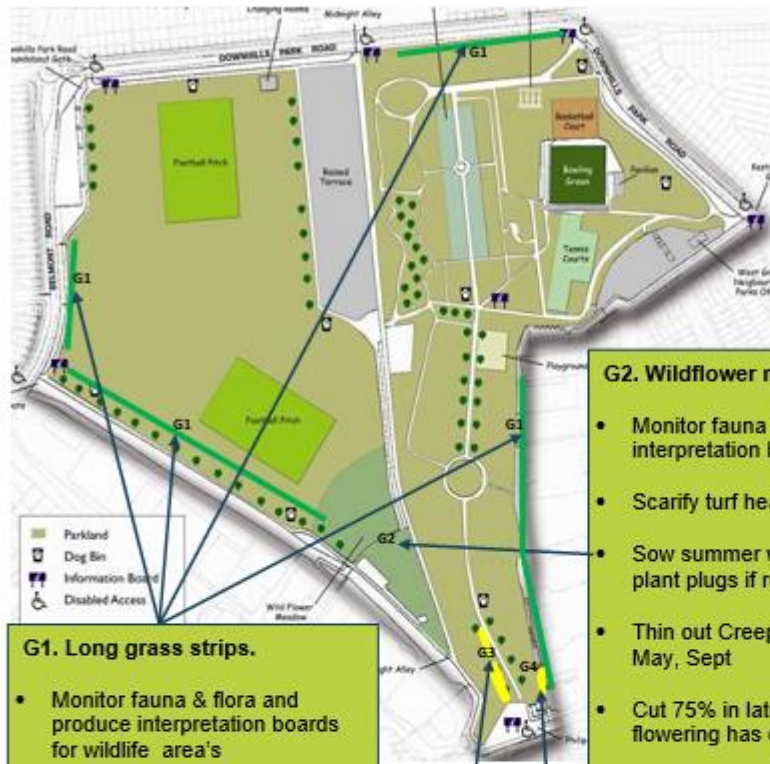
With the development of a new Biodiversity Action Plan during 2019-20, existing CAPs for parks will be updated to ensure they are aligned with the new BAP. They will detail conservation actions and requirements, including maintenance, enhancement opportunities and potential future projects.

The Downhills Park CAP is set out below; This continues to form the basis for conservation activities within the park and will be updated to reflect new priorities, actions and projects.

To date, key actions delivered under the existing CAP at Downhills Park include:

- Woodland bulb planting
- Monitoring of wildflower area and planting of fruit trees
- Replacement of pond liner and pond area maintenance

## Grassland Habitats



**G1. Long grass strips.**

- Monitor fauna & flora and produce interpretation boards for wildlife area's
- Allow 2 metre wide strip of no mow long- grass border and introduce wildflower perennials
- Cut 75% in Sept/Oct when perennial seeds have set and the remaining 25% in March/April.

**G3. Grass Mounds Spring Bulbs**

- Scatter bulbs over mounds and plant in situ: Oct/Dec
  - o Winter/spring flowering Crocus.
  - o Snowdrops.
  - o Anemone nemorosa.
  - o Primroses
  - o Daffodils
- Monitor Fauna and flora. On-going
- Mow between May and Oct

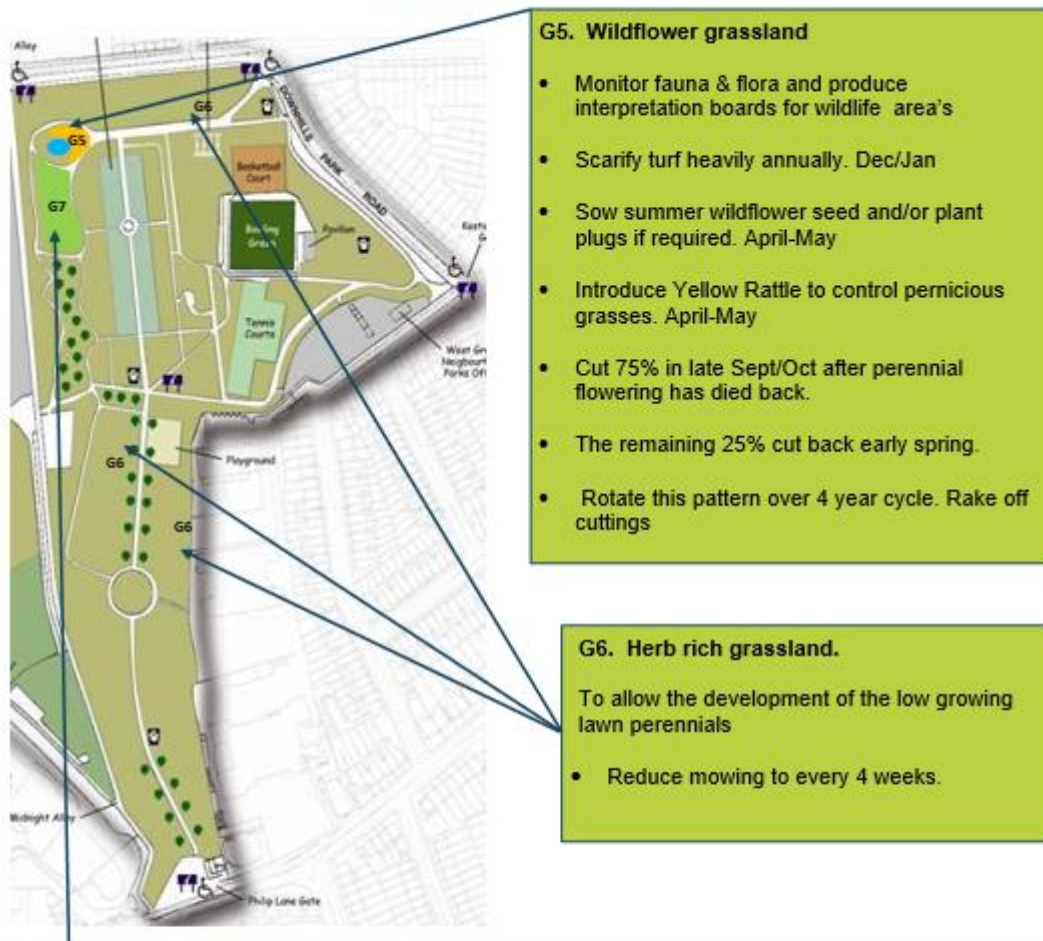
**G2. Wildflower meadow**

- Monitor fauna & flora and up-date interpretation board
- Scarify turf heavily annually. Dec/Jan
- Sow summer wildflower seed and/or plant plugs if required. April-May
- Thin out Creeping Thistle by 75%. March-May, Sept
- Cut 75% in late Sept/Oct after perennial flowering has died back.
- The remaining 25% cut back early spring.
- Rotate this pattern over 4 year cycle. Rake off cuttings
- Explore the possibility of developing a pond.
- Cut and remove Dock before seeding in July/August.

**G4. Grass Mound woodland bulbs and perennials.**

- Scatter bulbs over grass areas under the trees and plant in situ: Oct/Nov
  - o Winter/spring flowering Crocus.
  - o Snowdrops.
  - o Bluebells
  - o Primroses
- Reduce mowing to every 4 weeks. Raise cut height to 5-7cm
- Mow between May and October

## Grassland Habitats



- G5. Wildflower grassland**
- Monitor fauna & flora and produce interpretation boards for wildlife area's
  - Scarify turf heavily annually. Dec/Jan
  - Sow summer wildflower seed and/or plant plugs if required. April-May
  - Introduce Yellow Rattle to control pernicious grasses. April-May
  - Cut 75% in late Sept/Oct after perennial flowering has died back.
  - The remaining 25% cut back early spring.
  - Rotate this pattern over 4 year cycle. Rake off cuttings

- G6. Herb rich grassland.**
- To allow the development of the low growing lawn perennials
- Reduce mowing to every 4 weeks.

- G7. Grass Scrubland**
- Monitor and record plant species
  - Mow 1.m strip along footpath edge. Every 4 weeks
  - Plant native flowering perennials such as
    - Crane's-bill
    - Silver weed
    - Spear Thistle
    - Rose bay Willow herb
    - Wild Carrot
    - Field Vetch
    - Sainfoin
    - Golden Rod. March-May
  - Cut 75% in Sept/Oct when perennial seeds have set and the remaining 25% in March/April. Rake off cuttings

Meadow & Grass Management Timeline										
Activity	Plant and Sow wildflower perennials and seed	Scarify wildflower meadow	Cut summer flowering meadow and long grass strips, rake off cuttings	Control Creeping Thistle and other ruderals	Bulb planting	Mowing naturalised bulb area's	Mow 1.m strip along footpath edge every 4 weeks	Monitor and record fauna and flora and interpretation boards for wildlife area's	Reduce mowing to every 4 weeks. Raise cut height to 5-7cm	Cut a 2 m wide grass path and mow regular
January		G2,G5								
February										
March			25%, G1,G2,G5,G7	G2, G5			G7		G6	G2
April	G1,G2,G5,G7		25%, G1,G2,G5,G7	G2, G5			G7		G6	G2
May	G1,G2,G5,G7			G2, G5		G3,G4	G7		G6	G2
June						G3,G4	G7		G6	G2
July						G3,G4	G7		G6	G2
August						G3,G4	G7		G6	G2
September			75%, G1,G2,G5,G7	G2, G5		G3,G4	G7		G6	G2
October			75%, G1,G2,G5,G7	G2, G5	G3,G4	G3,G4	G7		G6	G2
November					G3,G4		G7		G6	G2
December		G2,G5			G3,G4					

### Woodland & Pond Habitats

**P1. Seasonal Pond & Wetland**

- Investigate condition of pond liner and replace if required. Use old liner if suitable to expand wetland area
- Keep marginal dominant plant species under control. Nov/Feb and June/Aug
- Monitor and record frogspawn, toad spawn and adult amphibians in the pond. February /May
- Monitor water level and top up in long dry periods
- Accumulated silt should be dug out, clearing only a part of the pond in a season. Nov/Jan
- Monitor the amount of plants covering the pond. Remove excessive growth in June/Aug.
- Remove any rubbish from the pond as soon as it is noticed
- Maintain fence, gate and dipping platform. On-going

**W1. Woodland**

- Monitor shrubs and trees.
- Crown-lift and lightly thin out to allow in more light if required. On-going. Dec-Feb
- Monitor and record herb layer
- Install Stag Beetle **Loggeries**
- Under plant trees and shrubs with beds of woodland perennials **in Oct.** March/May
  - Lesser Celandine.
  - Bluebells
  - Dog Violets
  - Woody Sage
  - Woody Spurge
  - Wood Cranes-bill
  - Ramsons
  - Common Cow-wheat
  - Red Campion
  - Stinking Iris
  - Sweet Violet
  - Pendulus** Sedge
  - Opposite-Leaved Golden Saxifrage

**W2. Woodland Pastures**

- Scatter bulbs over lawn areas and plant in situ. Oct/Nov
  - Winter/spring flowering Crocus.
  - Snowdrops.
  - Anemone **nemorosa**
  - Primroses
  - Daffodils
- Monitor Fauna and flora. On-going
- Mow between May and Oct.

Wetland Management Timeline								
Activity	Observe water levels and top up with rain water if necessary	Remove excessive marginal plant species	Remove accumulated silt from 30% of the pond. Rotate over three years	Remove excessive pond plant species to maintain a 30% clear water surface	Monitor and record aquatic fauna and flora	Remove rubbish from pond and enclosure	Maintain fence, dipping platform and gate	Replace pond liner & expand wetland area
January								
February								
March								
April								
May								
June								
July								
August								
September								
October								
November								
December								

Woodland Management Timeline						
Activity	Plant bulbs	Prepare beds and plant under plant trees with beds of Woodland perennials	Monitor Fauna and record Flora	Mow. Raise cut height to 5-7cm	Tree pruning work. Use cuttings to make loggeries	Building stag beetle loggeries
January					W1	W1
February					W1	W1
March		W1,W2				W1
April		W1,W2				W1
May		W1,W2		W2		W1
June				W2		W1
July				W2		W1
August				W2		W1
September				W2		W1
October	W1,W2			W2		W1
November	W1,W2					W1
December					W1	W1

## 8.5 History

Downhills was a big house, first built before 1728, and rebuilt allegedly in 1729 or 1730, but more probably shortly before 1789. It was sometimes confusingly called Mount Pleasant; there were two other, later, big houses called Mount Pleasant further to the east. Downhills stood at the top of the hill, in the largest private park in Tottenham, and approached by a south drive, now part of Downhills Park Road, and a grand north avenue of trees. The Townsend family owned the land from 1763 to the 1890s. (A statement in the Victoria County History that the British Land Co. bought it in 1881 is wrong, although that company rented some land from the Townsends and also seems to have bought land further east).

We don't know who laid out the grounds, though by 1789, when a banker called Rowland Stephenson lived here, they included fishponds (probably some on the site of the present pond, and possible medieval moat, in Lordship Rec). The grounds proper then covered 10 and a half acres (about four hectares), and included a garden, plantations, shrubberies and a farmyard. Much of the garden remains. Henry Hare Townsend, who lived here from 1823 to 1826 – the only owner to reside, other occupiers being tenants – and is said to have extended the house, may have planted some more of the ornamental trees.

The house stood at the north-east corner of the present park, with, by 1864, outbuildings to the west. Beyond them were a pond with a fountain, a croquet lawn and thatched arbor, and a wood with wandering paths and an ice house. On the south front were a terrace, with balustrades and a raised mound, and wide lawns, with cedars. Between the wood and the lawns were formal Italian gardens, with a fountain in the middle, and a shrubbery/rockery. South of the shrubbery was a hornbeam avenue. By 1890 there was also a gardener's cottage, but we don't know where it was.

The last tenant of Downhills house, Bertha Cummins, and her gardener, Frank Woolmington, left between 1897 and 1899, and some of the estate was sold for building in 1899. After a campaign by local residents, Tottenham Urban District Council bought the house and grounds in 1902. It demolished the house and incorporated the gardens into a new park, opened to the public in 1903. It bought nearby fields and extended the park southwards, to cover 30 acres by 1905. On the west, it straightened the boundaries, made a recreation ground, and laid out Midnight Alley between rec and park.

The council kept the terrace, the woods, the hornbeams, the Italian gardens and fountain, and the croquet lawn and arbour. It restored or created the rockery, and improved [the swan pond](#). Between 1902 and 1913 it built a superintendent's house, a conservatory, a bandstand in the recreation ground, and a children's playground. In the 1920s it created tennis courts and a bowling green, with a clubhouse. By 1938 it had built a pavilion in the rec next to Midnight Alley, and planted plane trees next to the bandstand.

After 1939 many features were demolished or destroyed: the fountain in the Italian gardens by 1947, the conservatory between 1962 and c. 1980, and by then also the pavilion, the bandstand, the swan pond, the thatched arbour, the superintendent's house, and many of the hornbeams.

Haringey Council built new children's play facilities in the 1980s and 2002, and in the 1980s planted the bandstand site with trees. The old playground became a wildflower meadow in 2001. The bowling club closed in its 100th year, and the clubhouse was demolished about 2007. In 2010-11 a cafe was built on the site.



Postcards of the rockery area in the 1910's

The park was laid out in a fairly formal style, with a lot of highly maintained flowerbeds dominating the central areas of the park (the wooded hillside and what are the current rugby pitches remained wild and informal).



Above; Italian Gardens 1934



## 9. Marketing and Communications

### 9.1 The marketing approach

Marketing Downhills Park involves more than simply publicising and promoting the park, it also involves listening to the users of the park. Our main aim is to put the needs and concerns of stakeholders, park users and residents at the centre of business marketing approach.

This section outlines how facilities and activities at Downhills Park are promoted and publicised and how users are positioned at the centre of the business.

### 9.2 Websites

[www.haringey.gov.uk/greenspaces](http://www.haringey.gov.uk/greenspaces)

The Haringey website contains extensive information on the borough's parks and open spaces, including Downhills Park. Information such as location, facilities and transport links for all Haringey parks and open spaces is available.

Policy information such as the Parks and Open Spaces Strategy which draws upon a range of information and seeks to establish a long-term vision for the borough's parks and open spaces is also available.

Information detailing the Council's partnerships with Friends Groups, The Conservation Volunteers and the Metropolitan Police is available online along with links to their websites.

Detailed information on the Green Flag Award with clear links to the Green Flag park pages within the LBH site can be viewed.

### 9.3 Social media

Social Media is now a regular way of communicating information between relevant parties and beyond. Haringey Council encourages all partners to use social media when communicating with communities.

[@haringeycouncil](https://twitter.com/haringeycouncil)

Haringey Council has a Twitter feed with just under 17,000 followers and is used as a two-fold approach: to proactively release live information to keep people informed and updated and respond to queries and complaints posted by others. This is checked throughout the day and provides residents and visitors with another communication channel.

The Council also uses other forms of communication such as Facebook and YouTube.

[www.facebook.com/haringeycouncil](https://www.facebook.com/haringeycouncil)

[www.youtube.com/haringeycouncil](https://www.youtube.com/haringeycouncil)

We also like to keep our resident's in the loop about the events that are taking place, and regularly ask that stakeholders and park hirers submit details about their event on the Council website for FREE, on our "What's On" listings section at [www.haringey.gov.uk/add-event](http://www.haringey.gov.uk/add-event)

### 9.4 Publications

Haringey People is the Council magazine, distributed six times a year by direct mail to all households within the borough. The magazine is produced by the Council's Central Communications Team which has editorial control over the content.

<https://www.haringey.gov.uk/news-and-events/haringey-people-magazine>

Several articles are published each year promoting the borough's parks as well as the work and events that key stakeholders and partners organise in parks throughout the year.

## 9.5 Notice boards

There are 4 notice boards located in Downhills Park. These are used to display information about the Friends and Council services and/or campaigns and events.

In 2014 a set of guidelines detailing how notice boards within parks should be used, maintained and what information can be displayed were issued with the expectation that all those with an interest and access to the notice boards will adhere to them.

In 2019 we developed a simple updateable poster that gives key contact information for council and other public services.

## 9.6 Campaigns

There are several national campaigns that Haringey Council support and promote via social media to highlight key issues affecting the borough's parks and open spaces. These include:

- Litter awareness campaign – encouraging users to dispose of their litter responsibly.
- Neighbourhood Watches – encouraging creation of new watches and increased membership.
- Trees Awareness – aimed at highlighting tree planting, tree identification, maintenance and removal and why. Along with National Tree Week.
- Volunteering and Friends Groups – promoting the work groups do, the benefits they bring to communities and encouraging volunteering.
- Love Parks Week – Encouraging stakeholders and Friends to promote and highlight the borough's parks and the events that they put on.
- The Big Lunch - supporting and promoting via social media the Big Lunch events happening across the borough, with focus on shared picnics in our parks and green spaces.
- The Great Get Together - supporting and promoting the national campaign to celebrate and promote community cohesion. We have streamlined the application form for this event to make it even easier for residents and park users to take part.
- Play Weekend - supporting the Play Streets initiative to encourage more active play within communities
- Playday - supporting the National Summer event to promote active play for children, young people and families. We work closely with our colleagues in the Active Communities Team to support community involvement and uptake.

## 9.7 Awards

In 2021 a total of 22 parks managed by Haringey Council were awarded Green Flag status, an external recognition for quality parks and open spaces. Priory Park was one of these.

Haringey Council is committed to the Green Flag scheme and is seeking to secure Green Flag status for at least 22 parks in 2022

## **9.8 Tree and bench sponsorship**

A sponsorship scheme is provided where members of the public can sponsor the planting of a tree or the installation of a bench in any Council run park and open space. This can be done to commemorate a loved one or an event.

The sponsor pays for the item and planting / installation, thereafter the Council maintains it subject to certain conditions. Should sponsors wish to, they can also help in maintaining their item.

## **9.9 Consultation and market research**

Haringey is committed to listening to the views and ideas of our stakeholders, park users and residents. Council officers attend the Friends of Parks Forum on a bi-monthly basis and maintain open channels of communication with key stakeholders. This is a good way to listen to concerns and engage in a constructive dialogue about individual parks.

When planning any new project work within parks, we make sure that key stakeholders are included in discussions from the beginning of the process and where possible hold open engagement sessions so we can listen to the thoughts, needs and concerns of the wider park community.

Budget cuts have hit our capacity to undertake regular surveys of park users. We include a question about satisfaction with parks in a borough-wide survey about environmental and waste services. The survey is commissioned by Veolia.

In 2018, four in five respondents to the survey (80%) said that they were satisfied or very satisfied with parks. This is slightly down from 2016 (81%) but in 2018 parks was the service with the environmental and waste service with the highest satisfaction rating.

We are aware that we need more knowledge of user satisfaction with individual parks and local people's priorities for their local park. We are planning to survey park users in 2019-20 to ensure that we are working in the right direction for users and in line with the priorities and outcomes of the Borough Plan.

## 10. Management

### 10.1 Setting the financial scene

The parks service gross budget for 2017/18 was a total of £5.1m with a revenue income of £4.5m and operated a net deficit of £600k. According to a survey by Parks for London this represents the second lowest operating deficit in London.

Whilst the service has borne its share of austerity related budget reductions, in recent years the service has chosen to focus on generating additional income to mitigate these reductions rather than impact service delivery on the ground. The service has managed this by growing the amount of income generated through:

- Increasing the number of park properties let
- Increasing the number paying a market rent
- Growing the number of commercial events
- Growing the level of filming income
- Increasing the range of services offered to other organisations

A breakdown of the 2017/18 revenue budget is set out below:

a) Revenue Expenditure – employees, premises, transport, supplies and services, third party payments, support services etc

a. Total parks expenditure	£5,142,184
b. Employees	£2,665,995
c. Premises related expenditure	£534,054
d. Transport related expenditure	£144,885
e. Supplies and services	£398,471
f. Third party payments	£662,463
g. Support services	£583,987
h. Capital charges	£152,330

b) Revenue Income - customer and client receipts, recharges etc

a. Total revenue income	£4,467,442
b. Customer and client receipts	£3,753,447
c. Recharges	£713,995

The council seeks to secure external investment from a number of sources. The council has its own ten-year capital strategy which currently includes over £11m of capital funding for parks. The services seeks to add to this sum and has secured further investment from the following sources over recent years:

Section 106  
 Community Infrastructure Levy  
 National Lottery  
 London Marathon Charitable Trust  
 Environmental Funds  
 Greater London Council  
 Event Income

Another important part of the overall funding mix is the fundraising carried out by Friends Groups across the borough. A wide variety of groups have been able to secure funds to deliver the priorities they identified. In 2017/18 the council directly invested the following amounts: -

c) Capital Expenditure – names of Capital schemes and expenditure on each scheme.

a. Park Asset Management	£377,288
b. Active Life in Parks	£263,477
c. Parkland Walk Bridges	£126,780

The Council continues to face significant financial challenges with many millions of pounds of savings to find over the coming years. A goal therefore for the service over the coming years is to maintain a stable budget position and continue with a strategy to generate additional income.

## 10.2 Management structure

The Parks Service sits within the Environment and Neighbourhoods Directorate and is overseen by the Director and the Cabinet Member for Environment.

The service is organised across Commissioning and Client Services and Operations business units.

Responsibility for the service falls to the respective heads of each business unit and they are supported by two commissioning managers and a parks manager.

The structure chart in section 4.1 shows the three core strands of the parks service which are:

- Park Operations Team – this team takes the lead on all day to day operational aspects of maintaining each green flag park.
- Active Communities Team – this team takes the lead on all event management, community activation in the park, partnership working and small grant awards. This team also secures sport related external funding
- Public Realm Team – this team takes the lead on asset management, investment in parks, policy development, nature conservation and arboriculture.

These three core teams are supported internally by colleagues across Community Safety and Enforcement, Planning Services, Regeneration, Adults and Children’s services on a variety of issues from homelessness, to new cycle routes, to improvement in existing green spaces and access and activities for older and young people.

External support for the service comes through the Friends Forum, our partners within the Police and The Conservation Volunteers alongside organisations such as Parks for London, Keep Britain Tidy and APSE.

## 10.3 Borough Plan 2019-2023

Following the local elections in May 2018 the new council and its partners have developed a Borough Plan setting out their vision and priorities for the next four years. Following extensive public consultation, it was agreed by Cabinet in February 2019.

The plan sets out the council’s priorities and the outcomes it seeks to achieve. Outcome 10 of the plan is for “a healthier, active and greener place”. The plan places importance on the role of parks and open spaces in delivering this outcome through four objectives.

Objective 10a is to “Protect and improve parks, open space, and green space, promoting community use”.

The Plan identifies several ways in which this will be achieved:

- Continue with partners to invest in our parks with over £15 million of improvements planned over the next five years, including new playgrounds and sports facilities.
- Develop a new Parks and Open Spaces strategy and consult with partners and local communities about how we will work together to protect, enhance and, where possible, extend green and open space in Haringey.
- Promote the use of our parks for a wide range of events and activities, including more community use.
- Plant more trees to make our streets and open spaces greener.
- Work with partners, including Environmental Community Groups, to maintain the borough’s watercourses, maximising their environmental and health benefits

Parks are also important in delivering Objective 10b of the plan. It is to “increase the levels of physical activity across the borough” by “creating healthier places, including parks and open spaces, in line with the Mayor of London’s Healthy Streets plan...”

However, we cannot achieve the priorities in the plan on our own. We trust that our partners locally and our residents will work together with us on achieving them.

The Borough Plan 2019-2023 can be found at:

[https://www.haringey.gov.uk/sites/haringeygovuk/files/borough\\_plan\\_2019-23.pdf](https://www.haringey.gov.uk/sites/haringeygovuk/files/borough_plan_2019-23.pdf)

#### **10.4 Parks and Open Spaces Strategy**

The last open space strategy was adopted in 2006.

Work has begun on developing a new strategy for parks and open spaces. The importance of a new parks and open spaces strategy is underlined by the explicit reference to it in Borough Plan 2019-2023.

The new strategy will build on the Parks Scrutiny Review that took place in March 2018. It will be co-produced with Friends, residents and councillors. As part of the process there will be a series of workshops and a period of public consultation.

The strategy will set out the ambitions for the service over the next 10 years. It will set out approaches to the maintenance, management and usage of parks. It will also set out clear policy positions on issues relating to parks and open spaces. In some cases new policies will need to be developed (such as security in parks and licensable activity).

The strategy will also describe the funding landscape. One key element of this will be to balancing revenue funding for the service against the agreed service standards. It will also provide a context to inform the long-term capital strategy including mapping out the external funding opportunities that can be used to the benefit of the service

The timetable is for a draft strategy to have been agreed, following public consultation by the end of 2019/20 and for Cabinet to agree the document in 2020.

#### **10.5 The Greenest Borough Strategy**

Haringey’s Greenest Borough Strategy responds to growing concerns around climate change. The Strategy sets out the Council’s and its partners commitment to tackle climate change under a number of key environmental policies to ensure achievement of their ‘green’ vision over a ten year period, and details what the council, its partners and the public can do to contribute.

More information can be found here: [www.haringey.gov.uk/greenest-borough](http://www.haringey.gov.uk/greenest-borough)

### **10.6 The Health & Wellbeing Strategy**

This strategy aims to reduce health inequalities through working with communities and residents to improve opportunities for adults and children to enjoy a healthy, safe and fulfilling life, through a number of key outcomes.

Those that specifically relate to parks include increasing physical activity and improving health and mental wellbeing.

More information can be found here: [www.haringey.gov.uk/hwbstrategy](http://www.haringey.gov.uk/hwbstrategy)

### **10.7 Finance and funding**

The revenue budget for Downhills Park sits within the overall Parks Operations budget.

Capital expenditure on parks and open spaces is planned at a borough level rather than at an individual park level. Match funding and other sources of external funding are sought wherever possible.

#### **10.7.2 Parks and open spaces Small Grant Scheme**

The Parks and Open Space Small Grant Scheme has been running for a number of years. The scheme offers community groups associated with parks and open spaces - such as Friends of Parks groups – to bid for funding of up to £1000. The funding is to support and develop community activity to help meet the council's aims and priorities for improving the borough's parks and open spaces. The budget available in 2018/19 was £40,000 and is expected to be £60,000 in 2019/20.

More information can be found here: [www.haringey.gov.uk/parkssmallgrants](http://www.haringey.gov.uk/parkssmallgrants)

#### **10.7.3 Events income**

At the end of 2013 a review of the parks events policy was conducted to inform and guide changes of how events would take place in the borough's parks, and also realign and invest income from parks events back into park improvements.

Income generated from events in parks and open spaces will be used in the first instance to meet the parks event income target in each year.

The application and booking fees will be utilised to fund the staffing costs of the booking and event management process.

Surplus income will initially be used to support and develop community led festivals and events in parks across the borough and offer training opportunities for community event organisers. £20,000 additional funding will be made available as part of the small grants scheme.

Any additional income generated will be ring fenced to be reinvested back into parks maintenance across the borough. Where significant sums of money are generated in individual parks the reinvestment needs of that park will be addressed first before redistributing the remainder of any funds to other parks.

All applicants to hold event will be charged a fee dependent on their event to cover the cost of the environmental impact on the park.

The environmental impact income will be kept separate from other income received in respect of events. This additional income can be used by the Friends of the park in which the event was held to address their immediate priorities for the park.



## **11. Improving Downhills Park**

### **11.1 Next Steps**

Section 12 contains an action plan that has been drawn up that sets out the actions to be taken over the next three years.

There are some aspirational one-off improvements that will require significant funding, such as investing in the refurbishment of the Tennis Courts. These will be contingent on identifying suitable sources of funding or resources both from within the council and from external sources.

Other listed actions are more affordable: any will be at nil or negligible cost but will require the energy and contributions of local organisations and individuals.

The plan also identifies scheduled activities that will occur on a regular basis. One of these is to update the management plan on an annual basis. This plan will next be reviewed at the end of 2020.

### **11.2 Summary**

Downhills Park is in a densely populated, deprived area of the borough. It benefitted from a programme of investment 10-15 years ago, but it has been a victim of the budget cuts and austerity of the last decade. That said it has maintained an active and involved Friends group and good stakeholder relations.

It will be these strong relationships with all stakeholder groups that will help to see the park continue to thrive as a well-used and well-loved resource.

## 12. Action Plan

### 12.1 Maintenance and scheduled work programme

This is a schedule of annual or routine tasks which are neither developmental nor fall within the remit of routine grounds maintenance or hygiene functions

Heading	Action	Frequency	Responsible	When?
Clean and well maintained	Site inspection to be undertaken	Quarterly	Parks Zonal Officer	Quarterly
Healthy, safe and secure	Play Inspection Company to inspect and risk assess all play and outdoor gym equipment	Quarterly	Play Inspection Company	Jan/Apr/ Jul/Oct
Management	Review the Park Management Plan annually	Annually	Parks Zonal Officer	Dec/Jan
Community Involvement	Lead 'Spotlight' meetings in the park with councillors and Friends	Quarterly	Parks Zonal Officer	Quarterly

### 12.2 Downhills Park development plan

This plans how the work we would like to carry out. Budget availability and more urgent unplanned work may mean that it cannot be fulfilled. Other repairs and general maintenance may have to take precedence. The content will be reviewed at least annually at the end of each calendar year.

Heading	Action	Priority (H/M/L)	Responsible	Approx cost	Funding source	Target completion
A welcoming Place	Support the Friends and Café to apply for funding to replace the container at the Keston Road entrance	M	PPO	£4000	Crowdfunding	September 2022

Heading	Action	Priority (H/M/L)	Responsible	Approx cost	Funding source	Target completion
	Clean and maintain notice boards at the main entrances	M	Parks operations	nil	N/A	As and when needed
	Add signage to bins support litter campaign 'Bin it or Take it Home'	M	PPO	N/A	Parks Capital and revenue	As and when needed
	Explore scope for having temporary or permanent public arts installations	L	PPO /Friends	TBC	Arts Council	September 2022
	Explore possibilities for regular Arts events in parks and park operating as a forum for local Artists and Arts based programme of projects	M	PPO / Friends	nil	various	June 2022
	Investigate project ideas for re-greening some of the borders with volunteers who could then maintain as community gardening projects	M	PPO / Friends	£5,000 - £20,000	Various grant sources	ongoing
A clean and well-maintained park	Continue programme of replacing, re-straightening and slat replacement on all benches	H	PZO	£3k PA	Parks Capital Budget	As and when budget allows
	Continue program of installing new recycling bins throughout the park	H	PZO	£2k	Parks Capital Budget	As budgets allow
	Establish coordinated volunteering programme to improve planting in borders and maintain long term	M	PZO	0	-	As resources allow
	Continue program of repairing/replacing paths	M	PZO	£150k	Parks Capital budget	As budgets allow
Healthy, safe and secure	Develop a costed plan for a new play area, work with users and community to identify best location(s) and fundraising strategy	M	PPO	0 for development -circa £150k for new play area(s)	Lottery / S106 / Capital Grants	ongoing

Heading	Action	Priority (H/M/L)	Responsible	Approx cost	Funding source	Target completion
	Review lighting and pathways strategy	H	PPO	0	-	Ongoing
	Continue to work with enforcement team to try and help street drinkers and homeless people using park and signpost them towards help	H	PZO	0	-	Ongoing
	Improve Tennis Courts with new surface, fencing and CardSpark booking system & install floodlights	H	CIL Project Officer	£100k	CIL	Summer 2023
	Continue to work with and support “Tennis for All” in their programme of bringing free tennis coaching for local people-ensure we “enable” their operating by supplying secure container and regular checking of courts and surface and any defects repaired promptly	H	PPO	0	-	Ongoing
A sustainable place	Draft Asset replacement strategy – ensure that we are developing and agreeing a palette of materials with the community and users which we can replace easily, but will be robust enough to stand the test of time, yet still elegant and in harmony with other elements	H	PPO	0	-	Spring 2022
	Develop models of horticultural sustainability in re-thinking of Italian gardens and approach to community gardening of this and other flower and shrub borders	M	PPO	TBC	TBC (various grants / Council Capital etc)	2022
	Review pesticides and herbicides policy – try to ensure we are doing everything we	M	PPO/Ops team	0	-	June 2022

Heading	Action	Priority (H/M/L)	Responsible	Approx cost	Funding source	Target completion
	can to avoid over use of chemicals within the park					
Community Involvement	Better partnership working- find ways / discuss systems for all partners, Friends Group, Rugby club, cafe operators, volunteering organisations to meet in a more regular forum (either a user forum or expanded "Friends of" meetings) to look at common goals and ways to work together on improvement projects for the park	H	/Stakeholders	0	-	ongoing
	Undertake project planning with friends and volunteering organisations to plan for restoration of Italian garden and ecology improvements to woodland strip	H	PPO/Friends/Ed Santry	0	-	June 2022
	Continue to support and encourage local groups to use the park for events	M	Events Team	0	-	-
	Works with adjacent schools to identify measures which might make it more appealing to their use (subject to discussion/agreement with friends )	M	PPO	0	-	Ongoing
Conservation and Heritage	Woodland belt – develop strategy and proposals for emphasising this as the "green spine" of the park.	H		0	-	April 2022
	Develop conservation action plan for the park in conjunction with users /stakeholders	H	PPO/Friends/Ed Santry	0	-	April 2022
	Undertake improvements to pond in top of woodland area	M	PPO/Friends/Nature Conservation Officer	20K	Small grants scheme / ecology grants	2022

Heading	Action	Priority (H/M/L)	Responsible	Approx cost	Funding source	Target completion
	Consider re-siting memorial bench away from area where street drinkers gather	H	PPO	3K	Parks Capital	As and when budget allows
Marketing and communication	Consider moving noticeboard or providing second notice board nearer to café area (as this is the most community active area)	H	PPO	3K	Council Revenue	As and when budgets allow
	Develop communications planner – set out all of the parks “offers” -particularly in relation to sports and activities and discuss/agree best forums to advertise what’s happening in the park (could be noticeboards but likely to include comms with local sports clubs etc)	M	PPO /Friends /leisure and events teams/Cafe	0	-	Ongoing
Management	Map all of the parks assets on the new Confirm database system	H	PPO	0	-	April 2022
	Test and evaluate efficiency of new Confirm system – review in 6 months’ time – does system improve reaction times to broken items etc-need to develop and refine this as an effective system rather than just “using it”	H	PPO	0	-	May 2022

