

Haringey SEND & AP Sufficiency Strategy 2023-2026





Introduction

In Haringey, we are committed to working in partnership with parents, carers, schools, settings and colleagues from health, social care and the voluntary sector to coordinate support for children and young people with SEND, so that they can fulfil their ambitions and thrive.

This means in practice that we look at their needs holistically across Education, Health and Care.

Our new SEND Sufficiency Strategy has been informed by a review of our current offer and supported by data, information from reviews and through engagement activities with partners, schools and with parents and carers. This Strategy has also been shaped by our needs data for children with SEND that include the SEN2 data return and comparator data from the Local Government Association.

We have listened to and worked with parents, carers and our partners in Haringey to best understand the mix and range of services we need for children across Education, Health and Care. This has been shared widely with a range of partners and we have added their inputs to the Strategy.

Our SEND Sufficiency Strategy builds on and develops the ambition contained within our SEND Strategy (2022-2025) and its five strategic priorities. Particularly Strategic Priority 2 'Wherever possible we will meet the Provision needs of Haringey's Children and Young People's in Haringey'. The Strategy also aligns with our written statement of action (WSOA) and our agreements with the DFE following the area inspection

of SEND services in July 2021 and Haringey joining the DFE Safety Valve Programme in 2023.

Therefore, this document will describe how, over the next three years we are committed to delivering more education, health and care services in Haringey, meeting the needs of our children at the earliest opportunity in the communities in which they live. This will mean more services are commissioned to support children in mainstream schools and that there are enough school places to meet the diverse needs of all children and young people living in Haringey and particularly those with SEND.

When considering what services we need for the future, we have analysed what our population needs and what our current demands are now. We have also benchmarked our analysis with the other 32 Local Authorities in London so that we understand ourselves better. Over the last 5 years, we have seen an increase in the numbers of children who have an EHC plan. In 2017, 3.1% of our child population had an EHC plan. This has risen steadily to 5% in 2023.

Considering our overall child population, we have approximately 120 children more on EHC plans given our cohort in total than the average London Authority. Haringey also has 360 more children on an EHC Plan than the England average based on our child population. We are currently supporting 2,664 children and young people with an EHC plan in June 2023.



Sufficiency priorities for the next three years 2023-2026

In Haringey we have identified that we want to provide a greater range of options for supporting our children and young people with EHC plans. We know from engaging with colleagues that we need a greater range of school places for our children in Haringey. Over the next three years we want to support more children in mainstream school places and resource provisions where it is in their best interests to do so. This is alongside expanding our in-borough special school places reducing the need for school places outside of Haringey.

Haringey has more children with EHC plans in special schools with Autism and Hearing Impairments than our London neighbours, but fewer places for children with complex needs than the London averages. We also have higher numbers of pupils in independent places as an overall percentage of children and young people with an EHC Plan. Moving forward, we want young people in the right school place here in Haringey in either a mainstream or specialist setting.

Haringey uses a range of Alternative Provisions for young people although the current configuration of these places requires further structured commissioning. Children with EHC Plans who are accessing an AP remain low in Haringey in 21/22, below both the London and England averages. Over the next 11 months we will be moving to a new model from the model for change.

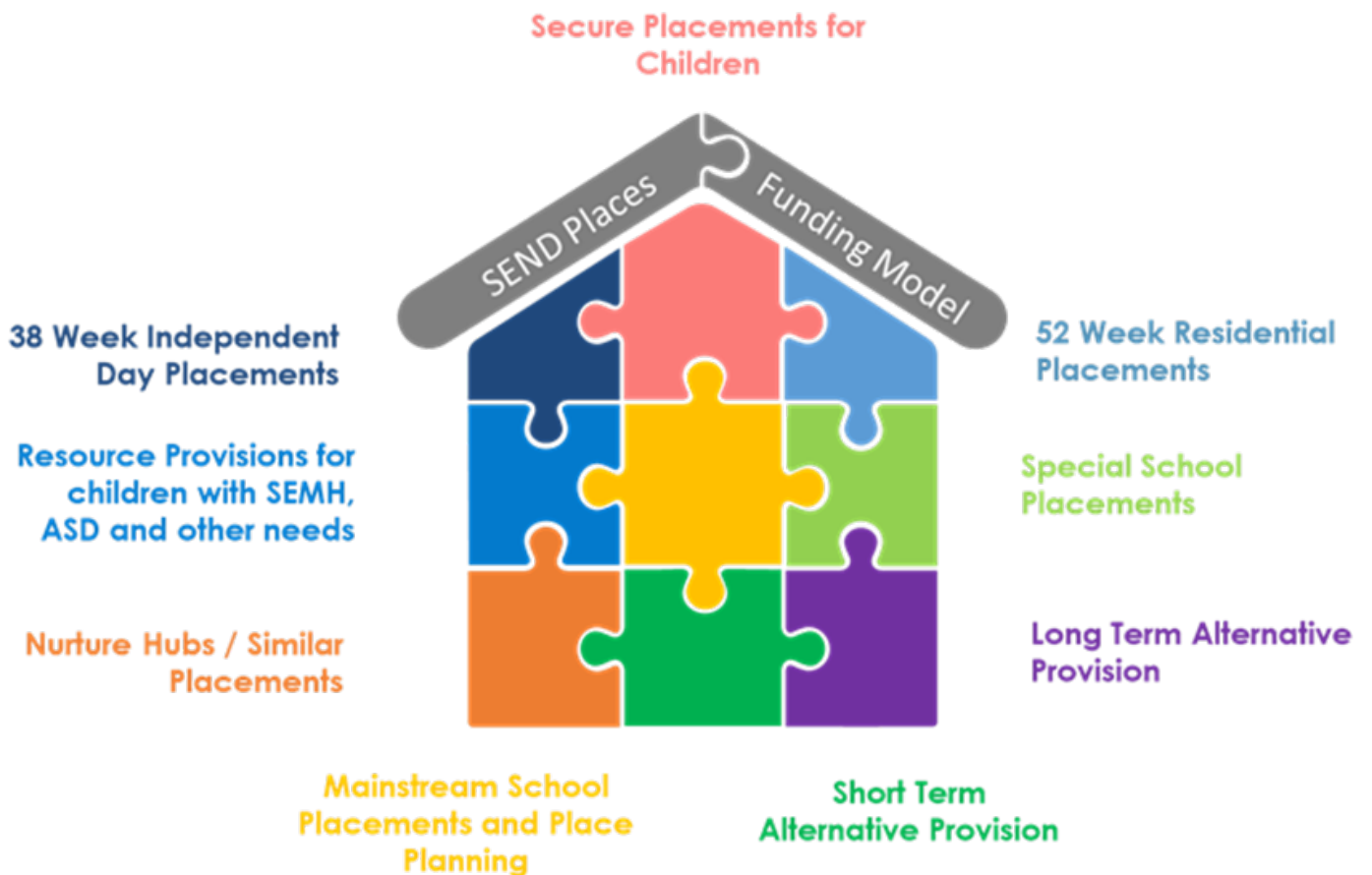
Haringey also support and commissions places for post 16 learners with SEND. The majority of this age group are educated in Haringey in our local colleges and FE providers and our cohort size is similar to other London and England Local Authorities. In Haringey we have a higher proportion of our EHCP population over the age of 19 than other London boroughs. This group is larger than our 16-18 cohort and includes a high number of Young People aged over 20 years old. A number of our 16-19-year-olds are currently NEET. We want to support them into employment and training.

Our priority is to create the right provisions across Haringey in our schools and colleges to provide children with the right support and to help them prepare for adulthood. We have developed a model to help us understand the differing services for our different groups of children in Haringey.

NHS Services for children in Haringey with SEND are commissioned by the North Central London Integrated Commissioning Board and Haringey Council. They commission a range of services both together through a S75 arrangement and in alignment with the needs of children in the Borough. We will be reviewing these contracts over the next 12 months to ensure they continue to deliver on our priorities. Demands on health services overall have increased sharply over recent years as the numbers of children with EHC plans and those with identified SEN Support needs has risen. This has led to challenges in terms of waiting times and access to services which is both a local, regional and national challenge.

A number of our health services continue to see children quickly and provide support and treatment for them within NHS recommended timescales for treatment. Our Speech and Language Teams and Autism Assessment Services both have longer waiting times than NHS recommended timescales. We know that this is a similar issue in other Local Authority areas and we are developing support services for young people who are awaiting assessments.

Our support services for SEND cover a range of services including short breaks, SENDIASS, and mediation services. We know that following the pandemic more families are requesting short break support.



Review of EHC funding bandings and top-ups

Analysis of our cohorts have found that there are pupils in Haringey's schools whose needs can be met in a mainstream place if additional support is put in place. A review of the funding available to support children and young people in mainstream school (known as 'top-up funding') is underway and is proposing a wider distributed model of funding as part of the safety valve agreements.

Over the next three years, the new funding model will increase greater choice for parents to access a mainstream placement for children in our schools with a fairer distribution of high needs block funding. Coproduction work across Haringey over the last year has been led by ISOS (an independent consultancy). This work was subject to a public consultation between 6th October and 1st December 2023 and is overseen

by a Steering Group made up of schools, parents, carers and Local Authority officers (including education psychologists and specialist teachers) . By 2026, a new model of funding will increase parental choice and provide schools greater flexibility to meet the funding needs of children in mainstream placements.

Further support for children and young people in mainstream schools will be offered via the new intensive support model for children with Autism. This is being provided by the Haringey Language and Autism Team (LAST). This project will provide support to some children with complex needs earlier, helping them to stay in their mainstream schools and reduce the numbers of some children who will need to go on and be assessed and supported by more specialist services.

Increasing in-borough resource provisions for children with Autism and SEMH

Haringey needs more resource provisions to help provide the width of placements needed for our children to provide suitable alternative options and to help provide sufficiency of placement options. We are committing to creating four new resource provisions delivering 93 new places for primary and secondary school aged children, who have autism and social, emotional and mental health needs (SEMH) and who require access to a mainstream curriculum.

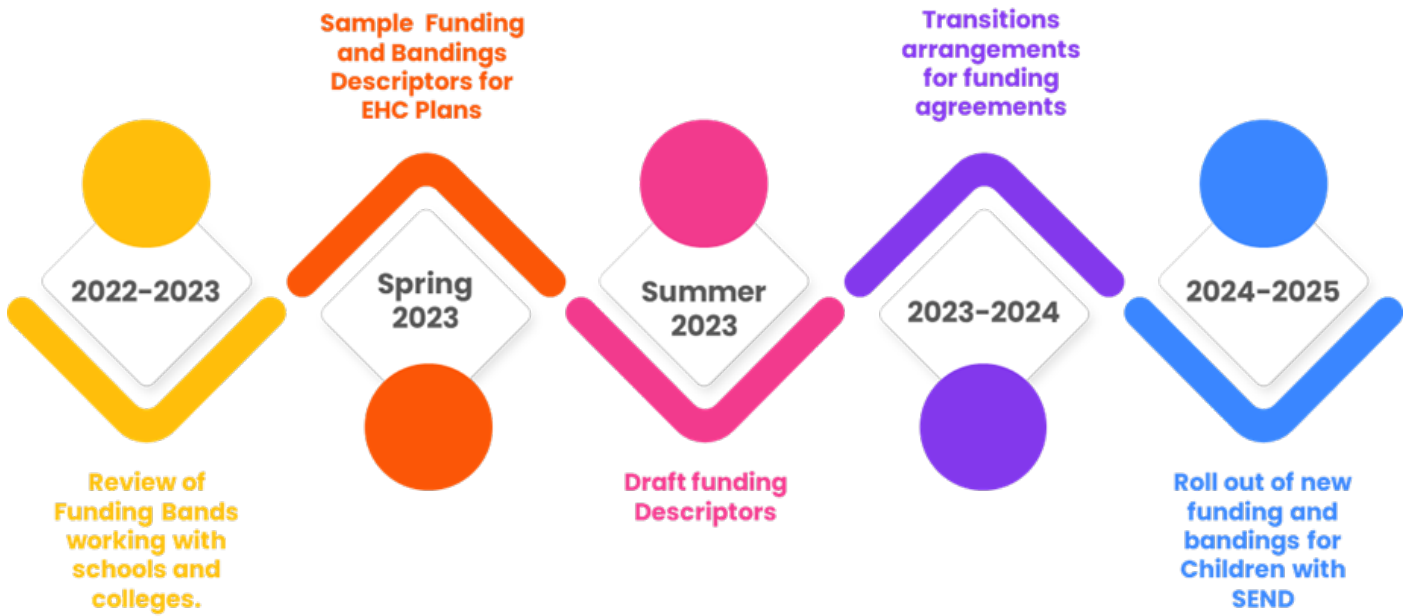
There are currently fewer opportunities in Haringey for children to access a resource provision than across other London Authorities. There are currently only 2 resources provisions in primary schools in Haringey, the Autism provision at Mulberry Primary School and the Speech and Language provision for children at Key Stage 1 at West Green Primary. We will build two new Resource Provisions for primary school aged children, one for children with Autism and once for children with SEMH needs. Haringey currently has no specialist provision for children and young people with SEMH needs.

Haringey currently does not have any secondary

resource provisions. The creation of two resource provisions for children with Autism and SEMH will support children to access an enhanced support place to meet their needs.

There are currently more children with Autism placed in secondary special schools than in secondary mainstream schools in Haringey. Creating a resource provision for secondary school aged children with Autism will help to improve parental choice and to support children who would benefit from access to a mainstream curriculum.

We are committed to provide a resource provision at secondary school for children with SEMH to support pupils who may benefit from a supported mainstream placement. Providing this resource will improve parental choice and reduce children accessing independent placements and special school placements.



Primary School RP
By 2026 we will create a new 15 place Resource Provision for children with Autism



Secondary School RP
By 2026 we will create a new 34 place Resource Provision for children with Autism



Primary School RP
By 2026 we will create a new 10 place Resource Provision for children with SEMH



Secondary School RP
By 2026 we will create a new 34 place Resource Provision for children with SEMH

Increasing Special School Provisions in Borough

Haringey has less special school provision proportionately than other London Boroughs as a percentage supporting children with education health and care plans. More of our children than both the London and England averages are being educated in Independent Non-Maintained Schools some of which are out of the Borough and are spread across Inner and Outer London.

The cohorts of children who attend a special school are different to other London and England boroughs. We have more children overall with Autism and Hearing impairments in our special schools than the London and England averages as an overall percentage of children who attend special schools due to the specific range of special schools in Haringey.

Haringey has lower averages of children in special

schools in Haringey with Severe Learning Difficulties, Profound and Multiple Learning Difficulties and Moderate Learning Difficulties compared to other London and English Councils. These children are both in mainstream schools and in independent schools.

Feedback from professionals alongside local projections and the comparator data of other London Councils demonstrates that there needs to be increased capacity in Haringey's special schools to support children who require a special school place.

Haringey intends to increase the numbers of specialist places working with our special schools alongside the creation of our new resource provisions to meet the needs of children in Haringey who are currently in independent schools and are going to school outside of Haringey.

Reduction in Independent Placements for children and young people with SEND

Haringey uses a range of independent school placements where this is the right setting for a child or young person, or where there is not sufficient capacity for our children and young people in maintained schools and settings or where children's faith needs are met by an independent out of borough school.

In Haringey, we have a higher rate of usage of these places than both the London and England averages. Of the total cohort of children with EHC plans 6.5% of children in Haringey attend one of these settings compared to 5.2% of pupils with EHC Plans in London and England.

By putting in place more access to funding in mainstream schools, an increased number of resource provisions and creating more in borough special school places, this will reduce the numbers of children who need to access an independent placement including, travelling out of the borough. Currently Haringey supports 203 pupils in an independent placement. The highest percentage of pupils who access these places have Autism, Speech and Language needs (SLCN) and Social, Emotional and Mental Health needs (SEMH).



Profound and multiple disabilities



Visual impairment



Specific learning difficulties such as dyslexia



Physical disabilities



Social, emotional and mental health difficulties



Autism spectrum condition



Hearing impairment



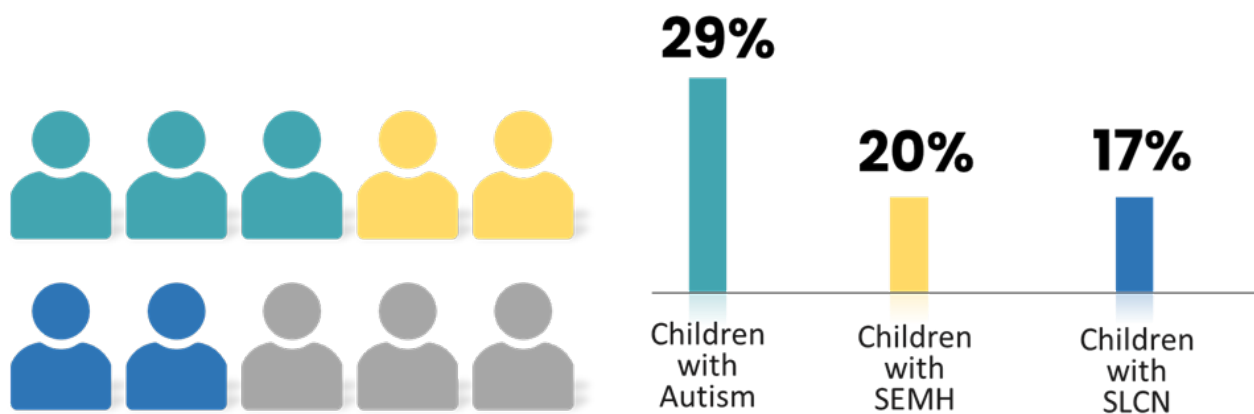
Learning disabilities



Speech, language and communication disorders



Primary needs of Children as a % of all EHC learners in Independent Schools



Reconfiguring Alternative Provision (AP) arrangements

Haringey uses a range of AP provisions for young people some of whom have unmet or undiagnosed SEND Needs or who are under assessment for EHCP's. In Haringey these are delivered through a step out arrangement for primary school aged children via Seven Sisters Primary School Nurture Hub and through the Haringey Learning Partnership for secondary school aged children where children are at risk of exclusion or have medical or other SEMH needs.

Children with EHC Plans who are currently accessing an AP remain below both the London and England averages for the total cohorts of children accessing these types of places. The numbers of children accessing an AP overall have been falling in Haringey over the last three years although there has been an increase in 2023, not just including those with EHC plans. Currently in Haringey, the main provider of Alternative Provisions, Haringey Learning Partnership provides other core services including outreach in mainstream schools, short term Respite, Hospital education & medical needs tuition as part of the Local Authorities statutory obligations under Section 19.

We intend to simplify the governance arrangements for Alternative Provision including introducing new management oversight replacing the model for change in Haringey.

We will be ensuring that the outreach offer, and respite offer provides early intervention and targeted support to prevent escalation of need through revised commissioning arrangements, we will support providers in the market to help deliver high quality AP that acts as a steppingstone to mainstream or specialist services within Haringey in a timely manner.

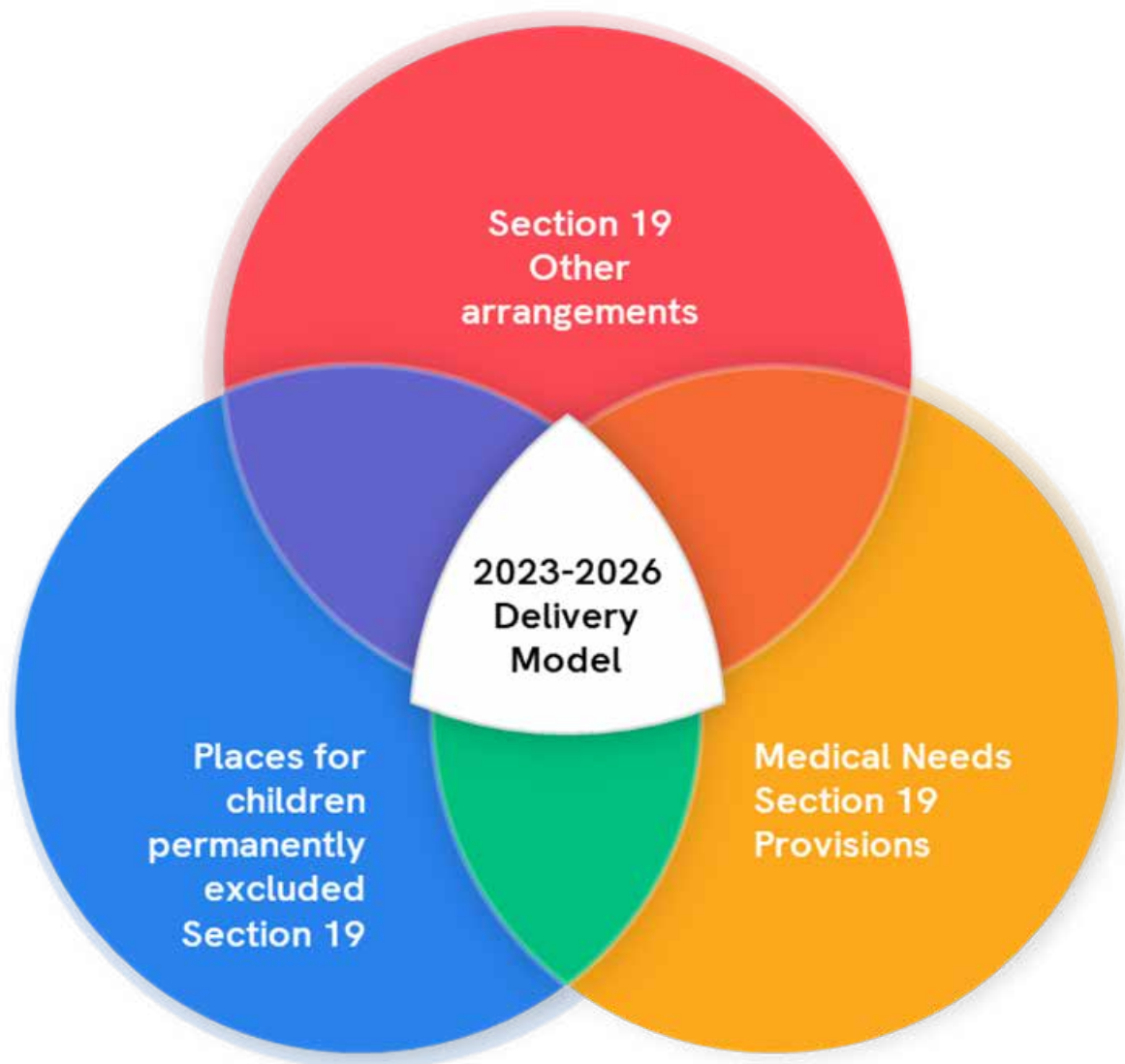
We intend to design and deliver new alternative delivery models to simplify and separate Section 19 arrangements. We will ensure sufficiency of appropriate provisions for children who require education under medical needs, permanent exclusion or other reasons. New commissioning arrangements are being put in place and a pathway of service redesigns is being rolled out from 2023.

Development work is needed with schools to embed the implementation of the Ordinary Offer, to promote inclusion and reintegration pathways for pupils with EHCP's, ensuring that pupils receive timely assessment and support in their mainstream settings from multi-agency services, to reduce the escalation of need resulting in referrals to alternative provision for pupils with unmet SEND.

Further development of the alternative provision offer is underway, to include commissioning specialist resource provision within secondary schools for Year 11 pupils who are new to the area, who may have ESOL needs, and to include the commissioning of local independent providers to ensure a diverse offer that meets local needs.

Haringey has also recently rejoined the North London Quality Assurance Partnership to enable the development of a local Alternative Provision Directory, enabling joint quality assurance of independent providers of alternative provision and working in partnership with neighbouring local authorities.

2023 -2026 AP Delivery Model



Supporting NEET Learners into employment, education and learning with a focus on 19-25 Learners

Haringey as part of our analysis have found that there are a high number of young people who are NEET aged over 19-25 and currently are not in education, employment or training. This cohort is disproportionately impacted where a young person has Autism.

Currently, there is a shortage of Supported Internships in Haringey. Several leading charities across England offer specific supported internships for children with Autism. Haringey is delivering a new project to provide supported internships for post 16 learners to help towards reducing the NEET numbers for this group of young people. Of the 110 young people who are NEET,

nearly a third have Autism and is the highest group of young people accounting for 40% of all learners in this group.

There is a cohort of young people who are 19-25 who are NEET who would benefit from the value of dedicated project work to support them into exploring further opportunities to get into education, employment and training. Support through annual reviews will help to identify opportunities for these young people and the project will aim to reduce the numbers of young people who are NEET in this age range.



Further support for children with speech and language needs

Some of our place-based services supporting young people with SEND require transformation and commissioning-based support to improve access to these services in Haringey.

Speech and Language Services are provided by the Whittington NHS Trust and supports over 2900 children across Haringey, that have Speech and Language needs at both a targeted and specialist level. Current waiting times for a child or young person to start treatment is below our local target of 95% of children starting treatment within 13 weeks. This is in part due to the increasing cohort size of children accessing SLT services which have increased by 30% since 2017.

Currently on average, 23% of our children will meet our target of 13 weeks waiting time (?) and a child on average will wait 20.7 weeks for their treatment to start.

A specialist project to redesign the support for children who need speech and language support has resulted in the delivery of a new graduated response to needs for children with speech, language and communication needs supported by new Language Support Assistants in Schools.

Support for children with Speech and Language Needs



Specialist Support in Speech and Language from health professionals



Extra Help from Early Language Assistants in Classrooms



Universal Support and wider support in schools

School Transport Support in Haringey

We are constantly evolving the way in which our school travel assistance services operate, to better suit the needs of our children and young people. Our principles include ensuring the safety of children and young people, sustainability and creating a cleaner environment, and promoting the independence and life skills of children and young people.

We have eight components in our School Travel Assistance Strategy that we are delivering over the next two years with a key focus on strengthening our travel assistance offer that promotes independent travel and supports preparation for adulthood. In line with the other priorities in this strategy, Our Sufficiency Strategy will help to reduce the level of transport taken by Children and young people outside of Haringey.

The development of greater flexibility in funding for mainstream schools, the development of in borough resource provisions, the expansion of in borough special school places, and reduction of out of borough independent places will all contribute to elements outlined in our School Travel Assistance Policies to provide suitable and safe travel assistance to learners in Haringey.

Supporting Access to Short Breaks for children with SEND

There are currently several gaps in the current allocation and uptake of care services to support families in Haringey. Challenges over the SEND Marketplace indicate that within Inner London there are gaps in the current marketplace for SEND short breaks services.

Haringey through its Short Breaks service have identified that there is a gap in these provisions coming out of the pandemic with a shortage of short break stays for weekend and school holiday placements. The gaps we have identified particularly impact children with complex needs and autism of which a number of these are for children in care.

Feedback from our Parent and Carers group (SEND Power) and our SENDIAS service, has indicated that there is currently not enough Personal Assistant capacity (PA's) in the inner London Area to meet demand for these cohort groups of children and parents. Feedback from these groups also indicate that, parents are unable to spend their personal budgets that they have been allocated for a short break.

New Placements are required to support educational placement stability for children, to help avoid additional moves through dedicated support. A scheme is required to support children on the edge of care in specific cases to support a family with key carer support to divert a family away from care where it is in their best interest to do so.

A business case to review the viability of these places will be published in early 2024 with a roadmap to improve access being published in the summer of 2024.

London Borough of Haringey

Mission Statement: *To provide suitable and safe home to school travel assistance arrangements for all eligible residents of Haringey, so they arrive to school ready to learn.*



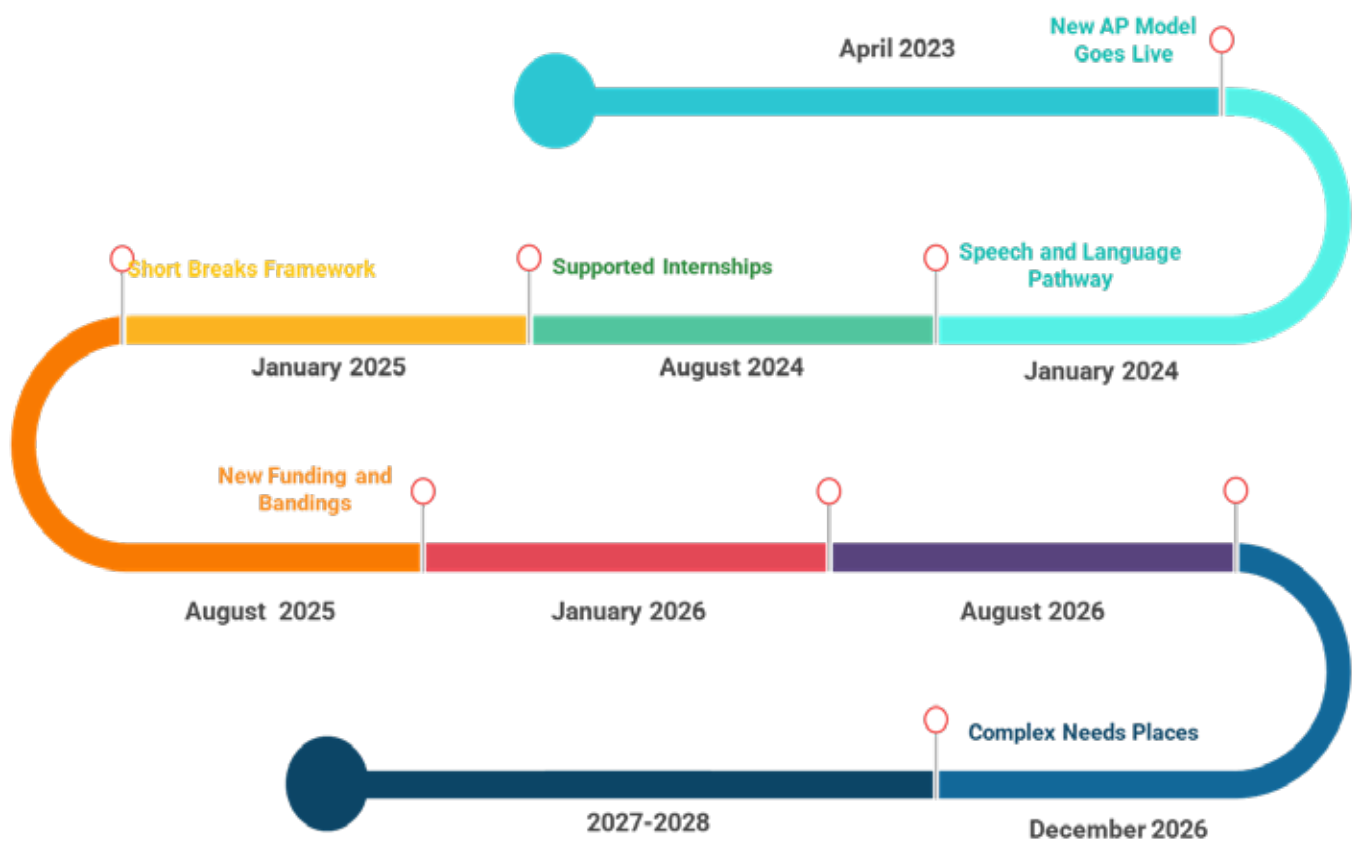
Roadmap to delivering the new services outlined in the Sufficiency Strategy 2023-2026

The eight areas with identified need contained within the Sufficiency Strategy will be delivered over the next three years and be supported through the actions contained within our written statement of action (WSOA) and our agreements with the DFE following the area inspection of SEND services in July 2021 and Haringey joining the DFE Safety Valve Programme in 2023.

The Programme of activity to support these activities in some cases has already begin and services will be rolled out across the next three years to support children with SEND and who may need an Alternative Provision (AP).

The actions contained within this Strategy will be overseen by the Start Well Board, SEND Executive and Safety Valve Steering Group.

Sufficiency Strategy Roadmap 2023-2026



Glossary of Key Terms in our Sufficiency Strategy

Academy

A type of school. Publicly funded independent schools that are free from local authority control. freedoms include setting their own pay and conditions for staff, freedoms concerning the delivery of the curriculum, and the ability to change the length of their terms and school days (see also MAT).

Alternative Provision

Education arranged by a local authority or school for pupils of compulsory school age outside of mainstream or special schools. This might be for pupils with behaviour problems, health needs preventing school attendance or those without a school place. It may include full or part time placements in pupil referral units, AP academies, AP free schools or FE colleges; provision in hospital schools and independent schools; and other provision such as home tuition services and voluntary or private sector providers.

Education Health and Care Plan

An EHC plan details the education, health and social care needs of a child or young person who has SEN or a disability, and also the support to be provided to a child or young person. It is written by the local authority after an EHC needs assessment of the child or young person has determined that an EHC plan is necessary.

Independent School

A school that is not maintained by a local authority.

Mainstream School

State school which can meet the needs of most children.

Resourced or Resource Provision.

Resourced provision within mainstream schools is where pupils are either withdrawn to a resource for specialist input, or teachers from the resource deliver specialist help to the child within the classroom. A resource provision usually has a specialist focus such as hearing impairment or autism spectrum disorder.

SEND Information, Advice and Support (SENDIAS) Service:

Special Educational Needs and Disabilities Information, Advice Service: Provides information and support to parents/carers whose children have special educational needs.

Short Breaks

Identified package of support to give parent/carers a break from caring. Short breaks can be overnight care for the child/young person with disabilities, daytime activities or a carer. Families may also be receiving support from the Children with Disabilities Service.

Special School

A school which is specially organised to make special educational provision for pupils with SEN.

Link to our Jargon Buster on the Local Offer

<https://www.haringey.gov.uk/children-and-families/local-offer/about-local-offer/local-offer-jargon-buster>

If you want this in your own language, please tick the box, fill in your name and address and send to the address below



BULGARIAN / Български

Ако искате това на Вашия роден език, моля, поставете отметка в квадратчето, напишете Вашето име и адрес и изпратете на адреса по-долу.

FRENCH / Français

Si vous le souhaitez dans votre propre langue, veuillez cocher la case, indiquez votre nom et votre adresse et envoyez à l'adresse ci-dessous.

GREEK / Ελληνικά

Αν θέλετε να διαβάσετε το παρόν στη δική σας γλώσσα, παρακαλούμε σημειώστε το τετραγωνάκι, συμπληρώστε το ονοματεπώνυμο σας και την διεύθυνση σας και στείλτε το στην παρακάτω διεύθυνση.

ITALIAN / Italiano

Se si desidera il presente documento nella propria lingua, spuntare la casella, inserire il proprio nome e indirizzo e inviare al seguente indirizzo.

POLISH / POLSKI

Aby otrzymać to w swoim języku, zaznacz pole, wpisz swoje nazwisko oraz adres i wyślij na adres poniżej.

PORTUGUESE / Português

Se desejar isto no seu idioma de preferência, assinale a caixa, preencha o seu nome e morada e envie para o endereço abaixo:

SOMALI / Soomaali

Haddii aad qoraalkan ku rabto luuqadaada, fadlan sax mari sanduukha, kusoo buuxi magaca iyo ciwaankaaga, kuna soo dir boostada hoose ee lacag la'aanta ah.

SPANISH / Español

Si quiere esto explicado en su propio idioma, por favor marque el casillero adecuado, ponga su nombre, apellidos y dirección y mándelo a la dirección indicada abajo.

TURKISH / Türkçe

Eğer bunu kendi dilinizde edinmek istiyorsanız, lütfen kutuyu işaretleyin, isminizi ve adresinizi yazın ve sonra aşağıdaki adrese gönderin.

ROMANIAN / Română

Dacă doriți aceste informații în limba dumneavoastră maternă, bifați căsuța, completați numele și adresa dumneavoastră și trimiteti detaliile la adresa de mai jos.

Please indicate if you would like a copy of this letter in another language not listed or any of the following formats and send to the address below.

Large print On disk On audio tape

Braille Another language _____

Name: _____

Address: _____

Please email SENDnewsletters@haringey.gov.uk to request your document.