

SEND

Haringey SEND and Inclusion Improvement Plan 2024-2025



Our vision, values and key priorities

In Haringey, we are committed to working in partnership to coordinate support, care and learning for SEND children, young people and their families so they can fulfil their ambitions and thrive.

We are proud of the quality of the schools and early years provision in Haringey: we know our schools and settings work hard to deliver good outcomes for children and young people – many children with SEND in Haringey achieve better outcomes than children with SEND nationally.

Our vision is that **'All of Haringey's children and young people achieve their potential'**.

Our shared, strategic outcomes for all children and young people in Haringey are:

- Best start in life: the first few years of every child's life will give them the long-term foundations to thrive.
- Happy childhood: all children across the borough will be happy and healthy as they grow up, feeling safe and secure in their family, networks, and communities.
- Every young person, whatever their background, has a pathway to success for the future.



Our vision, values and key priorities

Our Haringey [SEND strategy](#) provides the overarching framework and priorities for delivering improvement for children and young people with SEND.

SEND Strategy Priorities

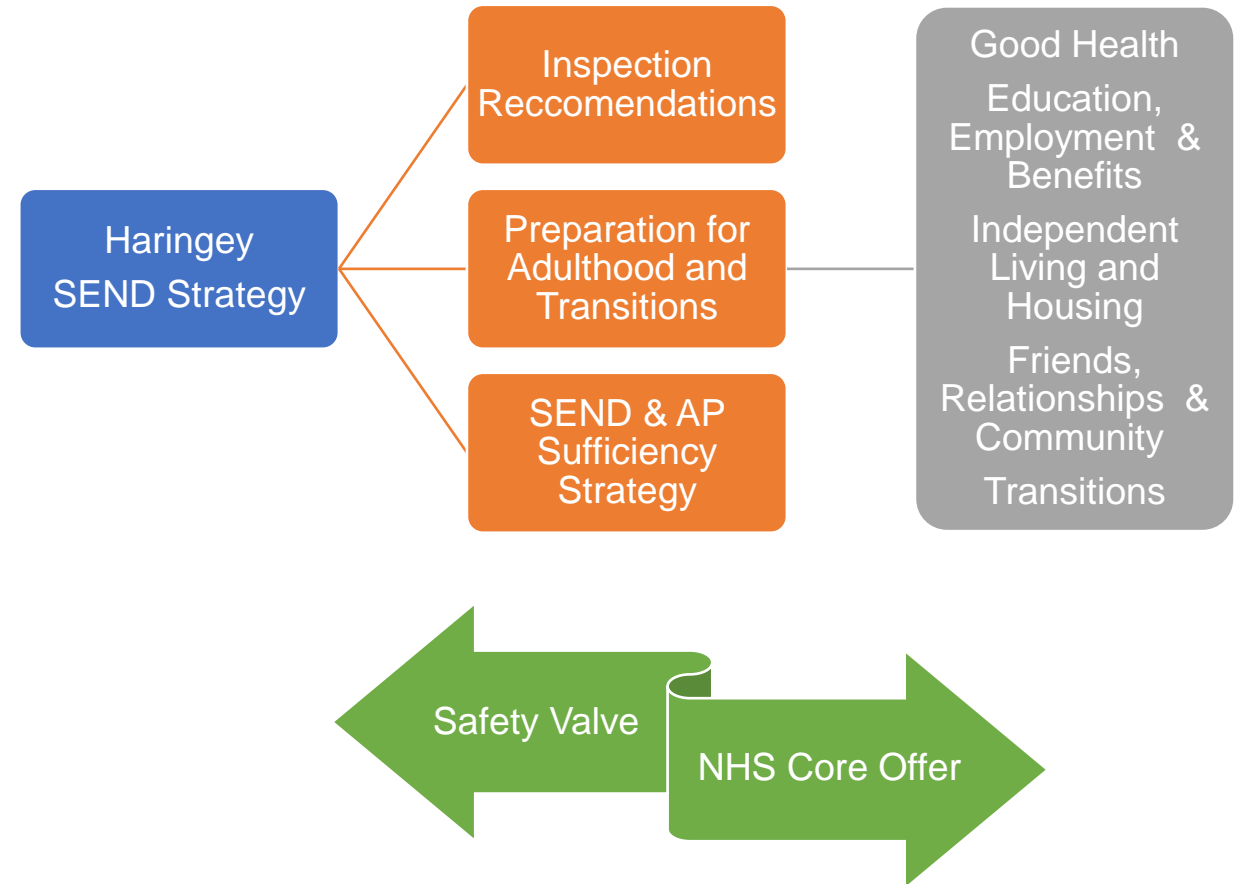
- **Priority 1:** We will support children at the earliest opportunity to access the intervention they need to achieve and thrive.
- **Priority 2:** Wherever possible we will meet the provision needs of Haringey's children and young people in Haringey
- **Priority 3:** We will deliver a Local Offer to children and families that allows them choice and access to services that meet their needs
- **Priority 4:** We will actively seek opportunities to work with our children, young people and families in a model of co-production
- **Priority 5:** We will prepare our children for their adult lives and support their transition



Interdependencies that underpin our plan

A range of other Haringey strategies and plans support our improvement priorities:

- Haringey's [Health and Well Being Strategy 2020- 2024](#) and [Joint Strategic Needs Assessment \(JSNA\) focus on SEND](#).
- Haringey's [Early Help Strategy 2021-2023](#)
- Haringey's [SEND and Alternative Provision \(AP\) Sufficiency Strategy 2022-2026](#)
- Haringey's [Preparation for Adulthood Strategic Action Plan 2022-2024](#)
- Haringey's [Autism All Age Strategy 2021-2031](#)
- Haringey's [Early Years Strategy 2023-2026](#)
- North Central London [CYP Mental Health and Emotional Wellbeing Plan 2022-24](#)
- Underpinned by national policy: [SEND and Alternative Provision Improvement Plan March 2023](#)



Our partnership governance arrangements

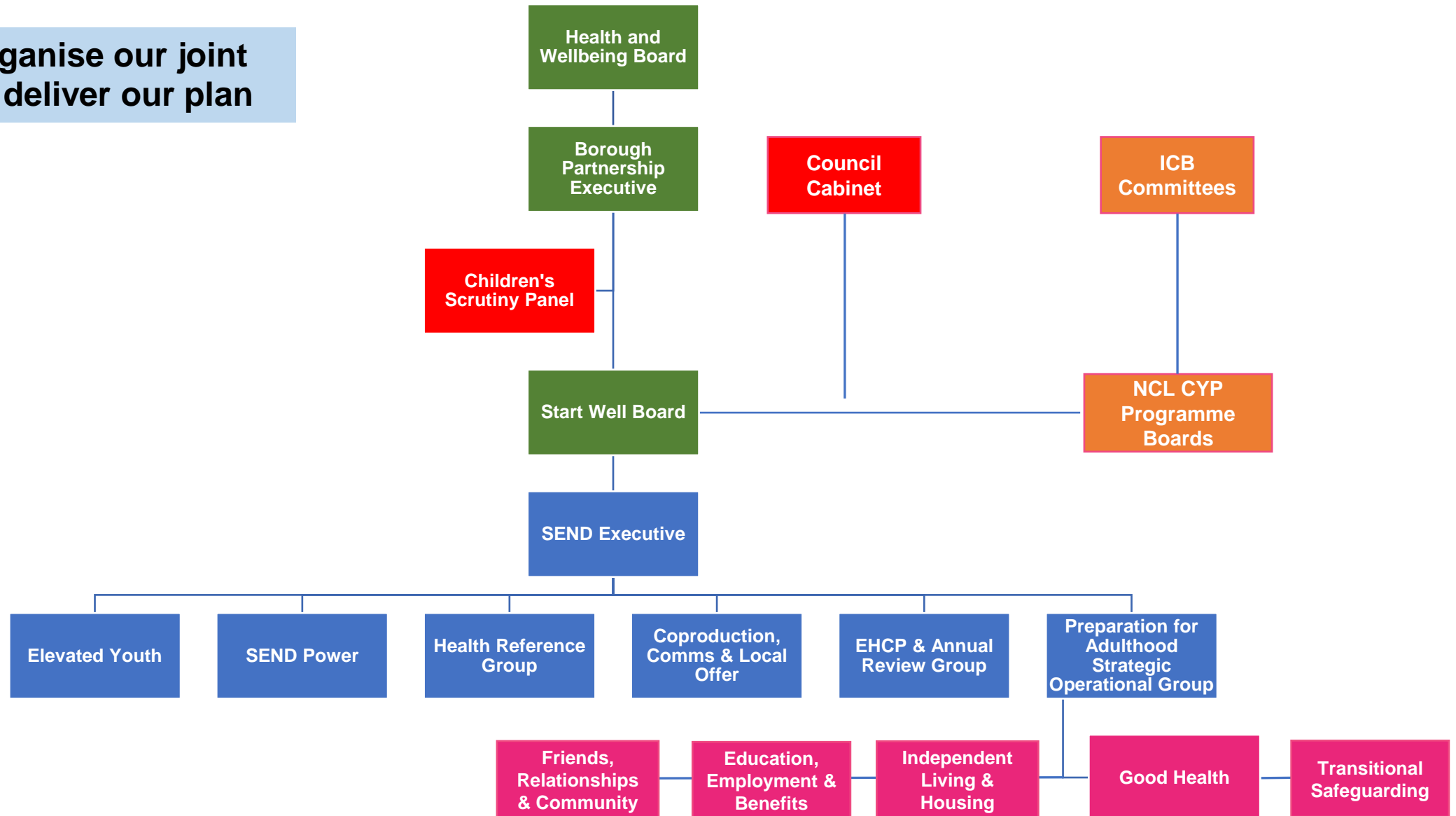
- The SEND Executive Board leads Haringey SEND.
- The **governance is well embedded and assured** by SEND Improvement Advisors and the NHSE regional team.
- Performance and **progress against delivery** plans are reported to the Board.
- **Sub-groups meet** regularly and deliver actions in the plans.
- Our Parent Carer Forum, 'SEND Power, ' supports and challenges the Partnership to improve, address issues, communicate and co-produce.
- Our SEND Youth Forum, Elevated Youth Haringey, advises the partners on what services young people want to see in the Local Offer for Children and Young People.

How we organise our joint working to deliver our plan



Our partnership governance arrangements

How we organise our joint working to deliver our plan



SEND Strategy Priority One: All young people with SEND in Haringey will receive timely support which enables them to achieve and thrive.

Ref	Action	Lead	Milestone	Impact measures	Milestone completion timescales				
					Mar 2024	June 2024	Sept 2024	Dec 2024	Year 2
1.1 Send Strategy SS8 (SS)	To ensure that our Family Hubs Programme has a comprehensive suite of services to provide early identification, assessment and support to families with emerging SEND needs	Head of Early Help & Prevention LBH Simone Common	<ul style="list-style-type: none"> a. Family hubs offer to include sessions for children 0-2 with emerging SEN needs (Dec 2024) b. Parents of children with emerging SEN needs supported to participate in the parent carer panels (June 2024) c. Work in the Home Learning Environment strand of the family hub offer targets children with emerging speech and language difficulties (June 2024) 	<ul style="list-style-type: none"> • SEND offer within each Family Hub • Number of CYP with SEND accessing FH 					
1.2 Safety Valve Project A.4 (SVP) Inspection Action (IA)	Improve quality and co-production within Individual children's EHCPs and Annual Reviews	SAT Service Manager, LBH Alena Lerari DCSO, LBH Dennis Scotland DCO, ICB Andrew Ralephata	<ul style="list-style-type: none"> a. Deliver Co-production and Annual Review training to SENDCOs/ education Psychologists / SEN Co-ordinators to ensure consistency of delivery across SEND Services. (by July 2024) b. Ensure delivery of Liquid Logic system to support better practice and improved Annual Review reporting and Performance within the Statutory Assessment Team by September 2024 c. Ensure all plans and Annual Reviews delivered within Statutory Timescales by December 2024 d. Ensure that Outcomes for children are SMART (September 2024) e. Ensure that all plans focus on Preparation for Adulthood.(September 2024) f. Ensure all plans and Annual reviews are coproduced (March 2024) g. Review our SEND Core Standards (June 24) 	<ul style="list-style-type: none"> • Amount of Training completed- measured in the Training completion log • Completion of Liquid Logic migration (service plan). • Timeliness and Statutory Compliance for EHCPs and Annual reviews (Data dashboard: EHCP7, P5D & P5G) • Co-production measures (Data dashboard: COM6, COM7, EHCP2, EHCP 4, EHCP8) • Publication of new standard for working with parents and carers (July 2024) 					

SEND Strategy Priority One: All young people with SEND in Haringey will receive timely support which enables them to achieve and thrive

Ref	Action	Lead	Milestone	Impact measures	Milestone completion timescales				
					Mar 2024	June 2024	Sept 2024	Dec 2024	Year 2
1.3 SS1 IA	Improve the Autism & ADHD Assessment Waiting times for Children and Young People, and support when waiting.	Startwell Lead ICB Michele Gumarin	<ul style="list-style-type: none"> a. Update the Local Offer with ASC advice and information – Mar 24 b. Update the Local Offer with ADHD advice and information – Mar 24 c. Tavistock & Portman Trust to reduce autism assessment waiting times to WSOA target levels – Year 2 d. Whittington Health Trust to reduce autism assessment waiting times – Yr 2 e. BEH Trust to reduce ADHD assessment waiting times from 12 months to 9months – Year 2 f. Commission a pre and post ADHD support service to cyp and families.- Sept 24 g. Localise the NCL Neuro Diverse framework (ASC & ADHD) to Haringey's needs and vision.- Sept 24 h. Agree the next phase of improvement planning in Neuro Diverse pathways in Haringey – Sept 24 	<ul style="list-style-type: none"> • Waiting times (Data Dashboard: ASC1) • Communication (Data Dashboard: COM3) • Parents tell us that communication following referral to an autism or ADHD assessment is good and they feel informed • Parents tell us they feel that they have adequate support whilst they are in the process of waiting for/ having an autism or ADHD assessment 					
1.4 SS1	To continuously improve the co-ordination, and timeliness of education, health and care plans and annual reviews	Senior QA Practitioner, LBH Francesca Zucconi SAT Service Manager, LBH Alena Lerari Head of Virtual School, LBH Eghele	<ul style="list-style-type: none"> a. Monitor and complete SEND Audit Reports and Action plans (Quarterly) b. Virtual school to have processes to ensure EHCP annual review and PEP is combined in the PEP cycle. (Apr 2024) c. Virtual school to provide termly numbers for combination of EHCP annual review and PEP to SEND team. (Apr 2024) d. Series of workshops held across the directorate to increase service knowledge around completing social care advice – emphasis on quality and accuracy of detail included in the form. (June 2024) e. Repeat workshop on a quarterly circle to capture new starters and refresh knowledge. (dates in diary for academic year 24/25) f. Dip sampling of completed social care and health advice to measure timeliness and quality of information. Feedback findings to wider service to indicate progress and any areas of challenge. (June 2024) 	<ul style="list-style-type: none"> • Review completed (October 2023) • Number of Audits completed monthly/ Quarterly (Data Dashboard: AUD1) • Outcomes of Audits and Moderations (Data Dashboard: EHCP3, EHCP5) 					

SEND Strategy Priority 2: All young people in Haringey with SEND are able to have their education, health and care needs met within Haringey wherever this is possible.

Ref	Action	Lead	Milestone	Impact measures	Milestone completion timescales				
					Mar 2024	June 2024	Sept 2024	Dec 2024	Year 2
2.1 SS3	Expand our Alternative Provision offer	Assistant Director, Schools and Learning, LBH. Jane Edwards	<ul style="list-style-type: none"> a. Alternative Provision action plan will be developed which aligns with the Council’s SEND Strategy. b. An SEMH pathway is developed which aligns with the AP pathway – Dec 24 	Pupils have access at the right time to outreach or respite AP with successful reintegration into mainstream					
2.2 SS1	Refresh JSNA and implement associated actions	Senior Commissioner, Public Health, LBH Linda Edwards	<ul style="list-style-type: none"> a. JSNA underpins our SEND strategy, therefore this will be updated 3 yearly to ensure that we have the right information to enable measurement of progress, and to inform planning which accurately reflect needs. :Annual Review of JSNA b. Commissioned Public Health services will take an inclusive, targeted approach and this is reflected in service specifications for early recognition to enable the right level of intervention to achieve best possible health outcomes.: Annual Review of SNA c. Utilise PH intelligence data to inform CYP services of children with SEND that are most disadvantaged, to enable a whole systems approach for reducing health inequalities. Annual Review of JSNA 	<p>PH intelligence data to inform progress and future needs.</p> <p>Service specifications set out service delivery inline with and commissioning plan</p>					
2.3 SVP A.6	Implement new Early Years Bandings and Top-Ups	Early Years Improvement Lead/ SEND Inclusion Lead Nick Hewlett Ellika McAuley	<ul style="list-style-type: none"> a. Review use and distribution of early support places March 2024 b. Review and implement new early years Bandings September 2024 	GLD for children with SEND in early Years					

SEND Strategy Priority 2: All young people in Haringey with SEND are able to have their education, health and care needs met within Haringey wherever this is possible.

Ref	Action	Lead	Milestone	Impact measures	Milestone completion timescales					
					Mar 2024	June 2024	Sept 2024	Dec 2024	Year 2	
2.4 SS4 SVP B 1.1 B1.2 B7.1 B.7.2	Increase the sufficiency of Specialist Placements for autistic children and young people and those with social, emotional and mental health needs.	Head of Programmes (Commissioning and Projects, LBH) Stu Barratt (Interim)	a. Cabinet approval gained (Feb 2024) b. ASC and SEMH subgroups to be established to ensure the health and support interventions required in the increased capacity are planned and resourced. (April 24) c. Builds started (Summer term 2024) d. Builds completed (Sept 2025)	<ul style="list-style-type: none"> New places created Reduction in out borough placements (dashboard) 						
2.5 SPV B6	Ensure that Haringey has a needs led Banding and Top-Ups system which ensure children and young people receive early support, have their needs met in a timely fashion and that funding follows the child.	Head of SEND, LBH Mary Jarrett	a. New Bandings devised by March 2024 b. New Bandings consulted on November- December 2023 c. Governance arrangements created- January 2024 d. New financial settlement agreed- March 2024 e. System review September 2026.	<ul style="list-style-type: none"> Increase in take-up of Early Intervention Band C Improved academic outcomes for children and young people with SEND. 						
2.6 SS6 SVP B2 and B5	Create a Quality Assurance Framework to review Specialist Provision in and out of Borough	Head of Children’s Commissioning, LBH Ginny Thorne (Interim)	a. Review of current commissioning framework- end June 24 b. QA Framework agreed- agree sign off procedures- Sept 24 c. QA visits scheduled- identify providers and agree timetable - Sept 24	<ul style="list-style-type: none"> Improved outcomes for children and young people with SEND in Haringey. 						
2.7 SS4 SVP B 1.1 B1.2 B7.1 B.7.2	Increase provision for post 16 SEMH and post 19	Head of Programmes (Commissioning and Projects, LBH) Stu Barratt (Interim)	a. Commissioning framework for SEND to include: Dec 24 -Independent Special Schools -Pre and Post 16 Tuition Providers -Post 16 settings -Post 19 Settings b. In addition to framework identify opportunities for block purchase with high quality providers to negotiate volume discounts –aligned with procurement regulations – Sept 24 c. Resource provisions: pre and post 16 - Year 2 •School D 34 SEMH places	<ul style="list-style-type: none"> New provision commissioned Reduction in OOB placements (dashboard) 						

SEND Strategy Priority 3: We will deliver a Local Offer to children and families that allows them choice and access to services that meet their needs

Ref	Action	Lead	Milestone	Impact measures	Milestone completion timescales					
					Mar 2024	June 2024	Sept 2024	Dec 2024	Year 2	
3.1 SS8	Strengthen our Short Breaks Offer which will include the development of residential respite provision within the borough	Head of Service Disabled Childrens Service, LBH Emma Cummergen DCSO, LBH Dennis Scotland	<ul style="list-style-type: none"> •Disability Register established embedded within LL December 2024 •Consent form to be redrafted and circulated to parents. Then DR to be activated. December 24 •Discount card scheme to be launched early Feb 24 •Discussions underway with local provider to lease their provision on a short-term basis while the new build process is completed. Approach aimed at addressing the overnight and weekend respite provision. December 2024 •Long term build site identified, planning and architectural discussion are underway 2026. •Launch of revamped Short Breaks application form Jan 2024 •Short Breaks guidance to be updated and reissued Jan 2024 •Short Break offer to streamlined to further clarify pathways of support. Jan 2024 	<ul style="list-style-type: none"> • Number of CYP receiving a Short Break. • Families having access to overnight and weekend respite, and increased choices. • Reduction in the number of complaints around sufficiency. • Improved range of choices for parent/carer. 						
3.2 SS10 SVP A.1 A.2 A.3 IA	We will embed our transformation of SLCN pathways and refreshed SLT offer to ensure that needs are identified early and waiting times are reducing.	Head of SEND, LBH Mary Jarrett Startwell Lead ICB Michele Gumarin HOS Commissioning, LBH Ginny Thorne (Interim) Head of CYP, Whittington Jane Grant	<ol style="list-style-type: none"> SLT individual purchasing mapped and reviewed- Sept 24 SLCN pathways monitored and further developed – Sept 24 Agree KPIs and of new SLCN specification.- Mar 24 Present new SLCN pathway to GPs – Mar 24 	<ul style="list-style-type: none"> • SaLT waiting times (Data dashboard: P1K) • EHCPs with primary need of SLCN (Data dashboard: A11) 						

SEND Strategy Priority 3: We will deliver a Local Offer to children and families that allows them choice and access to services that meet their needs

Ref	Action	Lead	Milestone	Impact measures	Milestone completion timescales				
					Mar 2024	June 2024	Sept 2024	Dec 2024	Year 2
3.3 SS1	<p>Review OT Services and create a graduated response to needs.</p> <p>Ensure Haringey's Specialist Equipment policy is up to date and published on the Local Offer</p>	<p>HOS Childrens Commissioning. LBH Ginny Thorne (Interim)</p> <p>Startwell Lead ICB Michele Gumarin</p> <p>Head of CYP, Whittington Jane Grant</p> <p>SEND Transformation Manager, LBH Matthew Fisk</p>	<p>a. Review existing pathway – Sept 24</p> <p>b. Identify gaps – Dec 24</p> <p>c. Define transformation plan – Dec 24</p> <p>d. Implement a graduated OT model of delivery – Year 2</p> <p>e. Review policy and up-date Local Offer- September 2024.</p>	<ul style="list-style-type: none"> OT waiting times Service user evaluation. Waiting times for equipment. 					
3.4 SVP A3	<p>Develop graduated response for SEMH, linked to borough plan for improving child mental health</p>	<p>Head of SEND, LBH Mary Jarett</p> <p>Startwell Lead ICB and LBH Michele Gumarin</p> <p>Head of CAMHS, BEHMHT Clive Blackwood</p>	<p>a. Complete a deep dive of CYP SEMH services to identify best practice and areas for improvement – Sept 24</p> <p>b. Develop a graduated response for SEMH in Haringey – Sept 24</p> <p>c. Define pathways between SEMH offers in education settings and specialist services based on Thrive practice – Year 2</p>	<ul style="list-style-type: none"> CAMHS acceptance and referral rates. Referral of young people with SEMH needs for EHCNA (Data dashboard: A12) 					

SEND Strategy Priority 4: We will actively seek opportunities to work with our children, young people and families in a model of co-production

Ref	Action	Lead	Milestone	Impact measures	Milestone completion timescales				
					Mar 2024	June 2024	Sept 2024	Dec 2024	Year 2
4.1 SVP A.4 B.6	Ensure that Children, young people, parents and carers tell us that they were involved in co-producing their EHCP plans and the plans are producing the right help at the right time	Head of SEND, LBH Mary Jarret	<ol style="list-style-type: none"> All parents and young people are involved in writing their plan and reviewing it from September 2024 Parents receive a feedback email after statutory assessment or Annual review Process is complete. From September 2024 Needs/ Provision and outcomes are accurately described in plans from September 2024 Support to deliver the plan is available and understood. From September 2024 Update the EHCP to include GP details- September 2024 Ensure GPs are sent a copy of the final EHCP- September 2024 	<ul style="list-style-type: none"> Dashboard QA scores (Data Dashboard: EHCP3, EHCP5) Co-production measures (Data dashboard: COM6, COM7, EHCP2, EHCP 4, EHCP8) 					
4.2 SS4	Develop an Inclusive approach to young people’s participation and co-production.	HOS Early Help & Prevention Simone Common	<ol style="list-style-type: none"> Elevated Youth to develop an annual projects in relation to SEND improvement (June 2024) You Said/ We did accountability Framework developed (September 2024) NLMHP implement a youth panel in CAMHS services (September 2024) 	<ul style="list-style-type: none"> No of yp involved in formal SEND system delivery You Said/ We did. 					
4.3 SS4	Develop Co-production training and Charter and accompanying Core standard to develop outcomes from The Voices Day 2023	Head of SEND, LBH May Jarrett	<ol style="list-style-type: none"> Development of a SEND charter – January 2025 Development of Haringey Co-production training- January 2025 Development of final Core Standard for working with parents and carers- January 2025 	<ul style="list-style-type: none"> Attendance at training Training Feedback measures 					

SEND Strategy Priority 5: We will prepare our children for their adult lives and support their transition

Ref	Action	Lead	Milestone	Impact measures	Milestone completion timescales				
					Mar 2024	June 2024	Sept 2024	Dec 2024	Year 2
5.1 SS 11 SVP B.5	Review current education, employment and training offer for post-16s in Haringey	Head of SEND, LBH Mary Jarrett HOS Children's Commissioning, LBH Ginny Thorne (Interim)	a. Review existing offer and spend- April 2024 b. Identify gaps and develop improvement and delivery plan- June 2024	<ul style="list-style-type: none"> Number of SEND NEETS (Data Dashboard: P5B) Number of Support Internship places (Data Dashboard: P5C) 					
5.2 SVP B.5	Improve quality of PfA outcomes in EHCPs for young people from Year 9 and above	Service Manager Statutory Assessment Alena Lerari	a. Annual Review training- September 2024 b. Co-production training- September 2024 c. EPS training- September 2024 d. SENDco support partner development work- from September 2024 e. Ensure adults services are represented and contribute to PfA planning -Year 2	<ul style="list-style-type: none"> Year 9 Annual reviews(Data Dashboard: EHCP7, P5D, P5G) Quality Assurance Measures for EHCPs (Data Dashboard: EHCP3, EHCP5) 					
5.3 SS5 IA	To improve the timely support for Young People as they move into adulthood	HOS SEND, LBH Mary Jarrett HOS Learning Disability, LBH Andrea Kelly HOS, Transitions/DSCO Dennis Scotland	a. Increase no of SEND Supported Internships to 90 per year from Year 2 b. Develop SEND pre-supported Internships mode – September 2024 c. Develop a joint Transitions Team between Council Childrens and Adults services. d. Develop reporting Framework for Transitions service milestones	<ul style="list-style-type: none"> Number of SEND NEETS (Data Dashboard: P5B) Number of Support Internship places (Data Dashboard: P5C) 					