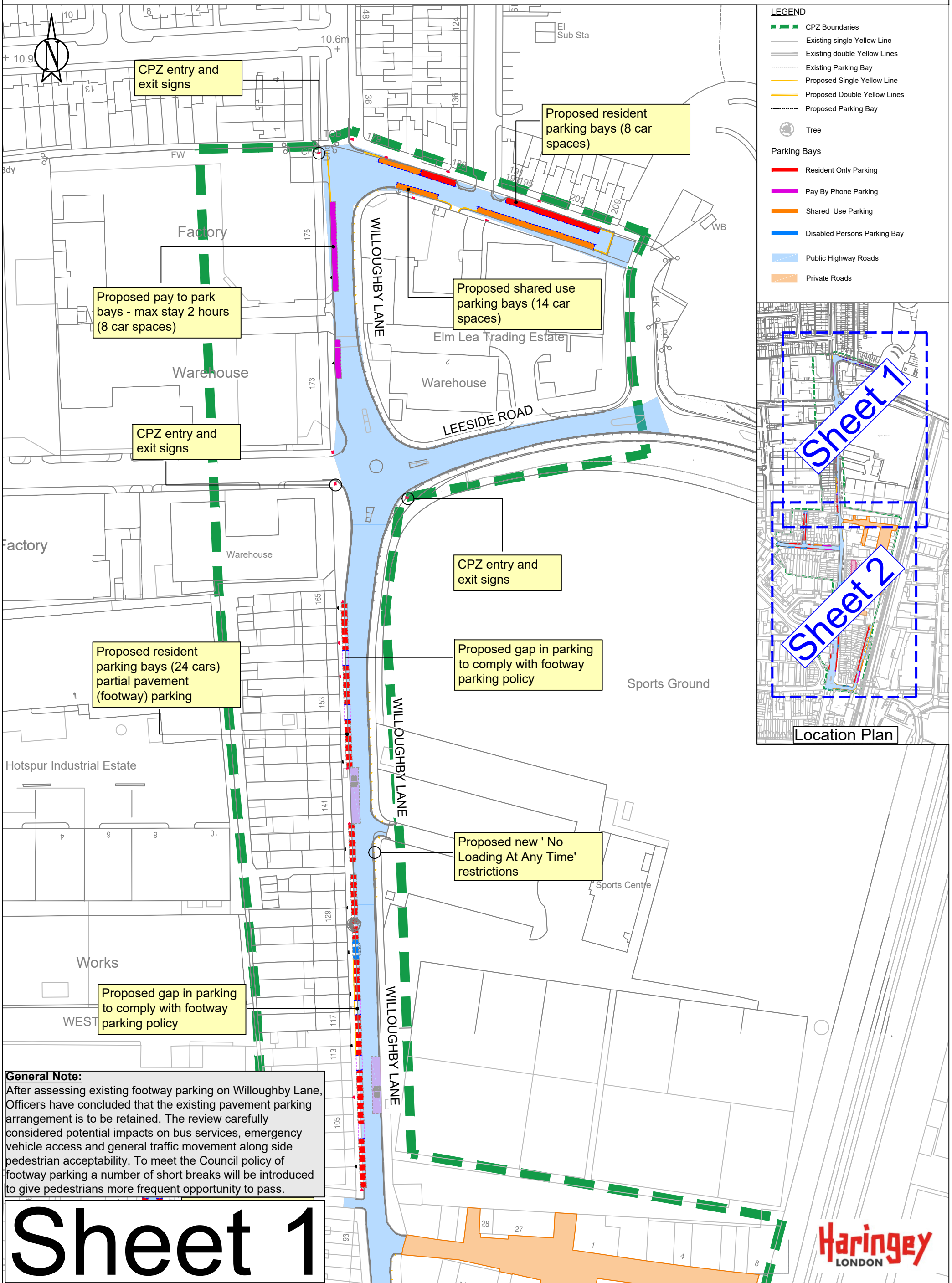
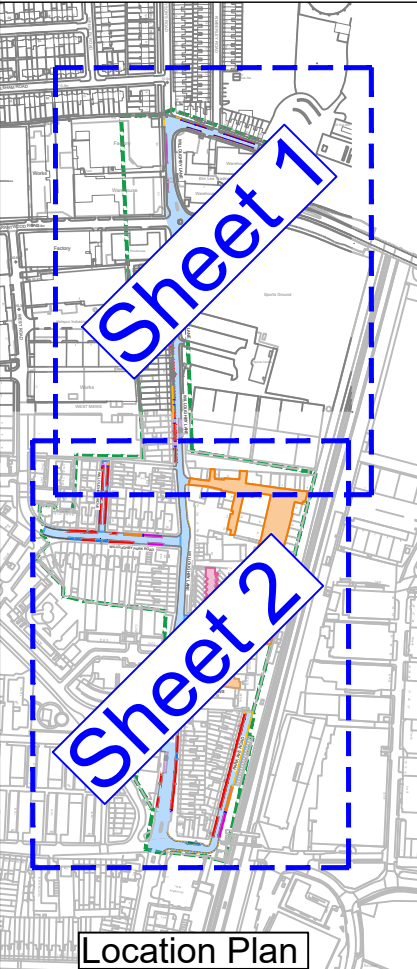


Proposed Willoughby Lane Controlled Parking Zone



- LEGEND**
- CPZ Boundaries
 - Existing single Yellow Line
 - Existing double Yellow Lines
 - Existing Parking Bay
 - Proposed Single Yellow Line
 - Proposed Double Yellow Lines
 - Proposed Parking Bay
 - Tree
- Parking Bays**
- Resident Only Parking
 - Pay By Phone Parking
 - Shared Use Parking
 - Disabled Persons Parking Bay
 - Public Highway Roads
 - Private Roads



CPZ entry and exit signs

Proposed resident parking bays (8 car spaces)

Proposed pay to park bays - max stay 2 hours (8 car spaces)

Proposed shared use parking bays (14 car spaces)

CPZ entry and exit signs

CPZ entry and exit signs

Proposed resident parking bays (24 cars) partial pavement (footway) parking

Proposed gap in parking to comply with footway parking policy

Proposed new 'No Loading At Any Time' restrictions

Proposed gap in parking to comply with footway parking policy

General Note:
 After assessing existing footway parking on Willoughby Lane, Officers have concluded that the existing pavement parking arrangement is to be retained. The review carefully considered potential impacts on bus services, emergency vehicle access and general traffic movement along side pedestrian acceptability. To meet the Council policy of footway parking a number of short breaks will be introduced to give pedestrians more frequent opportunity to pass.

Sheet 1