

STATIONERS PARK



Park Management Plan 2020
(minor amendments January 2021)

Section	Heading	Page
	Foreward from Cllr Hearn	4
	Open space vision in Haringey	5
	Purpose of the management plan	6
1.0	Setting the Scene	
1.1	Haringey in a nutshell	7
1.2	The demographics of Haringey	7
1.3	Deprivation	8
1.4	Open space provision in Haringey	8
2.0	About Stationers Park	
2.1	Site location	9
2.2	Facilities	9
2.3	Trees	15
3.0	A welcoming place	
3.1	Visiting Stationers Park	16
3.2	Entrances and paths	17
3.3	Access for all	18
3.4	Signage	18
3.5	Toilet facilities and refreshments	19
3.6	Events	19
4.0	A clean and well-maintained park	
4.1	Operational and management responsibility for parks	21
4.2	Current maintenance by Parks Operations	21
4.3	Asset management and management of projects	23
4.4	Scheduled maintenance	25
4.5	Setting and measuring service standards	27
4.6	Monitoring the condition of equipment and physical assets	29
4.7	Tree maintenance programme	29
4.8	Graffiti	29
4.9	Maintenance of buildings, equipment and landscape	29
4.10	Hygiene	30
5.0	Healthy, safe and secure place to visit	
5.1	Smoking	31
5.2	Alcohol	31
5.3	Walking	31
5.4	Health and safety	31
5.5	Reporting issues with the 'Our Haringey' app	32
5.6	Community safety and policing	33
5.7	Extending Neighbourhood Watch into parks	33
5.8	Designing out crime	33
5.9	Locking the park	34
5.10	Dogs and control of dogs	34
6.0	Sustainability	
6.1	Greenest borough strategy	36
6.2	Pesticide use	36
6.3	Sustainable use of materials	36
6.4	Recycling	37
6.5	Pollution reduction	37
6.6	Water efficiency	37

Section	Heading	Page
7.0	Community involvement	
7.1	Volunteering in parks	38
7.2	Friends of Stationers Park	38
7.3	Haringey Friends of Parks Forum	39
7.4	Hornsey Vale Community Association	40
7.5	Weston Park Primary School	40
8.0	Conservation and heritage	
8.1	Biodiversity and the Biodiversity Action Plan	41
8.2	Habitat representation and nature conservation interests	41
8.3	Designation status	42
8.4	Conservation Action Plan	42
8.5	Site history and heritage	42
9.0	Marketing and communications	
9.1	The marketing approach	44
9.2	Websites	44
9.3	Social media	44
9.4	Publications	45
9.5	Noticeboards	45
9.6	Campaigns	45
9.7	Awards	46
9.8	Tree and bench sponsorship	46
9.9	Consultation and market research	46
10	Management of the park	
10.1	Setting the financial scene	47
10.2	Management structure	48
10.3	Borough Plan 2019-2023	49
10.4	Parks and Open Spaces Strategy	50
10.5	The Greenest Borough Strategy	50
10.6	The Health & Wellbeing Strategy	50
10.7	Finance and funding	51
11	Improving Stationers Park	
11.1	Next steps	52
11.2	Summary	52
12	Action Plan	
12.1	Maintenance & scheduled work programme	53
12.2	Stationers Park action plan	53
	Appendices	
	1. Stationers Park Conservation Management Plan	59

Foreword

Dear residents and park users,

I am pleased to share with you the management plan for Stationers Park. This plan has been developed by Haringey Council, in partnership with the key stakeholders of Stationers Park.

Residents have told us that our parks and green spaces are one of the things they love the most about Haringey, and as a council, we agree. We are proud of our green spaces and are committed to doing all we can to make our parks the very best they can be.

Most of Haringey's district and local parks have been nationally recognised through the Green Flag Award scheme, and we continue to work with Friends groups to maintain and improve our parks for our community and visitors alike. In a recent resident survey 80% of people told us they were satisfied with parks and greenspaces in the borough.

It is no secret that Haringey – like all local authorities – has been affected by austerity, but we continue to work hard to fund and maintain our parks, as well as bringing in external investment to provide a much-needed boost.

Green spaces in Haringey play so many different roles - from a retreat from the busy city, or a place for sport and play, to sites for nature conservation and world-renowned events. Each management plan seeks to balance the many competing demands for each park to allow our community to enjoy the park their way.

This management plan looks to show how the council is meeting and addressing the criteria of the Green Flag Award scheme and sets out the priorities for action and improvement of the park over the coming years.

I hope you find this document useful and I would encourage you to make the most of your local park. If you want to get more involved in the future management of the park why not consider joining a Friends group, attending an event or simply just send us some of your thoughts?

Thank you,



Cllr Kirsten Hearn
Cabinet Member for Climate Change, Equalities & Leisure

Open space vision in Haringey

Our draft vision is that Haringey's parks and green spaces will be places where:

- Residents' lives are being improved by access to quality green space
- Communities take an active role in the decisions about the future of parks and green spaces
- Civic pride and community ownership of parks are encouraged, through a diverse range of volunteering opportunities
- A diverse range of events is offered, providing a backdrop for communities to celebrate together and enhance the borough's cultural offer
- Wildlife flourishes and habitats are maintained, expanded and connected.
- Spaces are protected and future proofed for the next generation
- Funding for parks is sustainable and sufficient to deliver the agreed service standards
- Full advantage is taken of the health and wellbeing benefits

The Parks and Green Spaces Strategy is in development and will be subject to consultation with a range of partners and stakeholders before the Council is asked to formally adopt it in 2021. More details are set out in sections 10.4 and 10.5.

Purpose of the Management Plan

This management plan details and guides the management, maintenance, development and improvement of Stationers Park now and over the next three years.

In developing this management plan, we particularly want to stress the importance we place on our commitment to involve the whole community in shaping the future of Stationers Park. This is because we recognise that open space affects the lives of almost everyone who lives and works near the park. We believe that the combination of effective management and community involvement of all our open spaces offers considerable potential for helping to make Haringey a thriving and more cohesive community.

This management plan should be treated as a living and evolving document. It is open to review and adaption in an ever-changing environment.

This document is the primary location where all those with a connection to Stationers Park - council staff and members, Friends and community groups, partners and residents - should be confident that everything about Stationers Park can be found and is set out here.

It also tells a little of the history of the park, how it is today and describes the plans and aspirations and how these are to be achieved.

1. Setting the scene

1.1 Haringey in a nutshell

Haringey is one of 33 London boroughs, and is located to the north of the capital covering 11 square miles in total.



Image 1: London Borough of Haringey shown in London

It is home to some famous landmarks including Alexandra Palace, birthplace of television, that can be seen from all over London perched high up on its hill. Bruce Castle Museum and Park, the ancestral home of Robert de Bruce, and the new Tottenham Hotspur football stadium are found in the east of the borough.

The borough has extreme contrast areas such as the high hilly communities of Highgate, Muswell Hill and Crouch End in the west being some of the most prosperous locations to live, while some wards in the east are classified as being amongst the 10% most deprived in the country.

Stationers Park is in Stroud Green ward in the south of the borough.

1.2 The demographics of Haringey

The Haringey website has detailed information about the population of the borough and individual wards within the borough. This can be found at <http://www.haringey.gov.uk/local-democracy/about-council/state-of-the-borough>. Some of the key demographics are set out below:

- Haringey has a total population of almost 283,000 people, an increase of 15% in the last 10 years
- Just over half (50.7%) are female and 49.3% are male
- There are 66,500 young people (aged 0-19) living in the borough. This is almost a quarter (24.5%) of the total population.
- Two thirds of the population – over 178,000 people - are aged 20-64
- A tenth of the population – 26,600 people are aged over 65
- Stationers Park is in Hornsey ward. The ward has a population of 12,669 people. The profile of the population is similar to the borough average with just over a fifth aged 0-19 and fewer a tenth aged over 65.

- Hornsey ward is one of the more densely populated in Haringey and London. The population density is over 12,800 residents per km² (compared to an average of 10,264 in Haringey and 8,697 in London). This highlights the importance of access to parks and open spaces in the neighbourhood.

Haringey is a highly diverse borough. Almost two fifths (38%) of residents are from (black, Asian or minority ethnic) BAME groups and 26% identify as “white other”. However, Hornsey ward (in which Stationers Park is located) has an above average white (British) population (49%) and is below the borough average for all other ethnic groups.

1.3 Deprivation

The Indices of Deprivation are widely used for identifying areas with high levels of deprivation. These figures are used to provide evidence for regeneration policy in England and to help target often limited resources more effectively.

Haringey is the 30th most deprived local authority area in England (out of 326 local authority areas) and is the 6th most deprived in London (out of 33 boroughs). These figures take into account a range of deprivation types, including income, employment, education, health, crime, barriers to housing and services and living environment.

1.4 Open space provision in Haringey

Haringey Council manages most of the public open space within the borough, except for Alexandra Park, Highgate Woods and Tottenham Marshes.

Although much greener than some other London boroughs, Haringey is deficient in all types of open space, including public parks. This fact underlines the importance of improving and maintaining sites like Stationers Park to enable more intense and diverse use.

In 2013 only 10% of Hornsey ward (in which Stationers Park is located) was open space. This is substantially below the average across Haringey (27.8%) and London (39.1%).

2. About Stationers Park

2.1 Site Location

The coordinates of Stationers Park are 530909 / 188437 and grid reference TQ309884.

Stationers Park covers an area of 15,964m². It is in the ward of Stroud Green, one of 19 wards within the London Borough of Haringey and is located within a densely populated area.

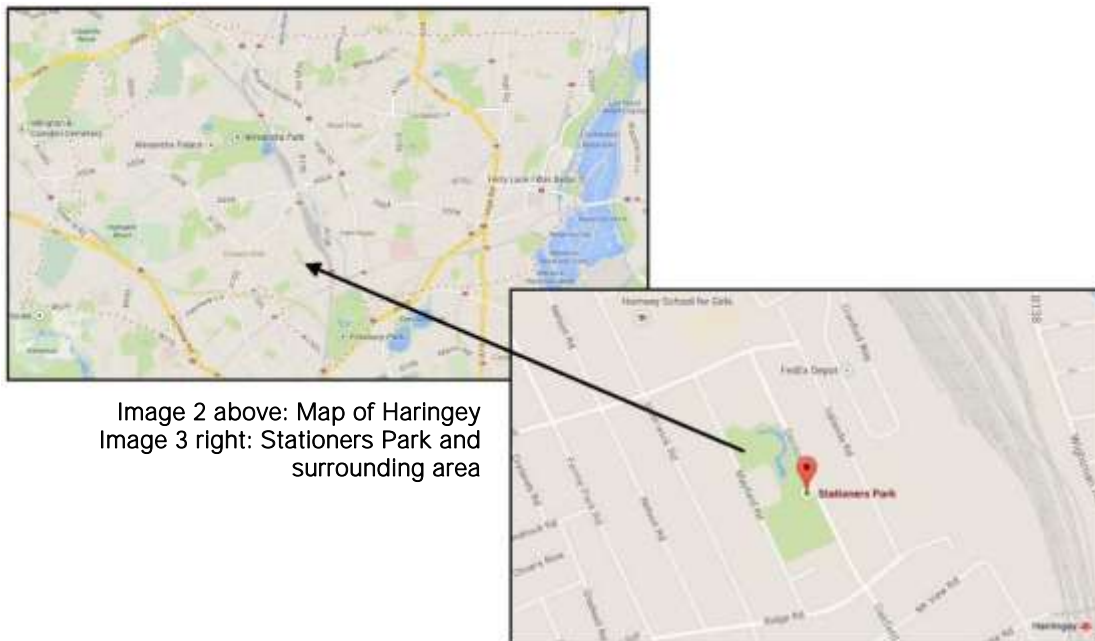


Image 2 above: Map of Haringey
Image 3 right: Stationers Park and surrounding area

Now sited on the land of where a school once stood, Stationers Park is a small local park situated between Mayfield Road and Denton Road in the eastern part of Crouch End. Victorian and early twentieth century housing in the area has largely changed from multiple occupancy to family ownership and flats for upwardly mobile single or professional couples.

The site is located between two large regional designated green spaces, both within the borough of Haringey. To the north is the popular Alexandra Palace and to the south is the equally popular Finsbury Park.

The perimeter fence of Weston Park Primary School forms the northern boundary of Stationers Park.

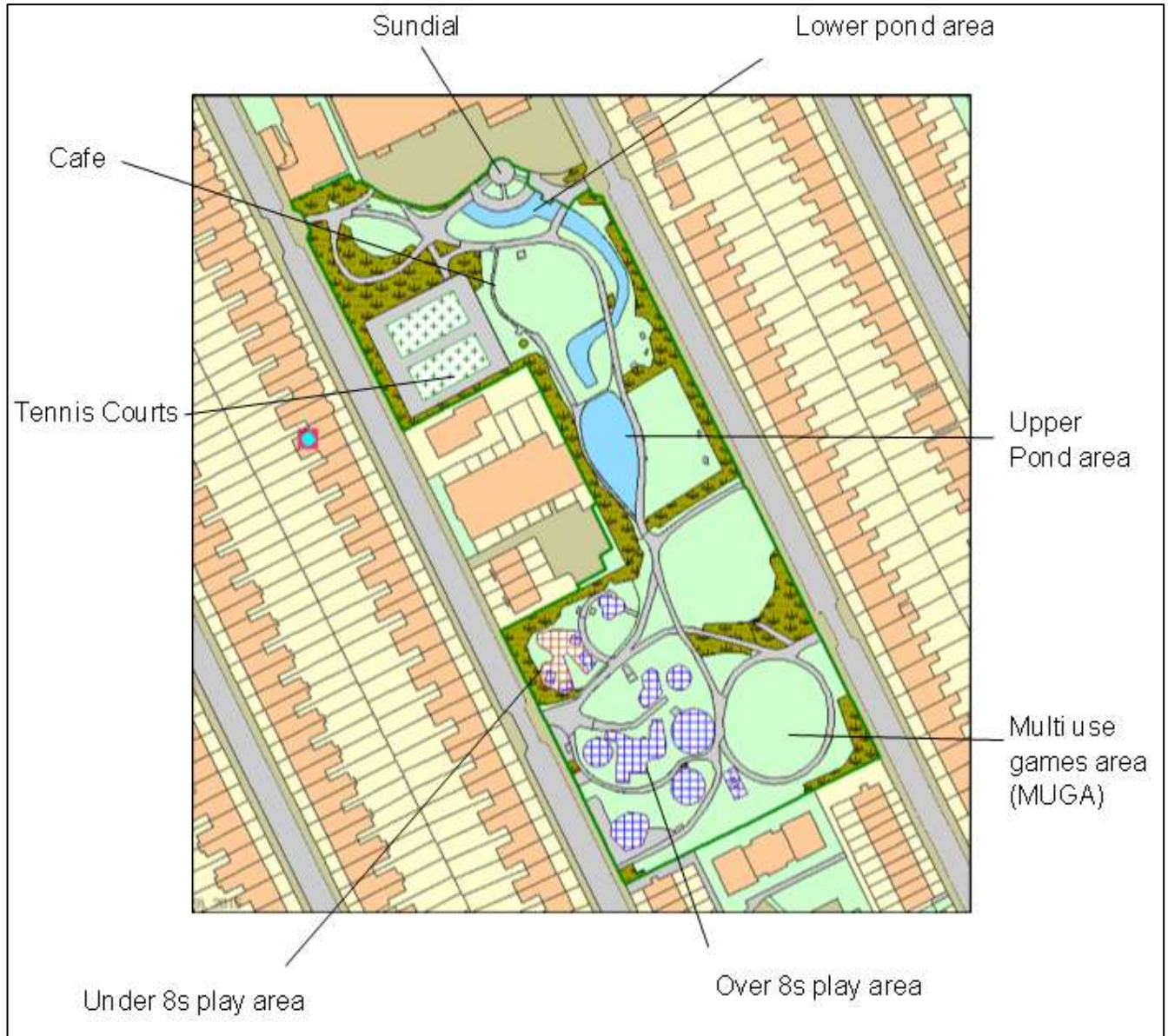
2.2 Facilities

For a relatively small site the facilities within are numerous and wide ranging, encouraging a wide and varied use of the park to all sectors of the community.

The park is naturally split into two distinct areas: the southern section of the park contains the play facilities. This includes two children's play areas, a multi-use games area and a table tennis table.

The northern section of the park is more varied. It includes two open grass areas, a café and the tennis courts, hidden away behind trees and shrubs. There is also a small pond at the south and further uphill there is a larger wildlife pond, with a rock cascade that acts as an overflow after heavy rain.

Map of Stationers Park showing its facilities



2.2.1 Southern section of Stationers Park

The southern section of the park which is at the top of the hill provides the perfect place for children's play.

The area is distinctively separated from the northern section of the park by a fence and shrubs, connected by a blue archway.

Due to this area containing all the children's play areas this complete area was designated a dog free area following the introduction of the dog control orders in 2012, which is shown on the entrance signs and floor stencils on the pathways into the area.



Image: Gateway into southern section of park

2.2.2 Older children's playground

The older children's playground is situated in the southern section of Stationers Park. This area takes up much of the southern section and is open and provides free flowing play, with no barriers or enclosed spaces.

Up until 2010 a large wooden fort structure had stood in the southern section of the park, offering children an innovative and imaginative play experience. For the last few years of its life the structure suffered decay and was deemed beyond economic repair. The Friends of Stationers Park, together with the local community campaigned for a similar structure to replace the fort and fundraised to make this a reality.

The re-built play area is a play experience which is loved by children of all ages, and that continues to provide innovative play opportunities.



Image: Stationers Park fort

Not only does the fort offer children to opportunity to climb, but it incorporates ropes, tubular poles and slides all adding to the play experience.

The main play area in the park is one of the best equipped play areas in the borough's parks. As well as the fort there is much to play on including a number of type swings and wooden structures to climb and swing on. There are also a number of boulders for children to clamber over and seats for people to sit and watch the activity

2.2.2.2 Younger children's (under 8s) playground

The younger children's play area is also situated in the southern section of the park. It was completely rebuilt in 2018 with funding from the council and fundraising by the Friends of Stationers Park.

The new playground comprises 10 varied items of play equipment, including swings (flat and cradle style, climbing and balance equipment, somersault bars and a small seesaw. It also offers benches and picnic tables for parents, carers and families to relax and supervise their children.

There is also a 'jungle trail' through the shrubbery at the rear of the playground.



Image: The under 8s play area (viewed from the over 8s play area)

The fence surrounding the playground offers greater protection for the younger children, not only from the more boisterous older children, but provides an enclosed area that parents can be confident to let the younger children run around without fear of them running off.

2.2.2.3 Multi use games area and grass area

The multi-use hard games area offers a place where informal ball games can take place. There are basketball hoops and five a side football goals offering structured play opportunities.

To the north of the multi-use games area is a swath of grass which is often used for informal kickabouts as well as picnics and other recreational activities. There are some benches. A tarmac path runs to a section of fencing that used to have a gate when the site was a school. Removal of this path is desirable but is a low priority.

2.2.2.4 Table tennis

A table tennis table was provided to the park by the English Table Tennis Association in 2010. The table was installed on concrete plinths with reinforced paving at each end to provide maximum protection against wear and tear. This has proved to have been a good decision as it still in good condition.

2.2.3 Northern section of the park

The ground slopes downhill from south to north with a drop of about 10m.

2.2.3.1 Upper pond

Stationers Park used to have a series of interconnected water bodies that follow the contour of the land. The water flowed from a pond at the top of the slope via a landscaped waterfall of imposing natural rocks to a narrower river like feature at the northern end. The circulation of the water was achieved by means of a 1980's built pumped water system. The pond had failed and become dry for several years and the circulating water system had fallen into disrepair. The costs of reinstating this system were prohibitive

However, in early 2020 the pond was re-dug and re-lined. The island was left in the new pond which is intended to be an attractive habitat for plants and animals. A wetland area has been created at the top, separated from the pond by a barrage.

The pond is less than a year old and is still becoming established both in terms of its ecology and how it is used by visitors to the park. Although intended as a wildlife habitat, during the hot spring and summer it was regularly used for paddling and play despite signage to the contrary. This is to be discouraged in 2021 and the role of the pond as a habitat and in supporting and attracting wildlife is to be developed.

The cascade and the dry channel below the pond remain in situ and are used by children for unstructured play. They also act as an informal overflow channel after sustained heavy rain.

2.2.3.2 Picnic areas

For more passive informal recreational purposes there are picnic tables and benches throughout the park. Two main grassy areas are used for relaxation, picnics and informal play. One is adjacent to the upper pond area and other is further down hill near the café.

2.2.3.3 Cafe

The former park keeper's hut was converted into a café which has been trading since 2018. There is more detail about the café in section 3.5.

2.2.3.4 Tennis courts

Two tennis courts are located to the north west of the park, hidden behind trees and shrubs. Despite their discreet location the courts are very well used for ad hoc games and coaching sessions. Nearby Weston Park primary school also makes use of them. The courts are free to use all year round.

It is hoped to refurbish these courts by 2022.

2.2.3.5 Lower pond and borders

A small, shallow pond area is found at the north of the park. Originally part of the circulating water system it is now self-contained with reed growth that provides a home to birds and insects. One side of the pond comprises brick walls and other side is banked. The friends of the park have planted up the banked area with a range of annuals and perennials.

2.3 Trees

The borough's parks and open spaces are of significant arboricultural importance as they contain some of the largest and oldest trees in the borough. Trees are an essential feature in parks providing shade and structure, making them a more attractive environment to visit.

The collection of trees that are found in Stationers Park have been planted over the years, with no real tree planting plan. A few of the trees predate the creation of the park, when it was the old school site.

There is a wide range of smaller trees around the perimeter. These include native species such as silver birch, hornbeam, field maple and the small leaved lime in addition to many ornamental introductions.

There is a planned tree inspection programme for which we aim to inspect each tree every four years. Trees in parks usually only require maintenance to mitigate risks to site users and adjacent properties.

A case of oak processionary moth was identified in Stationers Park in summer 2019. The tree which also overhangs the school playground was treated and has since been monitored.

3. A welcoming place

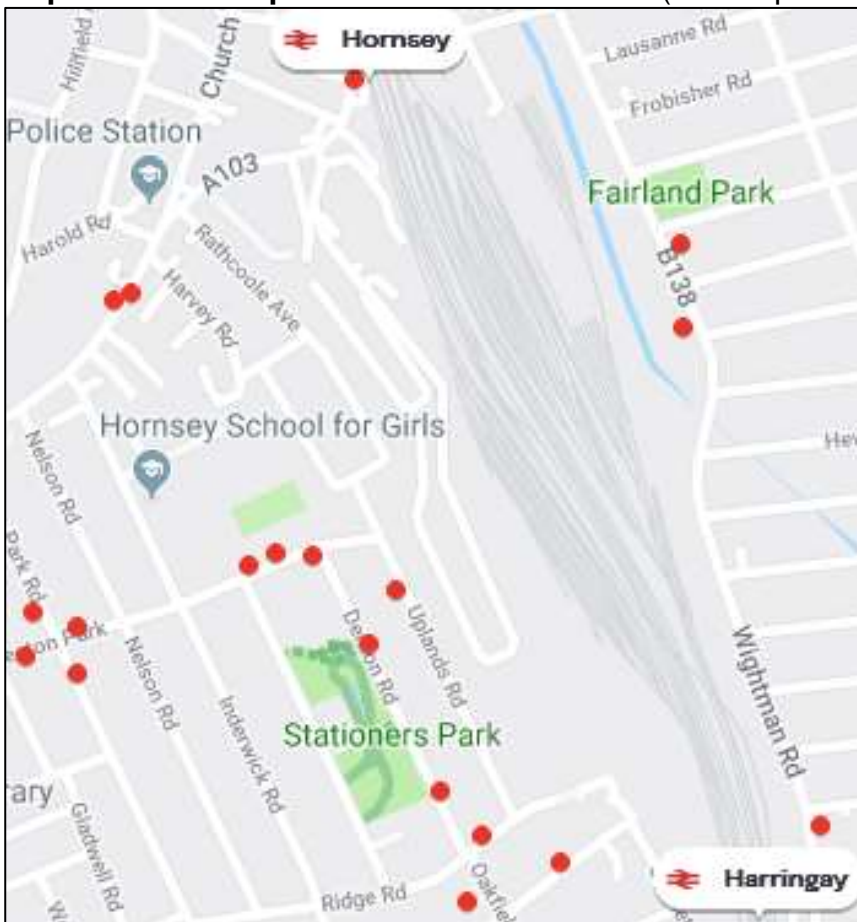
3.1 Visiting Stationers Park

Stationers Park is mostly used by people who live locally and who travel to the park by foot.

3.1.1 Public transport

For those coming from further afield the W5 pass along Denton Road and the W3 passes along nearby Ferme Park Road. The nearest station is Harringay (about 800m away) and Hornsey which is a little further by foot. The nearest tube stations are Turnpike Lane and Finsbury Park which are both about two kilometres away. The W3 bus links Finsbury Park Station to nearby Ferme Park Road. The 41 bus runs from Turnpike Lane along nearby Tottenham Lane.

Map: Public transport near Stationers Park (bus stop shown as red dots)



3.1.2 Vehicles

Motorised vehicles are not permitted in the park other than those required to carry out maintenance or cleaning of the park.

For those wishing to drive to Stationers Park – perhaps from further afield to meet friends who live more locally – visitors should be aware that there are parking restrictions in nearby streets. Street parking is restricted to permit holders from 12-2pm on Monday to

Friday. Information can be found on the [council's website](#). There are some short term pay-parking bays in Denton and Mayfield Roads.

3.1.3 Bicycles

Bicycles are not permitted to be cycled in Stationers Park. There are some bike stands by the lower pond and sundial for people who cycle to the park.

3.2 Entrances and paths

Stationers Park is surrounded by its distinctive blue mental railings which run the entire east and west perimeter. To the northern perimeter lies Weston Park Primary School and to the south lies housing.

There are four public entrances into Stationers Park, two from Denton Road and two from Mayfield Road. A fifth gate links the park directly to the school and is used by pupils and their parents and carers.

There is also a double vehicle access gate in the south western corner of the park. This is to permit access to contractors and maintenance operatives. These gates remain locked at all other times.

All four pedestrian entrances are identified by individual gate names, making meeting points and identification for maintenance easier for the user and operative staff. All entrances are step free.

Map: Entrances to Stationers Park



The two gates at the top of the hill from both Mayfield and Denton Roads going into the children's play area, lead you into the southern part of the park. This is a designated dog free area though dogs on leads are often seen entering the park from these gates. The action plan for the park includes a review of the dog-free policy in the southern section of the park (see section 5.10).

The two entrances at the bottom of the hill from both Denton and Mayfield Roads lead into the lower section of the park. Both entrances are marked by distinctive blue archways bearing the name of the park.

Just within the park at the Mayfield Road gate there is a gateway from the park leading into Weston Park Primary School. This is used daily by parents dropping off and collecting their children. The school also use this gate to get access to the park be it for games or educational activities.

3.3 Access for all

The 2010 Equalities Act defines a disabled person as someone with 'a physical or mental impairment, which has a substantial and long-term adverse effect on their ability to carry out normal, day-to-day activities'.

Haringey Council and its partners are required by law to ensure that disabled people are not discriminated against with regard to access to public places, such as Stationers Park.

This is considered whenever changes or improvements are made to the park. This not only benefits disabled users of the parks and their carers/companions, but also benefits those with small children and older people.

3.4 Signage

The welcome signs at each entrance to the park show an individual 'gate' name for ease of identification. These all relate to the road from which access to the park is gained. The entrance signs also show contact numbers for the council, police emergency and non-emergency numbers.

Symbols on the newer signage also highlight initiatives and make users aware of restrictions in place. These include:

- shared use walking / cycling symbols (with pedestrian priority)
- no unauthorised vehicles
- keep your park tidy
- three dog control orders with potential penalty for failing to adhere.

The entrance signs also include the Neighbourhood Watch logo to show the partnership the Council has with the Haringey Neighbourhood Watch Association (see section 5.7).

As well as the entrance gate signs, the play areas have signs which include:

- contact details for the Council
- any relevant age restrictions
- no alcohol symbol

- no smoking symbol
- no dogs allowed
- no glass bottles
- a message that children must be accompanied at all times.

Some signage has the 'old' Haringey Council logo and branding. As signs need to be replaced or renewed the new branding will be incorporated into the signage. Signage for new facilities will carry the new branding.

3.5 Toilet facilities and refreshments

Stationers Park has a small café since 2018 serving drinks, light snacks and home-made cakes. It is open most days, but is sometimes closed if the weather is poor. The café has its own Facebook page (search for Stationers Park Café) or can be emailed at stationersparkcafe@gmail.com.

Stationers Park does not have a public toilet. Hornsey Vale Community Centre next door to the park on Mayfield Road has toilets which are usually available during opening hours, usually 9am - 9pm. There are two disabled toilets and baby changing facilities.

There are also several cafes and restaurants in the locality, especially on Tottenham Lane and further afield around Crouch End Broadway. Most of these have toilet facilities for customers' use.

3.6 Events

The council welcomes and encourages events put on for the community in all its parks including Stationers Park. The [outdoor events policy](#) sets out the types of events that are encouraged and those we do not allow. Small community events and activities are particularly encouraged so we have made the application process easier and events for under 100 people are free of any charge.

The Friends of Stationers Park (in partnership with Hornsey Vale Community Centre) host an annual summer festival (see poster overleaf), but this was not possible in 2020. However, in 2019 this took place over two days and featured a range of entertainments and activities including musical performances ranging from local choirs and school bands to professional local talent who volunteered their time. The event also included an open-air cinema screening as well as an artisan food and craft market stalls.

Other regular events that are normally held annually include a Christmas carol event and Christmas craft market.

Money generated from major events in any of Haringey's parks contributes to providing support for community events to take place in parks. This includes more than £20,000 from the [Parks and Open Spaces Small Grants](#) 'community events' theme which is available for anyone to apply for.



An environmental impact fee is set out within the events fees and charges. This is charged to hirers on a sliding scale with the price dependent on the size and scale of the event. This is specifically set aside for the Friends and recognised stakeholders of the park the event took place in, to bid for. Event management training is also held each year for groups who want to learn how to put on a safe and exciting event in a park.

4. A Clean and Well-Maintained Park

4.1 Operational and management responsibility for parks

Responsibility for the management of maintenance of all the borough’s parks is split between two council teams.

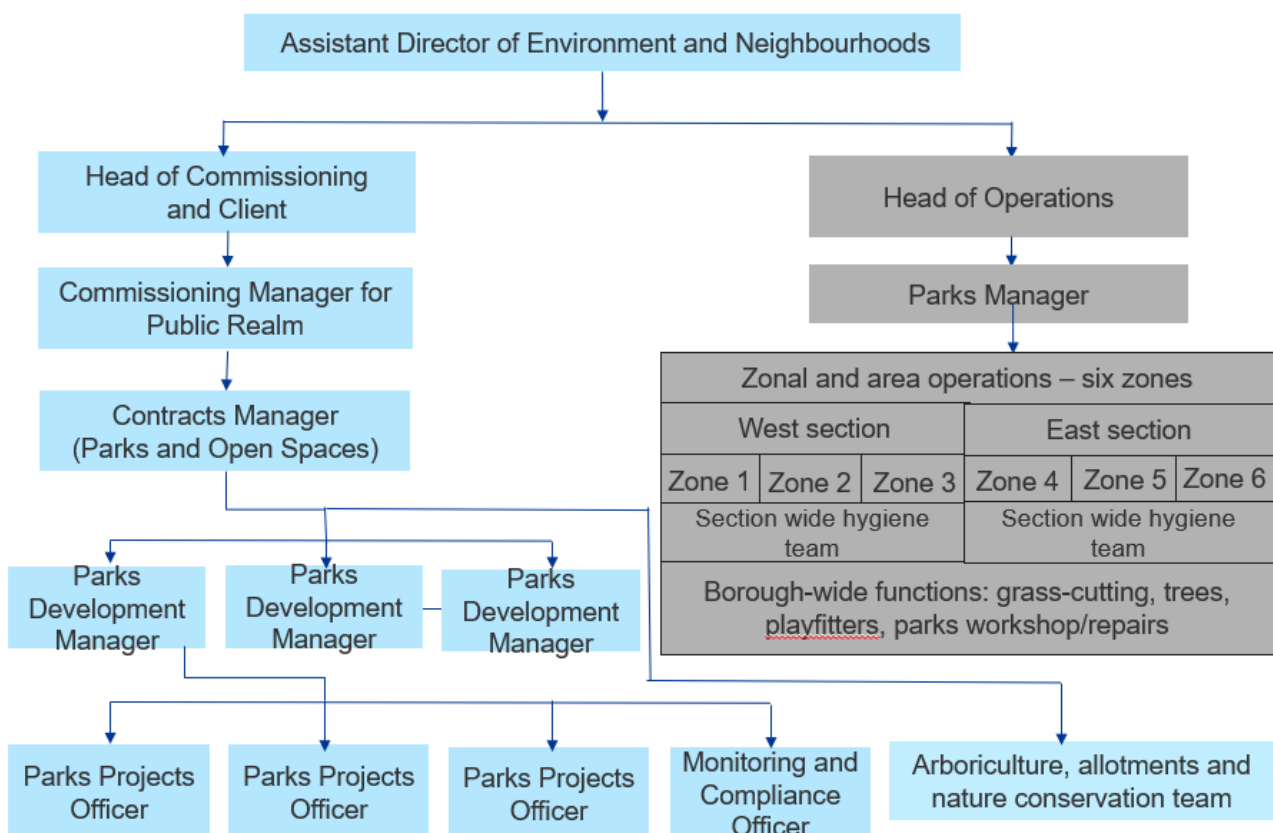
The Parks Operations team is responsible for the grounds maintenance and management of litter and hygiene within the park, while the Commissioning and Client Team is responsible for the physical assets within parks and the management of projects within parks, and for arboriculture, allotments and nature conservation.

4.2 Current maintenance by Park Operations

The structure chart overleaf shows a simplified overview of the work of the Park Operations team and how it links with the Commissioning and Client Team.

As shown, the borough is divided into two geographic sections (east and west), each of which is divided into three zones, giving a total of six zones across the borough. The zones are shown in the map overleaf.

Chart 1: Simplified parks structure



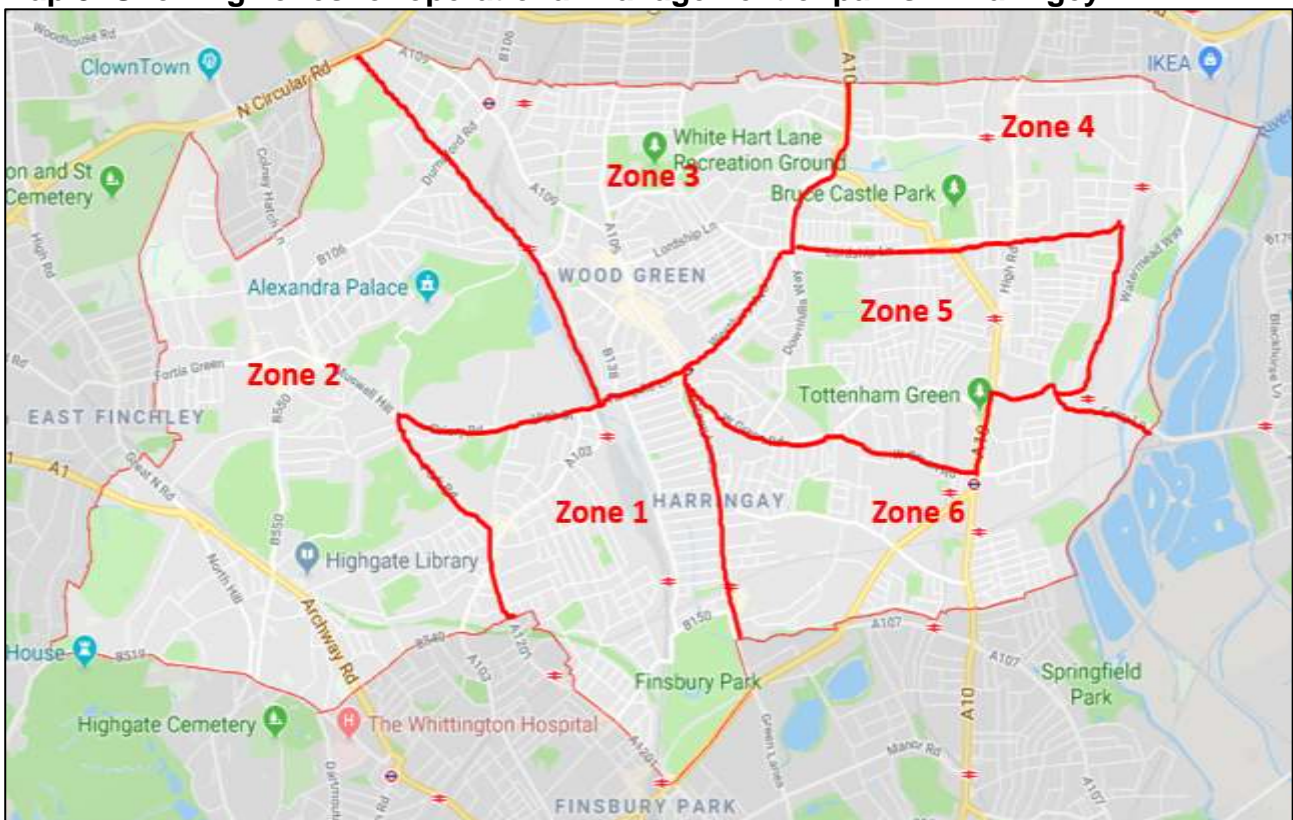
A more detailed structure is shown in section 10.2.

Each zone has a six grounds maintenance staff: a team leader, a senior operative and four gardeners, but team sizes are altered to meet operational demands by transferring staff between zones and by bringing in seasonal agency resource as necessary. Stationers Park is in operational zone 1.

The Parks Operations structure is the total resource available for all parks and open spaces. This not only includes council parks and open spaces, but also all the Homes for Haringey sites across the borough.

In addition to the zonal operations, the hygiene function is organised at a section-wide basis, one team operating in the east section of the borough and the other in the west. The hygiene teams empty litter bins across all parks and open spaces to an agreed schedule. They also respond to emergency cleansing and hygiene requests.

Map 3: Showing zones for operational management of parks in Haringey



At a borough-wide level there are also two play fitters who undertake maintenance and repair of playground equipment and outdoor gyms, and a team of two in-house arboricultural staff who carry out tree planting and supplement the use of external contractors for tree maintenance and responsive arboricultural work. Tractor-based mowing of larger areas of grass is also carried out as a borough-wide activity.

There are also two parks workshop fitters who carry out regular servicing of equipment and reactive repairs to parks machinery. They are based in dedicated parks workshop at Ashley Road depot.

Most park operatives work Monday – Thursday 7.30am – 3.30pm and Friday 7.30 to 1.30pm. However, limited weekend work also takes place with pitch marking and hygiene activities for example.

4.3 Asset management and management of projects in parks

The Client and Commission team work to the same six zones as the Park Operations team. One officer has been allocated to lead on projects, asset management and community liaison in each zone. Each zonal officer has responsibility for:

- Regular asset inspections
- Asset related enquiries
- Non-emergency asset repairs
- Management Plan input
- Project identification
- Friends Groups liaison
- Support for Friends-led development work
- Councillor liaison
- Identification of volunteering opportunities

The allocated officer for Stationers Park is currently Lily Labonte. She is acting in this role during the recruitment to the vacant Park Projects Officer for this zone.

A Nature Conservation Officer and a Monitoring and Compliance Officer have responsibility for parks and open spaces across the whole borough, including Stationers Park.

4.3.1 Contact details

The key staff and people involved in the management of Stationers Park are:

Name	Responsibility	Email
Lily Labonte	Physical assets; community liaison; capital projects	lily.labonte@haringey.gov.uk
Stuart Hopking	Grounds maintenance	tim.pyall@haringey.gov.uk
Sahina Choudhury	Litter and hygiene	sahina.choudhury@haringey.gov.uk

4.3.2 Park asset inspections and Spotlight visits

In 2018 the council adopted the Mayor of London’s typology for parks. Under this typology Stationers Park is described as a small site (A4) as it is under 2 hectares in area.

Since January 2019 the council has also instigated a programme of park asset inspections with the frequency dependent on the type of park. As a ‘small site’ park Stationers Park is inspected every three months.

The inspections cover hard assets, including:

- Bins, benches, bollards, lighting columns
- Signage, noticeboards, interpretation
- Paths, steps, handrails, areas of hardstanding, car parking and roadways
- Railings, fencing, gates, walls
- Play area safety surfacing and minor repairs
- Outdoor gyms

- MUGAs, tennis courts, hard sports courts
- Football goalposts
- Paddling pools
- Historic/heritage features/War memorials
- Fountains, artworks, structures, pergolas
- Waterbodies, SUDs, water leaks, drain covers
- Cycle stands, raised beds
- Bird & bat boxes

Parks assets are inspected and rated according to their condition, as follows:

A: Excellent: No action required

B: Good: No action required

C: Acceptable: No action required

D: Improvement required: Defects will be addressed as budgets allow

E: Emergency repair required: Make-safe within 24 hours. Full repair within 28 days.

During 2019 we started to use the Confirm database system to record the outcomes of all inspections, defects and customer enquiries. Confirm Connect handheld devices will be the main tool for recording site inspections.

Defects can also be reported by the public, Friends, councillors and stakeholders online via the Council's website at www.haringey.gov.uk/park-problem or by using the Our Haringey smart phone app or by calling the council.

As part of our zonal approach we are introducing 'Spotlight meetings' with councillors, Friends and key stakeholders of Stationers Park every few months. This is an opportunity to look at the park together to identify issues and opportunities within the park and by the stakeholders. The first of these was held in August 2019.

4.3.2 Capital projects

A parks capital project commences once a project brief has been approved by the council's Commissioning and Client Board and a capital budget and project manager has been allocated. The project manager is usually but not always the zonal lead.

Stationers Park recently benefitted from the installation of an under 8s playground in the southern part of the park. It comprises 10 pieces of equipment and two picnic tables. This was completed in 2018.

A project to reinstate the dry upper pond in the middle section of the park was completed in early 2020. Consultation with residents took the previous summer with near unanimous support for the reinstatement of the pond. Some residents were keen to reinstate the circulating water system but the cost of such a project and the maintenance costs of sustaining the system made it untenable.

A sustainable maintenance programme for the pond is required which involves the Friends and park users assisting with keeping the pond clean and sustainable.

4.4 Scheduled Maintenance

The table overleaf provides a summary of the maintenance regime within Stationers Park.

Table 1: Scheduled maintenance in Stationers Park

Activity	Frequency	Notes/comments
<p>Grass cutting:</p> <p>To achieve grade A at each maintenance visit:</p> <ul style="list-style-type: none"> Grass has been uniformly cut and is 35mm or less. Edges are trimmed and not growing onto hard surface or bedding. Litter picking prior to mowing. <p>Grass remains at grade B or above prior to maintenance visit:</p> <ul style="list-style-type: none"> Grass is 35-60mm long but looks tidy. Edges are slightly untidy Litter picking as per hygiene schedule. 	Approximately fortnightly	During the growing season (Mar-Oct approx.). May extend into November subject to prevailing climatic conditions.
<p>Bulb areas in Grass</p> <p>To achieve grade A:</p> <ul style="list-style-type: none"> Areas where bulbs are present should remain uncut from time of bulb emergence, until 6 weeks after flowerings ceases, or when foliage dies back or turns brown. Litter picking as per hygiene schedule. 	One occasion plus regular litter picking	Works required where bulbs are present in grass on site.
<p>Meadows</p> <p>To achieve grade A:</p> <ul style="list-style-type: none"> Meadow grass is cut at correct times of year for species type. Area surrounding the meadow is well maintained. Litter picking as per hygiene schedule. 	One or more occasions subject to type. Plus regular litter picking.	Guidance on maintenance schedule to be drawn from the conservation management plan for each park.
<p>Shrub bed maintenance</p> <p>To achieve grade A at each maintenance visit:</p> <ul style="list-style-type: none"> Bed free of weeds. No litter. Mulched where appropriate. Wide variety of plants. 	Two to four occasions as required per location.	Herbicide application will take place on two occasions a year

Activity	Frequency	Notes/comments
<ul style="list-style-type: none"> • Roses deadhead as required. • Shrubs pruned as required. • Edging well maintained. 		via controlled droplet application.
<p>Summer Seasonal Flower Beds</p> <p>To achieve grade B at each maintenance visit:</p> <ul style="list-style-type: none"> • Bed free of weeds. • No litter. • Adequate variety of plants (more could be added). • Edging maintained. • No deadheads. 	Up to ten occasions	<p>Gapping up of bedding to take place in response to vandalism.</p> <p>Drought tolerant planting to reduce need to water.</p>
<p>Hedge Maintenance</p> <p>To achieve grade A at each maintenance visit:</p> <ul style="list-style-type: none"> • Well-shaped and trimmed hedge. • Level sides and top. • No missed areas. • Base weed free. • No arisings present 	Two occasions per year except Privet hedges requiring three occasions.	Account of bird nesting to be taken each year and site specifics.
<p>Staked Tree Maintenance</p> <p>To achieve grade B at each maintenance visit:</p> <ul style="list-style-type: none"> • Growth is healthy and vigorous with little sign of disease. • Branches have been correctly pruned for species, purpose and location. • No dead or hanging branches. • Small amount of basal or sucker growth. • Base has been mulched where applicable. • Tree stake in good condition, firm in ground and • not rubbing tree where applicable. • Tree tie holding tree firmly but not tightly to stake where applicable. • No damage to base of tree during maintenance. • No dead material or cuttings left in area. 	One occasion per year plus watering for new trees during first two seasons	
<p>Bins, Litter and Dog Fouling</p> <p>To achieve grade B at each maintenance visit:</p> <ul style="list-style-type: none"> • All bins are emptied 	Daily	

Activity	Frequency	Notes/comments
<ul style="list-style-type: none"> The site is litter picked but may have a small amount of scattered litter in low traffic areas. Predominately free of detritus except for some light scattering. 		Dog fouling dealt with when reported.
Other		
Fly tips and other hygiene issues	Reactive	In response to emergency call-outs.
Sweeping of hard surfaces	Reactive	

4.5 Setting and measuring service standards

The quality of grounds maintenance and cleanliness of parks and open spaces is assessed via a simple four-point assessment system, called the Parks Quality Scoring system. The scoring categories are:

- A – Excellent
- B – Good
- C – Acceptable
- D - Unacceptable

These service standards are set out in a booklet that is made available to all grounds. The quality of grounds maintenance and cleanliness of parks and open spaces is assessed via a simple four-point assessment system, called the Parks Quality Scoring system. The scoring categories are:

- A – Excellent
- B – Good
- C – Acceptable
- D - Unacceptable

These service standards are set out in a booklet that is made available to all grounds maintenance and hygiene operatives. The aim of the booklet is to clearly and visually illustrate the different standards. Photographs, alongside brief and simple text, provide staff with a clear means of assessing the standards they are expected to achieve.

This system has since been adopted by the London Parks Benchmarking Group who have updated the manual and are working hard to get this recognised as an industry standard within the grounds maintenance trade both on a London-wide and on a national level.

The key performance indicators (KPIs) within this scoring system are for three main areas of activity and a fourth more seasonal category:

- Grass (which includes the grass cut height, follow up and final finish)
- Shrubs (which includes pruning, weeding of beds and general appearance)
- Hygiene (which is made up of 3 separate scores of litter and bins, detritus and graffiti)

- Seasonal and other categories (horticultural seasonal work such as hedges, leaf clearance, rose bed maintenance and seasonal bedding as well as nature conservation and some infrastructure points such as pathways).

The Monitoring and Compliance Officer visits each park and open space on a regular basis to assess these aspects of the park against the service standards.

An overall score is calculated based on the percentage of A (Excellent) and B (Good) scores achieved across all categories.

The boroughwide targets and performance for these KPIs are as follows (overleaf).

Table 2: Borough-wide performance targets

Category	Target A/B	Achieved 2018-19
Grass	90%	83%
Shrubs	60%	71%
Hygiene	55%	65%
Seasonal and other	90%	n/a

Illustrative service standards for grass cutting

<p>EXCELLENT</p> <ul style="list-style-type: none"> ✓ Grass has been uniformly and evenly cut including perimeter edges and obstacles. ✓ Length is longer than 25mm and shorter than 60mm. ✓ Edges are trimmed and not encroaching hard surfaces, hedge lines or bedding areas. ✓ Adjacent paths and bedding areas are kept clear of clippings. ✓ There are no bare patches. ✓ There is no weed infestation. ✓ All litter was removed prior to mowing. ✓ No leaf fall, litter, debris or dog fouling. 	 <p>EXCELLENT</p>	<p>ACCEPTABLE</p> <ul style="list-style-type: none"> ✓ Grass is longer than 60mm and not scheduled to be cut in the next week, or has been unevenly cut. ✓ Edges are untidy and encroaching hard surface or bedding. ✓ Adjacent paths and bedding areas are mostly kept clear of clippings. ✓ There are some areas of bare soil. ✓ There are some areas of unsightly weed infestation. ✓ All litter was removed prior to mowing. ✓ Small amount of leaf fall, litter, debris or dog fouling. 	 <p>ACCEPTABLE</p>
<p>GOOD</p> <ul style="list-style-type: none"> ✓ Grass has been uniformly and evenly cut including perimeter edges and obstacles. ✓ Length is longer than 25mm and shorter than 60mm. ✓ Edges are slightly untidy or encroaching hard surfaces, hedge lines or bedding areas. <p>or</p> <ul style="list-style-type: none"> ✓ Grass is longer than 60mm but due to be cut or has been unevenly cut across area. ✓ Edges are uniformly cut. <p>and</p> <ul style="list-style-type: none"> ✓ Adjacent paths and bedding areas are mostly kept clear of clippings. ✓ There are no bare patches. ✓ There is no unsightly weed infestation. ✓ All litter was removed prior to mowing. ✓ No leaf fall, litter, debris or dog fouling. 	 <p>GOOD</p>	<p>UNACCEPTABLE</p> <ul style="list-style-type: none"> ✓ Grass is not uniformly cut, or very long. ✓ Edges very untidy and grass is growing onto hard surfaces, hedge lines or bedding areas. ✓ Significant amounts of clippings present on adjacent paths and bedding areas. ✓ Significant areas of bare soil. ✓ Significant weed infestation. ✓ Litter not removed prior to mowing. ✓ Leaf fall, litter, debris or dog fouling present. 	 <p>UNACCEPTABLE</p>

With effect from December 2019 performance data relating to litter, hygiene and grounds maintenance will be collected and published on a quarterly basis. This is reflected in the action plan for Stationers Park at the end of this document.

It is also intended that other measures that are meaningful to park users and the local community will be developed.

4.6 Monitoring the condition of equipment and physical assets

Since early 2019 a Parks Project Officer also carries out a quarterly site inspection of the physical assets in Stationers Park. The condition of each item is noted and where applicable repairs (or replacements) are requested. Any grounds maintenance or hygiene issues that are observed, such as overflowing bins or dumped rubbish are raised with the appropriate officer within Parks Operations (or other council service).

The asset inspections do not include play and outdoor gym equipment which are inspected by the RPII registered Play Inspection Company. They conduct detailed quarterly inspections on all play equipment and outside gym equipment to RoSPA standards. Each item of equipment is risk assessed and a written report is provided to the council. Playground equipment is also visually checked by parks operatives.

Where equipment is deemed to represent a medium or high risk it will be repaired and, if necessary, taken out of use until the repairs are completed.

Two council officers within Parks Operations are also trained and qualified RoSPA inspectors and can sign off any repair to play and gym equipment.

4.7 Tree maintenance programme

Since 2016 a four-year planned inspection programme was introduced to identify any necessary works. Such works are prioritised and carried out within available resources.

Tree works in parks, open spaces and woodlands are usually undertaken to mitigate risks to site users and adjacent properties. For example works to trees in Stationers Park have in the past been carried out to remove diseased or dead trees and to reduce overhanging branches into adjacent properties.

4.8 Graffiti

As with most parks in the borough Stationers Park does suffer from occasional graffiti. Benches, bins and signs are most commonly targeted.

All graffiti of an obscene or offensive nature is removed within 24 hours of being reported. We aim to remove all other graffiti within three working days. Small bits of graffiti can be removed by parks operatives who have access to specialised graffiti removal kits.

Park users can report graffiti using the Our Haringey smart phone app, and the council website. The Council also has a 'hotline' number (020 8885 7700) direct to Veolia (the council's waste management contractor) to report obscene or offensive graffiti in parks and other public places.

4.9 Maintenance of buildings, equipment and landscape

Parks buildings are split into two categories.

- Properties that are leased or otherwise let to third parties. These fall under the responsibility of the council's strategic property team

- Properties that are used by the Council's Parks Operations team as offices or for storage, such as the parks depots. These fall under the responsibility of the council's corporate landlord team.

The former parkkeeper's hut in Stationers Park is leased out as a café (see section 3.5).

Equipment maintenance is carried out internally by the parks service for all types of equipment. Play inspections, as previously mentioned, are undertaken internally and through a specialist external contractor on a quarterly basis.

Landscape maintenance is carried out by the Parks Operations team.

4.10 Hygiene

The Hygiene Team is managed by Parks Operations, covering borough wide hygiene responsibilities. This includes all aspects of cleansing of any waste or spillages, spilled or dumped rubbish, dog waste etc.

Within Stationers Park waste bins are emptied daily, and any dumped rubbish that is reported to the service will be removed. There will be a phased removal of dog waste bins. In future dog walkers will be required to pick up their dog's poo and deposit it in general waste bins in the park.

5. Healthy, Safe and Secure

5.1 Smoking

Smoking is permitted (though discouraged) in Stationers Park although priority 2 of the council's Health and Wellbeing Strategy identifies smoking as a key factor in reducing life expectancy.

However there is a borough-wide smoking ban in place in all children's playgrounds including in Stationers Park. Signage at playground entrances highlights this.

5.2 Alcohol

Alcohol is permitted in Stationers Park but anti-social behaviour– including that associated with alcohol – will not be tolerated. Park users can call 101 to report unacceptable behaviour.

5.3 Walking

Walking is an excellent way to adopt a more active lifestyle and the health benefits can really make a difference. It's also a great way to get out and meet people.

The parks service in partnership with other agencies such as NHS Haringey offer regular organised walks in many of the borough's parks. However, because it is relatively small Stationers Park is not one of these. Nevertheless it provides an opportunity for people to walk. A circular walk on the paths around the grassy area in the park is just over 300m in length and five circuits is close to a mile's walk.

Further details on walks and walking groups in Haringey can be found at <https://www.haringey.gov.uk/parking-roads-and-travel/travel/walking>.

5.4 Health and safety

The health and safety of visitors to, and staff and contractors working in Stationers Park is given the highest priority. Health and safety within the park is managed by ensuring that:

- play and outdoor gym equipment is installed safely and inspected regularly, with any repairs identified and prioritised through the inspection process.
- infrastructure items (including games areas, water features and so on) are inspected regularly as detailed elsewhere in this document.
- planting and landscaping is designed to minimise the risk to park users, and the operational maintenance programme keeps these risks managed

5.4.1 Raising health and safety concerns

Anyone visiting Stationers Park, including those involved in the parks maintenance and management are encouraged to report any health and safety concerns.

Contact phone, email and web details for the Council appear on all welcome signage, as well as the police emergency and non-emergency numbers.

When people call the council with a concern, these are logged, assessed and assigned to a relevant team/member of staff to deal with and respond to in an appropriate timescale, using the Confirm system.

5.4.2 Friends

Members of the Friends of Stationers Park (see section 7.2) can report issues within the park in the same way as members of the public, but they also have close links with the Parks Project Officer, who they can approach directly.

5.4.3 Risk assessments

The Parks Development Team ensures that prior to any works being undertaken on council land, its consultants, contractors and other organisations prepare for approval all necessary risk assessments and method statements (RAMS) covering all proposed works operations. In addition to the usual operations, the Council requires consultants and contractors to provide specific RAMS covering potentially contaminated land, underground services and other unforeseen underground matters, such as unexploded ordnance, and measures to protect the public during any works. Contractors are further required to undertake CAT scans prior to excavations.

The team ensures that, where excavations are to take place, underground services information is obtained from utility providers and the council's pollution team prepares contaminated land desk studies.

5.4.4 Safety representatives

The parks operations service holds a quarterly Health and Safety Working Group, which is chaired by a council health and safety specialist. It is attended by representatives of operational management, staff from both east and west areas, and trades unions.

These quarterly meetings provide the opportunity to raise issues that have not been fully addressed elsewhere. The group is also a place to discuss health and safety issues and legislation, and their implications on working practices and plays a key role in generating continual improvement in health and safety standards.

5.4.5 Staff reporting

All staff are encouraged to raise health and safety issues with their manager or with the health and safety representative who can raise concerns at the quarterly Health and Safety Working Group.

5.5 Reporting issues with the 'Our Haringey' app

The 'Our Haringey' app makes it quick and easy to report problems when people are out and about in the borough. Once the app has been downloaded to a smartphone, the public can take photos of the problem and send it directly to the team responsible for fixing it using the Confirm system. They will then receive progress updates and will be told when the reported issue has been fixed.

Unlike other 'report it' style apps, 'Our Haringey' asks the user to choose from a list of Haringey specific categories for the problem, which ensures the report goes to the right team, first time so it will be dealt with as quickly as possible.

5.6 Community safety and policing

Parks in Haringey are relatively safe places. Over the whole of 2018 there were 487 reported crime or incidents reported to the police across the parks and open spaces in Haringey.

The most commonly reported crime in Haringey parks is robbery, which accounts for about 30% of all incidents. Almost a third of these happened late at night (between 9pm and 5am). There were over 50 reported thefts and almost 50 cases of possession of cannabis.

Two thirds of crimes were reported in the period April to September when the parks are most heavily used

In Stationers Park there were only two reported crimes in 2018, one of the lowest totals of any local park. Stationers Park accounted for less than one percent of all reported crimes in Haringey parks.

5.7 Extending Neighbourhood Watch into parks

Neighbourhood Watch groups across the borough are encouraged to adopt a local park or green space. Members are encouraged to proactively report issue or concerns they have relating to crime or safety in the park.

Eight neighbourhood watches have adopted Stationers Park. They are:

- Ferme Park Road
- Denton Road
- Mayfield Road
- Nelson Road
- Otway Court
- Ridge Road
- Landrock
- Oakfield

5.8 Designing out crime

It is widely recognised that key factors in ensuring park safety and the perception of safety are to ensure high usage, adequate onsite staffing presence, good maintenance of buildings and infrastructure and a high level of community involvement and 'ownership'. These matters are dealt with in other sections.

Sensitive landscape management can also assist in reducing crime. Assessing accessibility and potential crime spots, known as 'designing out crime' may result in the removal of inappropriate tall shrubs and their replacement with a more suitable low growing species. In other instances entrances may be redesigned, or lighting installed.

Despite the low level of reported crime in the park we are not complacent, and we retain a watching brief for opportunities to further reduce the risk of crime in Stationers Park. For example, at the most recent Spotlight visit some residents raised concerns about anti-social behaviour in the playground at night and asked about the scope for improving lighting.

5.9 Locking the park

Stationers Park has not been locked at night since early 2020.

5.10 Dogs

Dogs and dog walking are a valuable part of the park scene, and dog owners are one of the main daily user groups in Stationers Park. Their collective presence is a key ingredient of green spaces being populated and safe to use, especially at quieter times of the day and year. Dog walkers are often described as ‘eyes and ears’ of a green space.

The southern section of the park has been designated as dog free because this area is where the playgrounds have historically been located.

Despite this dog walkers approaching from the south frequently use these entrances and walk through the park to the area that is designated for dogs (and leave by the same route), rather than walking along the pavement to (or from) the gates further down the road. This has resulted in tensions between dog walkers and – in particular- some parents of children who regularly use the play equipment.

The action plan (section 12) recognises this tension and proposes a review of the dog free policy and the establishment of clear guidelines and enforcement if necessary.

5.10.1 Control of dogs

We recognise that most dog owners are, responsible and respectful to their local community. However, we receive complaints from residents about dog fouling and the behaviour of some dogs (and their owners).

A Public Spaces Protection Order (PSPO) is in place across the borough to control the behaviour of dog owners. The prohibitions have been designed to be as simple as possible, giving clarity and outlining expectations.

Well behaved dogs can be walked or exercised freely off lead in all parks over half a hectare in size. Stationers Park is unusual in having a dog-free area that accounts for over 50% of the area of the park (including the tennis courts in the northern section).

The Public Spaces Protection Order (PSPO) covers five areas of dog control:

- Dog fouling
- Keeping dogs under control
- Putting dogs on a lead if directed to do so
- Keeping dogs out of designated areas (such as playgrounds)
- Limiting to six the number of dogs that one person can bring to the park.

Failure to comply with the requirements of the order can result in a fine or to court if the fine is not paid within a specified timeframe.

The PSPO is in force for three years from October 2020 and is likely to be extended for a further three years. Full details can be found at www.haringey.gov.uk/environment-and-waste/noise-and-animal-control/dog-control-orders#types-of-dog-control-orders

Our policies on dogs and dog controls are currently being reviewed as part of the new Parks and Green Spaces Strategy.

6. Sustainability

6.1 Greenest borough strategy

Haringey's Greenest Borough Strategy was adopted in 2008 in response to growing concerns around climate change.

The Strategy sets out the Council's and its partners' commitment to tackle climate change under seven environmental policies to ensure achievement of their 'green' vision over a ten-year period, and details what the council, its partners and the public can do to contribute to:

- improving the urban environment
- protecting the natural environment
- managing environmental resources efficiently
- leading by example
- encouraging sustainable design and construction
- promoting sustainable travel
- raising awareness and involvement.

The management and maintenance of parks and how they are used relate back to many of the individual targets within the strategy. Where possible these have been instilled in everyday working practices in relation to Stationers Park.

6.2 Pesticide use

The council uses a range of herbicides to control weeds in parks. It remains the most effective in terms of the required resources – with two treatments per year often sufficient to prevent weed growth, as opposed to regular treatment by hand or other means.

Chemicals are stored, handled, used and disposed in accordance with manufacturer/supplier requirements, and a COSHH assessment is prepared for each of the substances used.

Reliance on mechanical methods of weed control (e.g. strimming) is reducing as this has an impact on both the operator and does not address the weed at its roots.

The use of herbicides as a principal form of weed control is increasingly under scrutiny, and the parks department is routinely considering alternatives. This is particularly true of weedkillers containing the component glyphosate. This has received a lot of press coverage subsequent to court cases in the United States, but it remains licensed for use in the UK and Europe.

Officers of the council monitor developments in scientific findings. At this stage, glyphosate appears not to cause harm to humans or any animals larger than micro-organisms.

6.3 Sustainable use of materials

The parks service refrains from the use of non-sustainable peat-based products and challenges nursery suppliers to provide alternative supplies. Where plants are obtained from private nurseries, we request plants grown in a peat free environment.

Our infrastructure procurement policy is to use recycled materials where possible. We aim to acquire recycled plastic benches where possible; or where timber is required, we seek to use those from sustainable sources.

6.4 Recycling

Although some parks have dedicated onsite recycling bins, all waste collected from parks be it from standard waste bins, or recycling bins is taken to the North London Waste Authority (NLWA) depot. Materials that can be recycled are extracted and processed accordingly.

Where possible green waste is recycled on-site; grass cuttings are left on the grass; and hedge cuttings are mulched and placed under the hedge or in other areas of the park.

In autumn when a large amount of green waste is generated, that which cannot be used or composted on site is taken to the NLWA depot for recycling. The resulting compost is then collected for use in the parks.

6.5 Pollution reduction

All new machinery used in parks is required to have low vibration levels and low emissions. Machinery is serviced on a regular basis by our in-house parks workshop, helping to ensure low emission and pollution levels. Vehicles meet current emission requirements, and the fleet will comply with the requirements of the London-wide Ultra Low Emission Zone when that is introduced in October 2021 to include Haringey.

We also aim to reduce vehicle emissions through increasing the amount of on-site composting; and through reducing downtime caused by excessive travelling.

Bonfires are not used for safety reasons as well as health concerns due to the smoke.

6.6 Water efficiency

Drought resistant plants and trees are increasingly being chosen by parks managers to ensure that they survive the drier and warmer months and require less watering during these periods.

7. Community Involvement

7.1 Volunteering in parks

Haringey Council actively supports and encourages volunteering in our parks and green spaces. There are a range of mechanisms to support volunteering and community involvement.

7.1.1 Community Volunteering

The Conservation Volunteers (TCV) are based at Railway Fields, N4. They deliver conservation volunteer days across the borough on behalf of Haringey Council. They also support delivery of training opportunities as well as development of site-specific conservation action plans.

During 2018-19, TCV delivered 155 conservation days across parks in Haringey, involving over 1,200 volunteers. In addition, six training days were provided for volunteers on the following subjects: leadership training, leading guided walks, winter tree identification, environmental education volunteers, wildlife garden design and hedge-laying training.

At Stationers Park, TCV delivered 10 conservation days involving 76 volunteers from the local community. The main activity was the creation of a woodchip pathway and steps. Additional activities involved vegetation clearance and management.

During 2019-20, TCV will be delivering at least two volunteer conservation days at Stationers Park. Additional days may be set aside as the works to reinstate the pond continue.

7.1.2 Corporate volunteering

Haringey Council actively supports companies and corporate volunteers within our parks and green spaces. Corporate volunteering provides an opportunity for employees to be involved in a different experience whilst supporting our management and improvement of green spaces.

During 2018-19, TCV supported 14 corporate volunteer days across the borough with tasks ranging from habitat creation and vegetation management, to creating countryside furniture and nature trails.

Opportunities for corporate volunteer groups are covered within site Conservation Action Plans to ensure that the sessions support wider management of the site whilst providing an engaging and rewarding opportunity for the volunteers.

7.2 Friends of Stationers Park

Friends Groups across the borough do a huge amount of work and put in thousands of hours of volunteer time each year to:

- help develop maintenance and management plans for our parks and green spaces
- raise funds for improvements needed
- prevent inappropriate development in parks and green spaces

- plant trees, shrubs and flowers and help create play areas, seating etc
- conduct regular walkabouts with parks staff and produce maintenance updates
- organise activities that encourage local residents to safely use their local open spaces, including festivals involving up to thousands of local people.

The Friends of Stationers Park (FOSP) is a local volunteer group that seeks to make the best possible use of the park for the whole community. The group has a chair and treasurer that volunteer their time and help coordinate the contributions of other volunteers. Communication across the volunteer group is done via notices posted in the park and via the Friends' Facebook pages.

The Friends can lay claim to a number of successes over the last couple of years include the replacement of the under eights playground, campaigning for the restoration of the pond in the northern end of the park, coordination of repairs for the sporting equipment in the park and organising and holding substantial summer and Christmas events in the park. The Friends also arranges informal gardening sessions where people volunteer their time to maintain and extend the cultivated spaces in the park.

The ambition of the group is to find funding to establish an outdoor gym in the park and to continue to expand the cultivated areas across all areas of the park.

7.3 Haringey Friends of Parks Forum

The borough-wide Haringey Friends of Parks Forum was set up by Friends groups as an independent network in 2002. It is a coalition of over 40 Friends of parks groups and is committed to protecting and improving open space within the borough. The Friends of Parks Forum meets six times a year.

The Forum provides an opportunity for Friends Groups to work together for the benefit of Haringey's green spaces and green space users. The Forum's ['What We Do and How We Do It'](#) document describes the work of the forum and of individual friends' groups.

Amongst other things the Forum has been effective in lobbying and campaigning for

- better planning policies as they affect open spaces
- more ambitious and effective open space standards
- greater levels of on-site staffing
- giving support to individual Friends' groups

Friends Groups communicate and co-ordinate through the Forum's email list. The Friends Groups liaise closely with all council park services and have been key agents in helping to bring in millions of pounds in external funding to improve facilities for local people.

The Forum is supported by the Council and park officers attend a session during the Forum's meetings to take note of each local Friends group's issues, and to discuss wider issues of common concern. The Council is publicly committed to active partnership working with Friends groups and the Forum. Minutes of all Forum meetings are published on the Forum website.

7.4 Hornsey Vale Community Association

The Hornsey Vale Community Association is a registered charity run by members who each year elect a management committee. The association is based in the Hornsey Vale Community Centre that is adjacent to Stationers Park on Mayfield Road. A range of events and activities are held in the community centre including an after-school club which makes use of the nearby park.

In the past the community association has run joint events with the Friends of Stationers Park. These have included firework displays, music and dance festivals and May Day celebrations. The Hornsey Vale Choir organises an annual carol service, now in its fourteenth year, which usually attracts over 200 people. Classes in the centre have used the park for art activities and physical exercise.

The Stationers Park summer festival (see section 3.6) is held in partnership between the community association and the Friends of Stationers Park.

If other community groups are hosting events in the park, the association often allows the facilities in the community centre to be used.

7.5 Weston Park Primary School

The school is immediately to the north of the northern boundary of the park. It is a community primary school for infants and juniors laid out on one floor with disabled access throughout. It encompasses a nursery class within the building. After school activities are held in the community centre and throughout the year the park is also used by the school.

The school makes good use of the park, and the children use it for their weekly tennis lessons, as well as for educational visits to look for wildlife (minibeasts), for art projects and for additional exercise opportunities.

Children from Weston Park, and their families, enjoy spending time in the park after school.

8. Conservation and Heritage

8.1 Biodiversity and the Biodiversity Action Plan (BAP)

The term biodiversity refers to the variety of life around us, including plants, animals and the ecological interactions that take place in our environment. Haringey supports a wide diversity of wildlife and habitats ranging from woodland and wildflower meadows to ponds, streams and wetlands.

Haringey's Biodiversity Action Plan (BAP) is currently under review. During 2020-21 a new BAP will be produced, aligned with the new Parks and Open Spaces Strategy. The new BAP will include detail on priority habitats, development of high value ecological corridors and the integration of biodiversity conservation into wider council initiatives.

Priorities within the BAP will help support updating or developing Conservation Action Plans for parks in Haringey including Stationers Park. See section 8.4.

8.2 Habitat representation and nature conservation interests

Stationers Park covers 1.6ha with a range of habitat types represented. These are set out in the table below:

Habitat type*	Coverage (%)	Coverage (ha)
Amenity grassland	23%	0.37ha
Scattered trees	18%	0.29ha
Bare artificial (inc tennis courts and play)	37%	0.59ha
Shrubbery	7%	0.15ha
Non-native hedging	4%	0.07ha
Dry river bed and pond area	9%	0.14ha

Note: Habitat type defined as per the London Survey Methodology. See www.gigl.org.uk for information.

The lower pond within Stationers Park provides a particularly valuable nature conservation resource. It supports a population of common frog (*Rana temporaria*) and several species of Dragonfly.

Aquatic plants include the flowering rush (*Butomus umbellatus*), a local declining species in and sea club rush (*Bolboschoenus maritimus*). The latter plant is naturally distributed round the coast in salt marshes, tidal river banks and such places. Therefore, it is a very rare plant in Haringey. It was introduced at Stationers when the site was created and its vigorous spread needs regularly control.

The presence of many berry producing trees and shrubs e.g. yellow berried firethorn (*Pyracantha rogersiana* 'Flava') has encouraged a good range of bird species into the park. They include green woodpecker (*Picus viridis*), greenfinch (*Carduelis carduelis*) and grey wagtail (*Motacilla cinerea*).

There are also frequent sightings of grey squirrels (*Sciurus carolinesis*) and foxes (*Vulpes vulpes*).

The reinstatement of the upper pond at Stationers Park will provide many opportunities for enhancing the biodiversity of the site. In addition there are plans for an increase in wildflower areas.

8.3 Designation status

Natural England and Local Authorities have a system of designating greenspace depending on certain characteristics and their value - locally, regionally and nationally. Stationers Park is not designated as a Site of Importance for Nature Conservation (SINC).

There are designated sites close to Stationers Park:

Site	Area (ha)	Location	Designation
Granville Road Spinney	0.30ha	South of site	Local SINC
Stroud Green Railway Bank	2.19ha	East of site	Borough Grade II SINC
Parkland Walk, Queen's Wood and Highgate Wood	67.95ha	South and west of site	Metropolitan SINC

8.4 Conservation Action Plan (CAP)

Conservation Action Plans (CAP) provide a framework for ongoing management of sites for their biodiversity value. They provide guidance on conservation actions and activities that can be carried out throughout the year and form a basis for the conservation work of TCV, Friends groups and other community organisations.

CAPs detail site specific opportunities as well as supporting borough wide conservation efforts and requirements, such as contributing to habitat creation targets or demonstrating the positive management of SINCs.

With the development of a new Biodiversity Action Plan during 2020-21, existing CAPs for parks will be updated to ensure they are aligned with the new BAP. They will detail conservation actions and requirements, including maintenance, enhancement opportunities and potential future projects.

There is a CAP in place for Stationers Park which can be found in Appendix 1. This continues to form the basis for conservation activities within the park and will be updated to reflect new priorities, actions and projects.

8.5 Site history and heritage

Stationers Park is built on the site of the former Stationers School in 1987. The school was originally founded in 1861 near Fleet Street as the Stationers' Company's Foundation School, but in 1891 it moved to the site of what is now Stationers Park. The school closed in 1984. For those with an interest there is a former pupils' [website](#) with several images of the school though very few of the grounds.

In December 2020 the council supported the Old Stationers Association to erect a plaque on the wall of the park in Mayfield Road, to mark the location of the school.

Photograph of the former Stationers School (date unknown)



Map of the former Stationers' School (believed to date from 1925)



9. Marketing and communications

9.1 The marketing approach

The marketing of Stationers Park involves more than simply publicising and promoting the park. It also involves listening to the users of the park. Our main aim is to put the needs and concerns of stakeholders, park users and residents at the centre of business marketing approach.

This section outlines how facilities and activities at Stationers Park are promoted and publicised and how users are positioned at the centre of the business.

9.2 Websites - www.haringey.gov.uk/greenspaces

The Haringey council website contains extensive information on the borough's parks and open spaces, including Stationers Park. Information such as location, facilities and transport links for all Haringey parks and open spaces is available.

Policy information such as the Parks and Open Spaces Strategy which draws upon a range of information and seeks to establish a long- term vision for the borough's parks and open spaces is also available.

Information detailing the Council's partnerships with Friends Groups, The Conservation Volunteers and the Metropolitan Police is available online along with links to their websites.

Detailed information about Green Flag Awards with links to the Green Flag park pages within the Haringey Council site can also be viewed.

9.3 Social media

Social Media is now a regular way of communicating information between relevant parties and beyond. Haringey Council encourages all partners to use social media when communicating with communities.

Haringey Council has a Twitter feed ([@haringeycouncil](https://twitter.com/haringeycouncil)) with around 17,000 followers. It is used to proactively release live information to keep people informed and updated and to respond to queries and complaints posted by others. This is checked throughout the day and provides residents and visitors with another communication channel.

The Council also uses other forms of communication such as Facebook and YouTube.

www.facebook.com/haringeycouncil

www.youtube.com/haringeycouncil

We also like to keep our residents informed about the events that are taking place, and regularly ask that stakeholders and park hirers submit details about their event on the Council website on our "What's On" listings section at www.haringey.gov.uk/add-event. There is no charge for this service.

The Friends of Stationers Park have a Facebook presence which is used to communicate information about events and activities. It can be found by searching for 'Stationers Park' on Facebook.

The Stationers Park café has its own Facebook presence which can be found by searching for 'Stationers Park café'. This page is regularly updated with information about produce for sale and any weather-related changes to opening hours etc.

9.4 Publications

Haringey People is the Council magazine, distributed six times a year by direct mail to all households within the borough. The magazine is produced by the Council's Central Communications Team which has editorial control over the content.

<https://www.haringey.gov.uk/news-and-events/haringey-people-magazine>

Several articles are published each year promoting the borough's parks as well as the work and events that key stakeholders and partners organise in parks throughout the year.

9.5 Notice boards

There is a notice board located in the northern section of Stationers Park, close to the café. This is used to display information about the Friends and council services, campaigns and events.

In 2014 the council issues a set of guidelines detailing how notice boards within parks should be used, maintained and what information can be displayed were issued with the expectation that all those with an interest and access to the notice boards will adhere to them.

In 2019 we developed a simple A3, updateable poster that gives key contact information for council and other public services. This is present in the Stationers Park noticeboard.

9.6 Campaigns

Haringey Council supports and promotes several national campaigns via social media to highlight key issues affecting the borough's parks and open spaces. These include:

- Litter awareness campaign – encouraging users to dispose of their litter responsibly
- Neighbourhood Watches – encouraging creation of new watches and increased membership
- Trees Awareness – aimed at highlighting tree planting, tree identification, maintenance and removal and why. National Tree Week is also supported
- Volunteering and Friends Groups – promoting the work groups do, the benefits they bring to communities and encouraging volunteering
- Love Parks Week – Encouraging stakeholders and Friends to promote and highlight the borough's parks and the events that they put on
- The Big Lunch - supporting and promoting via social media the Big Lunch events happening across the borough, with focus on shared picnics in our parks and green spaces

- The Great Get Together - supporting and promoting the national campaign to celebrate and promote community cohesion. We have streamlined the application form for this event to make it even easier for residents and park users to take part.
- Play Weekend - supporting the Play Streets initiative to encourage more active play within communities
- Playday - supporting the National Summer event to promote active play for children, young people and families. We work closely with our colleagues in the Active Communities Team to support community involvement and uptake.

9.7 Awards

In 2018-19 a total of 22 parks managed by Haringey Council were awarded Green Flag status, an external recognition for quality parks and open spaces. Stationers Park was one of these.

A successful re-inspection of Stationers Park took place in the autumn of 2019. All 22 of the parks managed by Haringey Council have retained their green flag status.

9.8 Tree and bench sponsorship

A sponsorship scheme is provided where members of the public can sponsor the planting of a tree or the installation of a bench in any council run park and open space. This can be done to commemorate a loved one or an event.

The sponsor pays for the item and planting / installation, thereafter the council maintains it subject to certain conditions. Should sponsors wish to, they can also help in maintaining their item.

9.9 Consultation and market research

Haringey is committed to listening to the views and ideas of our stakeholders, park users and residents. Council officers attend the Friends of Parks Forum on a bi-monthly basis and maintain open channels of communication with key stakeholders. This is a good way to listen to concerns and engage in a constructive dialogue about individual parks.

When planning any new project work within parks, we make sure that key stakeholders are included in discussions from the beginning of the process and where possible hold open engagement sessions so we can listen to the thoughts, needs and concerns of the wider park community.

Budget cuts have hit our capacity to undertake regular surveys of park users. We include a question about satisfaction with parks in a borough-wide survey about environmental and waste services. The survey is commissioned by Veolia.

In 2018, four in five respondents to the survey (80%) said that they were satisfied or very satisfied with parks. This is slightly down from 2016 (81%) but in 2018 parks was the service in this survey with the highest satisfaction rating.

10. Management

10.1 Setting the financial scene

The parks service gross budget for 2017/18 was a total of £5.1m with a revenue income of £4.5m and operated a net deficit of £600k. According to a survey by Parks for London this represents the second lowest operating deficit in London.

Whilst the service has borne its share of austerity related budget reductions, in recent years the service has chosen to focus on generating additional income to mitigate these reductions rather than impact service delivery on the ground. The service has managed this by growing the amount of income generated through: -

- Increasing the number of park properties let
- Increasing the number paying a market rent,
- Growing the number of commercial events
- Growing the level of filming income
- Increasing the range of services offered to other organisations

A breakdown of the 2017/18 revenue budget is set out below: -

a) Revenue Expenditure – Employees, Premises, Transport, Supplies and Services, Third Party Payments, Support Services etc

a. Total Parks expenditure	£5,142,184
b. Employees	£2,665,995
c. Premises related expenditure	£534,054
d. Transport related expenditure	£144,885
e. Supplies and Services	£398,471
f. Third Party Payments	£662,463
g. Support Services	£583,987
h. Capital Charges	£152,330

b) Revenue Income - Customer and Client Receipts, Recharges etc

a. Total Revenue Income	£4,467,442
b. Customer and Client Receipts	£3,753,447
c. Recharges	£713,995

The council seeks to secure external investment from a number of sources. The council has its own ten-year capital strategy which currently includes over £11m of capital funding for parks. The service seeks to add to this sum and has secured further investment from the following sources over recent years:

- Section 106
- Community Infrastructure Levy
- National Lottery
- London Marathon Charitable Trust
- Environmental Funds
- Greater London Council
- Event Income

Another important part of the overall funding mix is the fundraising carried out by Friends Groups across the borough. A wide variety of groups have been able to secure funds to deliver the priorities they identified. In 2017/18 the council directly invested the following amounts: -

c) Capital Expenditure – names of Capital schemes and expenditure on each scheme.

a. Park Asset Management	£377,288
b. Active Life in Parks	£263,477
c. Parkland Walk Bridges	£126,780

The Council continues to face significant financial challenges with many millions of pounds of savings to find over the coming years. A goal therefore for the service over the coming years is to maintain a stable budget position and therefore continuing with a strategy to generate additional income will be an important financial focus for the service.

10.2 Management structure

The Parks Service sits within the Environment and Neighbourhoods Directorate and is overseen by the Director and the Cabinet Member for Environment.

The service is organised across Commissioning and Client Services and Operations business units.

Responsibility for the service falls to the respective heads of each business unit and they are supported by two commissioning managers and a parks manager.

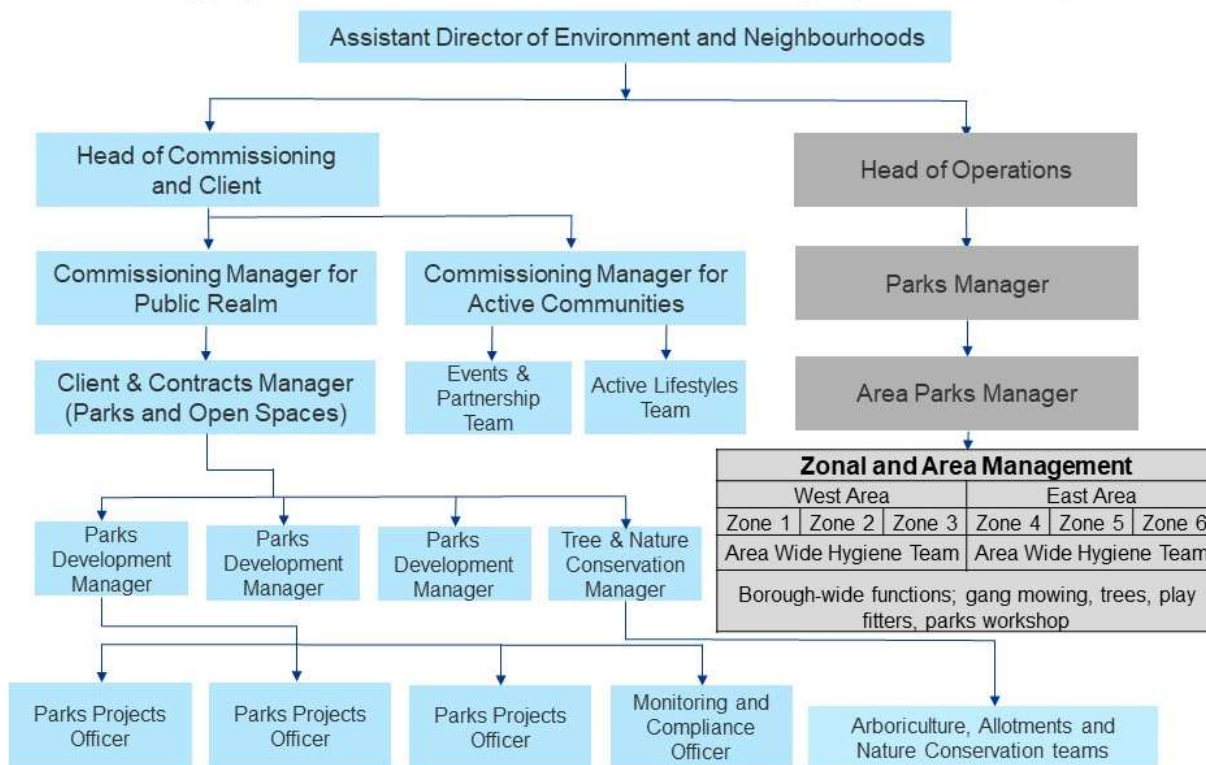
The structure chart (overleaf) shows the three core strands of the parks service, which are:

- Park Operations Team – this team takes the lead on all day to day operational aspects of maintaining each green flag park.
- Active Communities Team – this team takes the lead on all event management, community activation in the park, partnership working and small grant awards. This team also secures sport related external funding
- Public Realm Team – this team takes the lead on asset management, investment in parks, policy development, nature conservation and arboriculture.

These three core teams are supported internally by colleagues across Community Safety and Enforcement, Planning Services, Regeneration, Adults and Children's services on a variety of issues from homelessness, to new cycle routes, to improvement in existing green spaces and access and activities for older and young people.

External support for the service comes through the Friends Forum, our partners within the Police and The Conservation Volunteers alongside organisations such as Parks for London, Keep Britain Tidy and APSE.

Haringey park structure chart (April 2019)



10.3 Borough Plan 2019-2023

Following the local elections in May 2018 the new council and its partners have developed a Borough Plan setting out their vision and priorities for the next four years. Following extensive public consultation, it was agreed by Cabinet in February 2019.

The plan sets out the council’s priorities and the outcomes it seeks to achieve. Outcome 10 of the plan is for “a healthier, active and greener place”. The plan places importance on the role of parks and open spaces in delivering this outcome through four objectives.

Objective 10a is to “Protect and improve parks, open space, and green space, promoting community use”.

The Plan identifies several ways in which this will be achieved:

- Continue with partners to invest in our parks with over £15 million of improvements planned over the next five years, including new playgrounds and sports facilities
- Develop a new Parks and Open Spaces strategy and consult with partners and local communities about how we will work together to protect, enhance and, where possible, extend green and open space in Haringey
- Promote the use of our parks for a wide range of events and activities, including more community use
- Plant more trees to make our streets and open spaces greener
- Work with partners, including environmental community groups, to maintain the borough’s watercourses, maximising their environmental and health benefits.

Parks are also important in delivering Objective 10b of the plan. It is to “increase the levels of physical activity across the borough” by “creating healthier places, including parks and open spaces, in line with the Mayor of London’s Healthy Streets plan...”

However, we cannot achieve the priorities in the plan on our own. We trust that our partners locally and our residents will work together with us on achieving them.

The Borough Plan 2019-2023 can be found at:

https://www.haringey.gov.uk/sites/haringeygovuk/files/borough_plan_2019-23.pdf

10.4 Parks and Open Spaces Strategy

The last open space strategy was adopted in 2006.

Work has begun on developing a new strategy for parks and open spaces. The importance of a new parks and open spaces strategy is underlined by the explicit reference to it in Borough Plan 2019-2023.

The new strategy will build on the Parks Scrutiny Review that took place in March 2018. It will be co-produced with Friends, residents and councillors. As part of the process there will be a series of workshops and a period of public consultation.

The strategy will set out the ambitions for the service over the next 15 years. It will set out approaches to the maintenance, management and usage of parks. It will also set out clear policy positions on issues relating to parks and open spaces. In some cases new policies will need to be developed (such as security in parks and licensable activity).

The strategy will also describe the funding landscape. One key element of this will be to balancing revenue funding for the service against the agreed service standards. It will also provide a context to inform the long-term capital strategy including mapping out the external funding opportunities that can be used to the benefit of the service

The timetable is for a draft 15-year strategy to have been agreed, following public consultation in June 2021 and for Cabinet to agree the document in February 2022.

10.5 The Greenest Borough Strategy

Haringey’s Greenest Borough Strategy responds to growing concerns around climate change. The Strategy sets out the Council’s and its partners’ commitment to tackle climate change under a number of key environmental policies to ensure achievement of their ‘green’ vision over a ten-year period, and details what the council, its partners and the public can do to contribute.

More information can be found here: www.haringey.gov.uk/greenest-borough

10.6 The Health & Wellbeing Strategy

This strategy aims to reduce health inequalities through working with communities and residents to improve opportunities for adults and children to enjoy a healthy, safe and fulfilling life, through several key outcomes.

Those that specifically relate to parks include increasing physical activity and improving health and mental wellbeing.

More information can be found here: www.haringey.gov.uk/hwbstrategy

10.7 Finance and funding

The revenue budget for Stationers Park sits within the overall Parks Operations budget.

Capital expenditure on parks and open spaces is planned at a borough level rather than at an individual park level. Match funding and other sources of external funding are sought to fund capital projects wherever possible.

10.7.1 Parks and open spaces Small Grant Scheme

The Parks and Open Space Small Grant Scheme has been running for several years. The scheme offers community groups associated with parks and open spaces - such as Friends of Parks groups – to bid for funding of up to £1000. The funding is to support and develop community activity to help meet the council's aims and priorities for improving the borough's parks and open spaces. The budget available in 2020-21 was £40,000.

More information can be found here: www.haringey.gov.uk/parkssmallgrants

10.7.2 Events income

At the end of 2013 a review of the parks events policy was conducted to inform and guide changes of how events would take place in the borough's parks. It was also to realign and invest income from parks events back into park improvements. In January 2014 the Council adopted the [Outdoor Events Policy](#), and each year the [Events Fees and Charges](#) are reviewed to ensure they align with council policy and are comparative and competitive with other similar parks in London.

Income generated from all events in parks and open spaces is used within the park the event took place. In the first instance this will pay towards the management and maintenance of the park. Where significant sums of money are generated from events, this will be reinvested back into the park where the event took place.

All applicants who hold events are charged a fee based on the events fees and charges structure that is agreed by the Council each year. The structure of charges differs from the type of event (ie community, charity or commercial) and by the size of the event proposed.

The environmental impact fee will be kept separate from other income received in respect of events. This additional income can be used by the Friends of the park in which the event was held to address their immediate priorities for the park.

11. Improving Stationers Park

11.1 Next steps

Section 12 contains an action plan has been drawn up that sets out the actions to be taken over the next three years.

Next year it will be important to secure community involvement in the management and maintenance of the new pond to ensure it becomes established and attractive to wildlife. It is also hoped that funding can be secured to refurbish the tennis courts and – also subject to securing funding – that the installation of an outdoor gym will encourage park users to improve their fitness. The park will continue to be a hub for a wide range of community activities subject to Covid-19 restrictions. It is hoped that another summer festival will be held in 2021.

11.2 Summary

Stationers Park is a small park in a densely populated area of the borough. It was created just over 30 years ago, but it has been a victim of the budget cuts and austerity of the last decade. Nevertheless the park has seen investment in recent times including , most recently, the new under 8s playground in the southern section of the park.

The Friends and the local community have always been actively involved in the park and it is hoped – and expected – that this will continue to be the case. There is still plenty of ambition for improving the park. This is reflected in the action plan.

12. Action Plan

12.1 Maintenance and scheduled work programme

This is a schedule of annual or routine tasks which are neither developmental nor fall within the remit of routine grounds maintenance or hygiene functions.

Heading	Action	Frequency	Responsible	When?
Clean and well maintained	Site inspection to be undertaken	Quarterly	Park Projects Officer	Jan/Apr/Jul/Oct
Healthy, safe and secure	Play Inspection Company to inspect and risk assess all play and outdoor gym equipment	Quarterly	Play Inspection Company	Jan/Apr/Jul/Oct
Management	Review the Park Management Plan annually	Annually	Park Projects Officer	Dec/Jan
Community Involvement	Lead 'Spotlight' meetings in the park with councillors and Friends	Quarterly	Park Projects Officer	Quarterly Jan/Apr/Jul/Oct

12.2 Stationers Park development plan

This plan (overleaf) describes the work we would like to carry out. Budget availability and more urgent unplanned work may mean that it cannot all be fulfilled. Other repairs and general maintenance may have to take precedence. The content of this plan will be reviewed at least annually towards the end of each calendar year.

This plan shows the activities and work we would like to carry out.

Heading	Action	Priority	Responsible	Approx cost	Funding source	Deadline
Key:	PPO=Parks Project Officer; add other abbreviations here					
A welcoming place	Improve information for visitors about what's in the park (including information about flora and fauna)	M	PPO Friends		External funding bids	August 2021
	Develop a plan for re-developing the largely unused southern-most end of the park.	M	Friends PPO	Nil	n/a	August 2021
	Create area for teenagers subject to the above consultation	L	Friends PPO	TBC	External funding bids	Tbc
	Review policy of the southern section of the park being dog-free in conjunction with park users. Establish clear guidelines and enforcement if necessary.	H	PPO	Nil	n/a	August 2021
A clean and well-maintained park	Install a viewing platform overlooking the pond to enable people to view wildlife	H	PPO	£1-5k	Council	June 2021
	Establish a permanent water source for topping up the pond in summer	M	PPO	Unknown	External funding?	Mar 2022
	Repair main path where cracked	M	PPO	£5-10	Council	Partly completed
	Install a dual-use recycling and waste bin near the cafe	M	PPO	Under £1k	Council	Dec 2021
	Repair or replace broken and defective waste bins and locate or	H	PPO	£1k-5	Council	June 2021

Heading	Action	Priority	Responsible	Approx cost	Funding source	Deadline
	relocate bins to places of greatest need					
	Remove remaining dog waste bins (bagged dog waste can be placed in any bin)	M	PPO	Under £1k	n/a	Partially complete
	Planting and maintaining identified beds with Friends	H	Friends TCV Operations	Nil	n/a	Ongoing
	Repair and repaint plinth to sundial and clean sundial to remove tarnished surface	L	PPO	nil	Volunteers	Dec 2021
	Repaint fences and gates where required (ideally with volunteers or Community Payback etc)	L	PPO	Under £1k	To be identified	Dec 2021
	Replace brickwork on inside of MUGA walls	L	PPO	Under £1k	Council	Mar 2022
	Remove stakes and cages from trees that no longer need them	M	Tree Officer Friends	Nil	Volunteers	Partially completed
Healthy, safe and secure	Agree preferred location and specification for an outdoor gym	M	PPO Friends	Nil	n/a	August 2021
	Secure funding for an outdoor gym	M	Friends	Nil	n/a	December 2021
	Install outdoor gym (subject to securing funding)	M	PPO	£25k	External	March 2022
	Refurbish tennis courts	M	PPO	£50k+	Subject to funding	March 2022

Heading	Action	Priority	Responsible	Approx cost	Funding source	Deadline
	Review and improve the fencing around the upper pond	M	PPO	£1-5k	Council	June 2021
	Review condition of all paths and draw up prioritised list of repairs.	M	PPO	tbc	Council	June 2021
	Replenish wood chippings on western perimeter path and review long term maintenance/management of this path	M	PPO Friends TCV	Nil	n/a	June 2021
A sustainable place	Identify ways of increasing recycling and reducing waste within the park (including working with café)	M	PPO, Park Operations, Friends Cafe	Nil	n/a	May 2021
	Reduce (or eliminate) use of weed killer in the park	M	Park Operations	Nil	n/a	Sept 2021
	Encourage park users to pick up litter and bin it as they use the park.	M	PPO Friends	Nil	n/a	Ongoing
Community Involvement	Re-establish regular scheduled meetings of the Friends groups with an agreed constitution and governance	H	Friends	Nil	n/a	Apr 2021
	Develop and deliver a community-led programme of maintenance and care of the upper pond	H	PPO Friends	Under £1k	Council Friends Fundraising	June 2021
	Hold a summer festival in 2021 (subject to Covid-19 situation)	H	Friends HVCC	Nil	Self-funding	June 2021
	Support and encourage local community organisations to hold	M	PPO, Friends, Events Team	Nil	n/a	June 2021

Heading	Action	Priority	Responsible	Approx cost	Funding source	Deadline
	events in the park (subject to Covid-19 situation)					
	Regular Friends-led working groups and activities to maintain and improve the amenities within the park	M	Friends	Nil	n/a	Ongoing
	Explore scope for increasing use of the park by local schools	L	PPO	Nil	n/a	June 2021
Conservation and Heritage	Friends and community organisations to continue to maintain and manage the lower pond	H	Friends	Nil	n/a	ongoing
	Update the Conservation Action Plan for Stationers Park	H	Nature Conservation Officer (NCO)	Nil	n/a	2022
	Work with community organisations to develop and implement ideas for improving and promoting biodiversity in the park	M	Nature Conservation Officer Friends TCV etc	Nil	n/a	June 2021
	Establish areas of wildflowers and/or meadow – areas to be identified	M	Friends Operations PPO TCV	Under £1k	External funding	June 2021
	Install bird and bat boxes	M	NCO/Friends	Under £1k	External funding	Mar 2022
	Undertake survey of wildlife in the park	L	NCO/Friends	Nil	n/a	Mar 2022

Heading	Action	Priority	Responsible	Approx cost	Funding source	Deadline
Marketing and communication	Improve appearance, content and relevance of information posted on the noticeboard	M	Friends, PPO	Nil	n/a	Ongoing
	Install information boards about the flora and fauna found in the park	L	Friends/Nature Conservation Officer	£500	tbc	Dec 2021
	Discourage people from throwing things into the ponds and explain why it damages the water quality and the wildlife that lives there.	H	Friends	Nil	n/a	Apr 2021
Management	Borough wide parks and open spaces plan to be adopted	H	SF	Nil	n/a	TBC
	Map all park assets on the council's CONFIRM database	H	PPO	Nil	n/a	Mar 2021

APPENDIX 1:



Conservation Management Plan

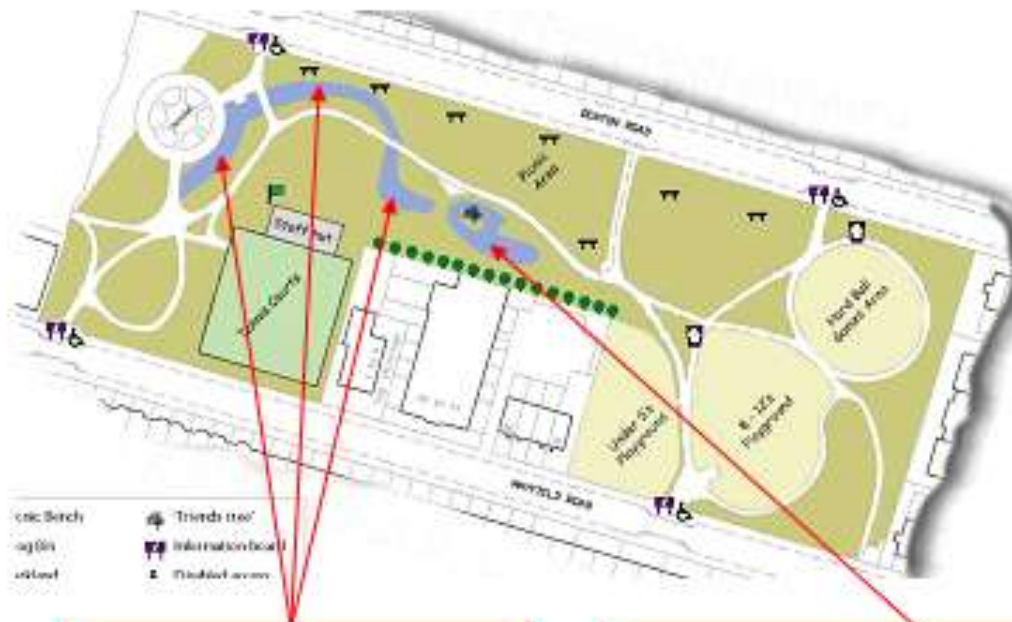
Stationers Park

Reclaiming green spaces since 1959

The Conservation Volunteers (TCV) is a trading name of BTCV
Registered in England as a company limited by guarantee (976410)
and as a charity in England (261009) and Scotland (SC039302).
Registered Office: Sedum House, Mallard Way, Doncaster DN4 8DB



Wetland Habitats



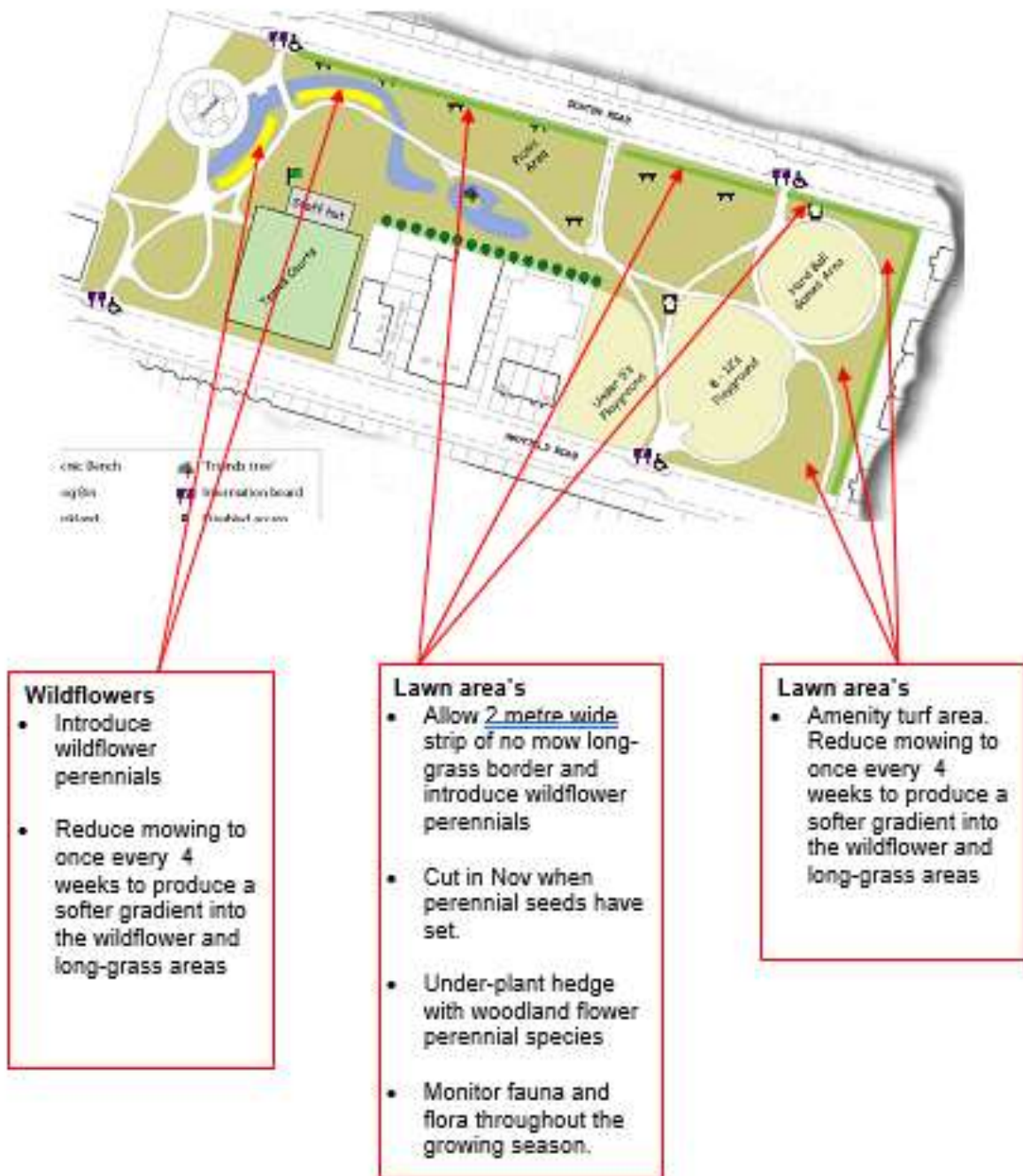
Waterway Ponds

- Monitor and record frogspawn, ~~toadspawn~~ and adult amphibians in the pond. February /May
- Monitor and record Dragonfly and other species and aquatic visitors. Jun/Sept
- Monitor the amount of free-floating and floating-leaved rooted plants covering the pond. Remove excessive growth in June/Aug.
- Remove any rubbish from the pond as soon it is noticed
- Control the spread and density of both the flowering and club rushes and the common ~~reedmace~~ Nov/Jan. Leave the dead stems and leaves of other the marginal's over winter
- Rake off floating Autumn leaf fall and remove some of those that settle on the bottom. Nov onwards
- Accumulated silt should be dug out, clearing only a part of the pond in a season. Nov/Jan

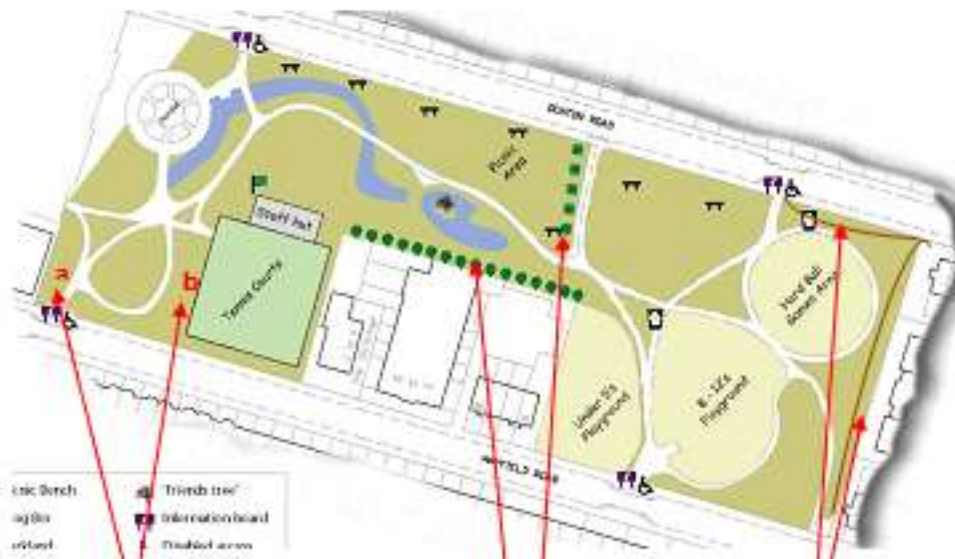
Pond

- Monitor and record frogspawn, ~~toadspawn~~ and adult amphibians in the pond. February /May
- Monitor and record Dragonfly and other species and aquatic visitors. June/Sept
- Monitor the amount of free-floating and floating-leaved rooted plants covering the pond. Remove excessive growth in June/Aug.
- Remove any rubbish from the pond as soon it is noticed
- Clear marginal plants spreading into the centre of the pond from its 'invading front', on the inner side of the margin. This leaves the landward side as undisturbed habitat. Nov/Jan. Leave the dead stems and leaves of other the marginal's over winter.
- Rake off floating Autumn leaf fall and remove some of those that settle on the bottom. Nov onwards
- Accumulated silt should be dug out, clearing only a part of the pond in a season. Nov/Jan

Grassland Habitats



Woodland Habitats



Trees & Shrubs wildlife friendly shrubbery (a)

- Monitor fauna and flora throughout the growing season.
- Trim shrubs back from path. Nov-March. (Some early flowering species will need cutting back after flowering to encourage next year's growth. Allow late flowering plants to seed/fruit for winter feed.

Trees & Shrubs wildlife friendly shrubbery (b)

- Monitor fauna and flora and fungi throughout the growing year
- Leave autumn leaf fall on the bed as habitat for overwintering mini beasts, and food source for birds
- Construct a small Stag Beetle ~~logger~~

Trees & Shrubs

- Under-plant tree/shrubs with woodland flower perennial species
- Monitor fauna and flora throughout the growing season.
- Trim shrubs back from path. Nov-March. (Some early flowering species will need cutting back after flowering to encourage next year's growth. Allow late flowering plants to seed/fruit for winter feed.
- Check, repair and clean ~~birdbox's~~ in February and monitor until Summer

Trees & Shrubs

- Under-plant tree/shrubs with summer flowering perennial species
- Plant a native species hedge along the length of the brick walls. Hawthorn, Blackthorn, Gelder Rose, Dogwood, Dog Rose and Holy
- Monitor fauna and flora throughout the growing season.
- Trim shrubs back from path. Nov-March. (Some early flowering species will need cutting back after flowering to encourage next year's growth. Allow late flowering plants to seed/fruit for winter feed.
- Construct a Stag Beetle logger and wood piles



Grassland Habitats Management Timeline							
Activity	Introduce wildflower perennials	Reduce mowing to once every 4 weeks	Cut and rake off Long grass strips	Under plant hedge with wildflower perennials species	Monitor and record fauna and flora	Mow amenity grass areas	Mow grass paths
January							
February							
March							
April							
May							
June							
July							
August							
September							
October							
November							
December							



Woodland Habitats Management Timeline								
Activity	Monitor fauna, flora, fungi	Trim shrubs back from path	Leave autumn leaf fall on the bed	Construct a small Stag Beetle logger and wood piles	Under-plant tree/shrubs flower perennials species	Check and monitor birdbox' s	Repair and clean birdbox' s	Plant a native species hedge along the length of the brick walls
January								
February								
March								
April								
May								
June								
July								
August								
September								
October								
November								
December								

Waterways Ponds and Pond Management Timeline								
Activity	Monitor frogspawn, toadspawn, adult amphibians	Monitor Dragonfly and other species and aquatic visitors	Monitor the amount of free-floating and floating-leaved rooted plants covering the pond. Remove excessive growth	Remove any rubbish from the pond as soon it is noticed	Control the spread and density of plants. Clear marginal plants spreading into the centre of the pond	Leave the dead stems and leaves of other the marginal' s over winter	Rake off floating Autumn leaf fall, and remove some of those that settle on the bottom.	Accumulated silt should be dug out
January								
February								
March								
April								
May								
June								
July								
August								
September								
October								
November								
December								