

Improving Tottenham Hale

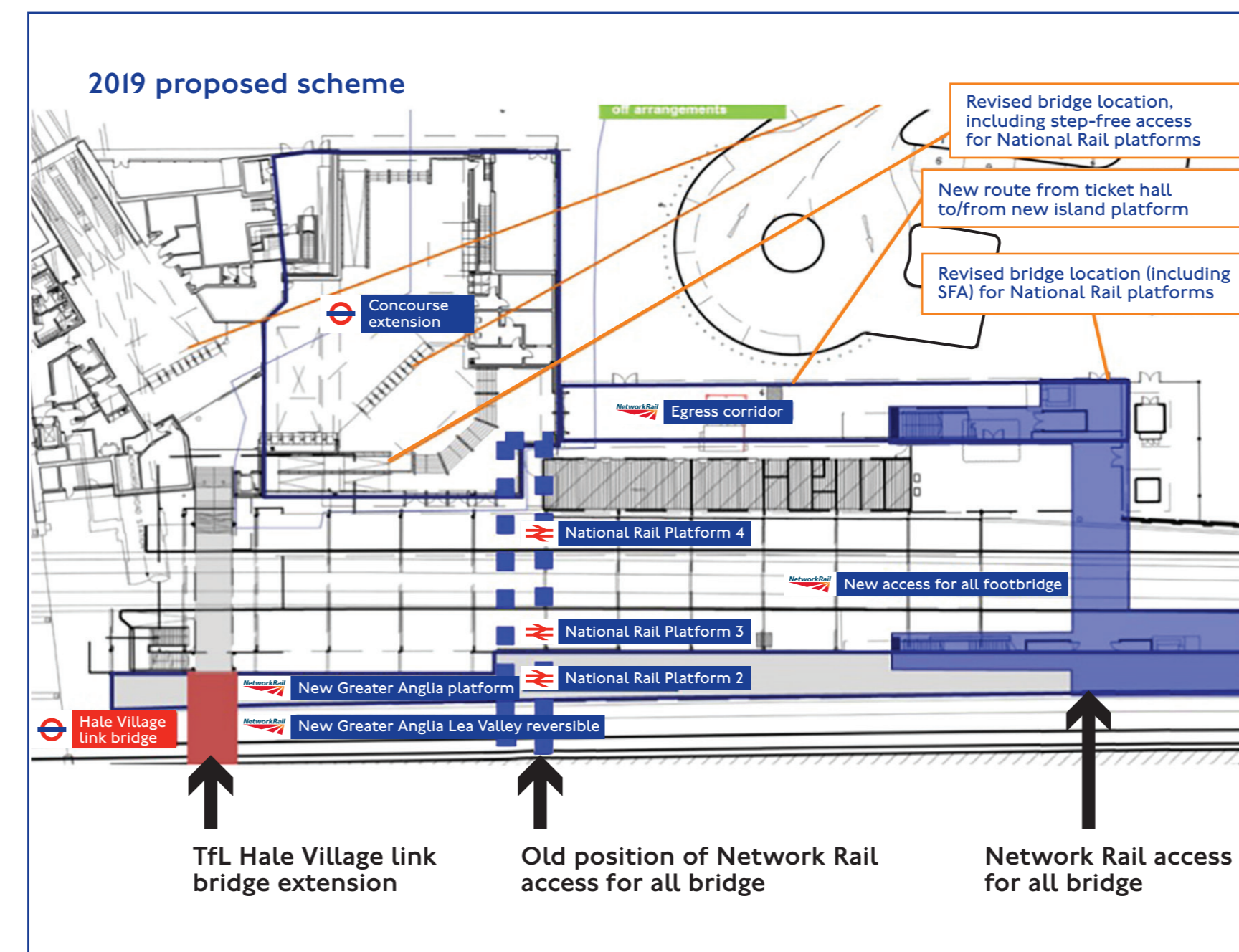
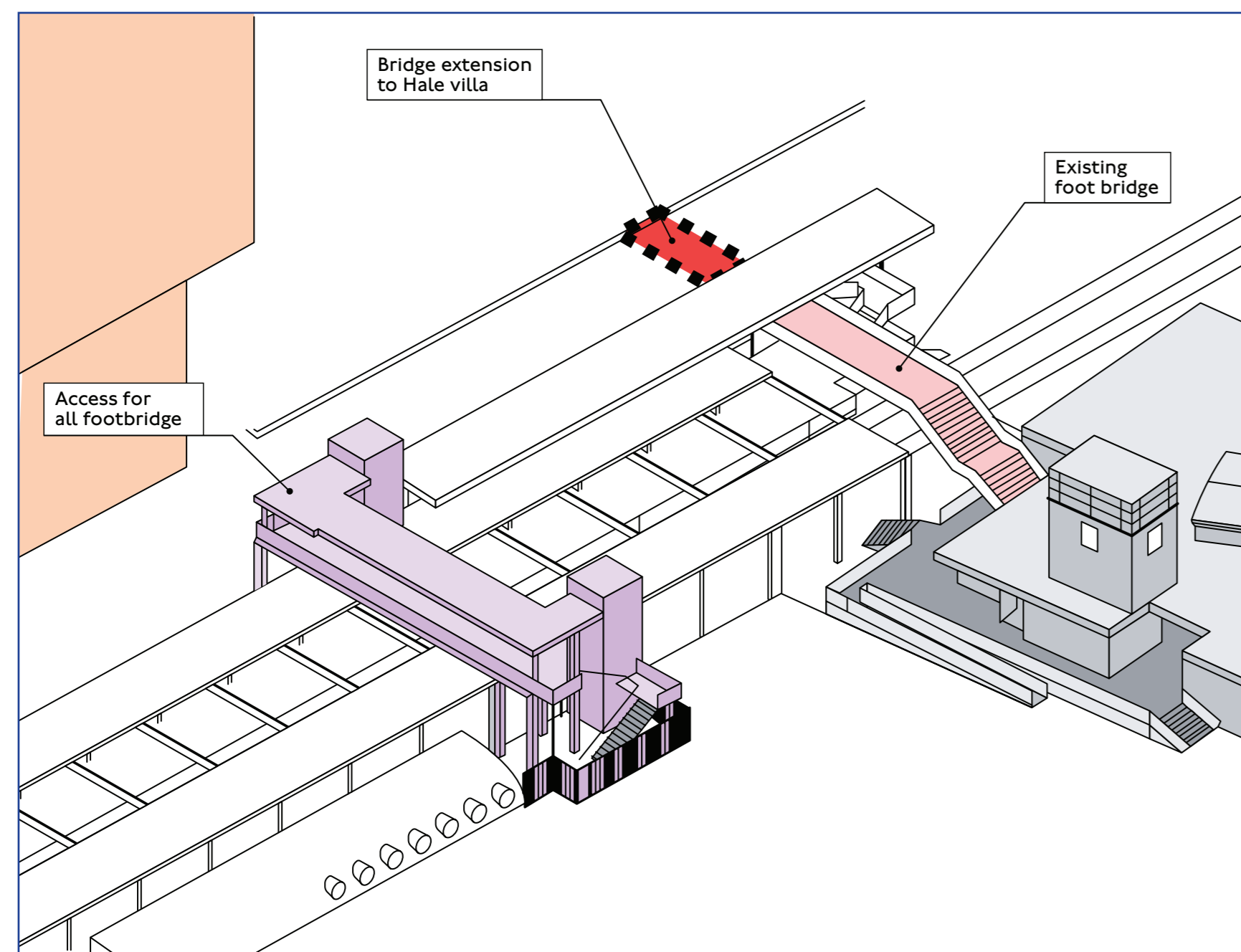
The area around Tottenham Hale station is changing, with local developments seeing more people moving through the area and more demand on public transport. We have worked closely with our partners and local communities to improve accessibility and connections at the station.

As part of these improvements, we designed plans for a link bridge from the station to Hale Village. These plans were approved, however the situation has changed and there have been several factors that mean a bridge is no longer deliverable.

Our new proposal

Following extensive work and consultation, we believe the best approach for this project is to improve the Ferry Lane Bridge and deliver other accessibility and safety improvements in the area.

The scheme would also benefit more residents, with a new pedestrian crossing over Ferry Lane and safer cycling options through segregated cycle lanes and a bus stop bypass. There will also be wider footpaths, better street lighting and improved CCTV.



2013
when our original plans were submitted

2019
when elements of the planning permission were revised by Network Rail

18
different alternatives for the link bridge were explored



Network Rail proposed relocating the original access for all bridge



Regulation changes around the height of the original bridge



Increased number of passengers expected on Greater Anglia services

Accessibility

The new scheme must provide east-west access on the northern side of Ferry Lane. The subway closure reduced access for residents of the Ferry Lane Estate.

Cost

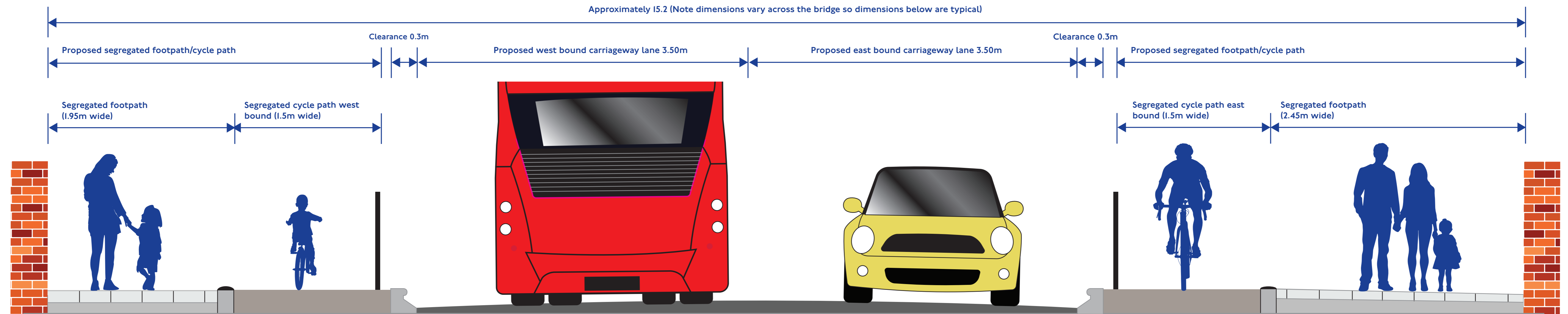
The Hale Village link bridge was no longer affordable, so the new alternative must fall within a feasible budget.

Build and operate

The area around the station is constrained by railway, roads and developed land. There are also security considerations around access to the station.

Proposed highway improvements

Ferry Lane / Proposed cross section



Converting the nearside general traffic lane

This will improve safety for people cycling through the junction



Community safety

CCTV to be installed in accordance with council standards



Street art

These will also help pedestrians navigate around the station



Wider footways

Giving more space for pedestrians and a segregated cycle space



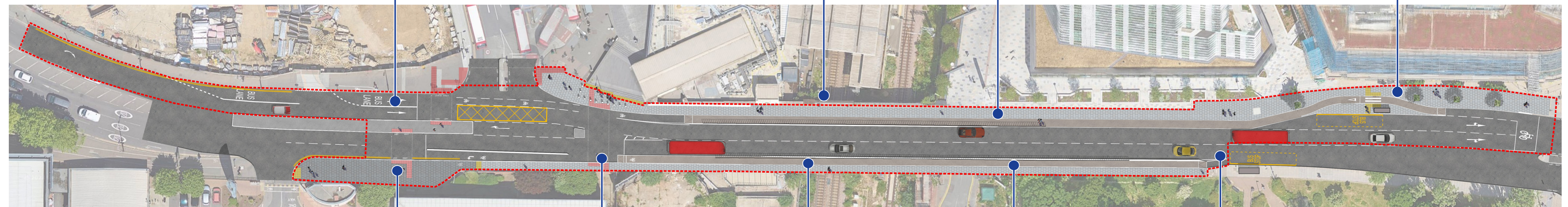
Improving street light

This will give consistent lighting and improve safety



Bus stop bypass

This will improve cycle safety at this junction



Upgrading the crossing

The toucan crossing will make it safer for people cycling to cross Ferry Lane



New pedestrian crossing

This will improve safety where people already try to cross



Repaved footways and cycleways

This includes clear demarcation between the two spaces



Cleaning the bridges and parapets

This will improve the visual appearance of the area



Segregating cycles

We will move the cycles onto the other side of the barriers

MAYOR OF LONDON



TRANSPORT FOR LONDON

EVERY JOURNEY MATTERS