

What is a Detention and Training Order?

Haringey Youth Justice Service (YJS)



What is a Detention and Training Order?

- A DTO can be given to you when you have committed an offence (done something that is against the law).
- You will be taken back into the court cells and taken to either a Young Offenders Institution (YOI), Secure Training Centre (STC), Or Secure Children's Home (SCH).
- This means that after you're sentenced, you will not be able to go home for a period of time and will go to prison.



How long does it last for?

- A DTO can last up to 2 years.
- Most of the time, half of this sentence is spent in prison and the other half spent in the community on what is called a "licence".
- You will have certain conditions which will be explained to you by the YJS worker.



What are the rules?

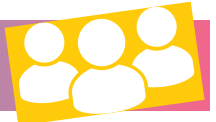
- ✓ Follow the rules in your DTO plan
- ✓ Go to all of your sessions, unless you have a good reason and be on time
- ✓ Tell us if you change your address or phone number
- ✓ Keep to all your licence conditions
- ✗ You must not have any drugs or alcohol before your appointments
- ✗ You must not bring any friends to your appointments

What can it include?



- The prison will decide what activities you need to do to help you stop offending.
- Whilst in prison you will be expected to take part in certain programmes and education daily.
- When you are released from custody, your licence will have conditions which can include being supervised (managed).
- A YJS worker will support you throughout your sentence and attend all your review meetings (in person and virtually).

Who is involved?



- You will meet with a case worker from the prison and they will work with the YJS worker.
- The YJS case worker will also speak and include your parent/carer in your review meetings and plans.
- We're all here to help you stay out of trouble and how best to support you when you return back into the community.

Where do I need to go?



- When you are on licence, your meetings will usually take place at 38 Station Road, Wood Green, N22 7BF, or at another centre in the community.
- Your YJS worker will let you know where. You need to let your case manager know where you feel safe.